

Product datasheet

Recombinant Human KCNK5/TASK2 protein ab160135

[1 Image](#)

Description

Product name	Recombinant Human KCNK5/TASK2 protein
Expression system	Wheat germ
Protein length	Full length protein
Animal free	No
Nature	Recombinant
Species	Human
Sequence	<pre>MVDRGPLLTSIIIFYLAIGAAIFEVLEEPHWKEAKKNYYTQK LHLLKEFP CLGQEGLDKILEVVS DAAGQGVAITGNQTFNNWNWPNAM IFAATVITTIG YGNVAPKTPAGRLFCVFYGLFGVPLCLTWISALGKFFGGR AKRLGQFLTK RGVSLRKAQITCTVIFM/WGVLVHLVIPPFVFMVTEGWNYE GLYSFIT ISTIGFGDFVAGVNPSANYHALYRYFVELWYLGAWLSLFV NWKVSMFV EVHKAIKRRRRRKRKESFESSPHSRKALQVKGSTASKDVNI FSFLSKKEET YNDLIKQIGKKAMKTSGGGETGPGPGLGPQGGGLPALPP SLVPLVVYSKN RVPTLEEVSQTLRSKGHVSRSPPDEEAVARAPEDSSPAPE VFMNQLDRISE ECEPWDAQDYHPLIFQDASITFVNTEAGLSDEETSKSSLE DNLAGEESPQ QGAEAKAPLNMGEFPSSSESTFTSTESELSVPYEQLMNE YNKANSPKGT</pre>
Amino acids	1 to 499
Tags	GST tag N-Terminus

Specifications

Our **Abpromise guarantee** covers the use of **ab160135** in the following tested applications.

The application notes include recommended starting dilutions; optimal dilutions/concentrations should be determined by the end user.

Applications	Western blot ELISA
Form	Liquid
Additional notes	This product was previously labelled as KCNK5.

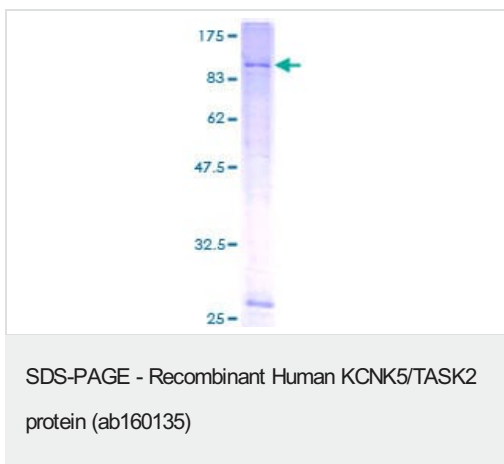
Preparation and Storage

Stability and Storage	Shipped on dry ice. Upon delivery aliquot and store at -80°C. Avoid freeze / thaw cycles. pH: 8.00 Constituents: 0.31% Glutathione, 0.79% Tris HCl
------------------------------	--

General Info

Function	pH-dependent, voltage insensitive, outwardly rectifying potassium channel. Outward rectification is lost at high external K(+) concentrations.
Tissue specificity	Abundant expression in kidney, also detected in liver, placenta and small intestine. In the kidney, expression is restricted to the distal tubules and collecting ducts. Not expressed in proximal tubules or glomeruli.
Sequence similarities	Belongs to the two pore domain potassium channel (TC 1.A.1.8) family.
Cellular localization	Membrane.

Images



ab160135 on a 12.5% SDS-PAGE stained with Coomassie Blue.

Please note: All products are "FOR RESEARCH USE ONLY. NOT FOR USE IN DIAGNOSTIC PROCEDURES"

Our Abpromise to you: Quality guaranteed and expert technical support

- Replacement or refund for products not performing as stated on the datasheet
- Valid for 12 months from date of delivery

- Response to your inquiry within 24 hours
- We provide support in Chinese, English, French, German, Japanese and Spanish
- Extensive multi-media technical resources to help you
- We investigate all quality concerns to ensure our products perform to the highest standards

If the product does not perform as described on this datasheet, we will offer a refund or replacement. For full details of the Abpromise, please visit <https://www.abcam.com/abpromise> or contact our technical team.

Terms and conditions

- Guarantee only valid for products bought direct from Abcam or one of our authorized distributors