

Product datasheet

Recombinant Human KDEL Receptor protein ab153142

1 Image

Description

Product name	Recombinant Human KDEL Receptor protein	
Expression system	Wheat germ	
Protein length	Full length protein	
Animal free	No	
Nature	Recombinant	
Species	Human	
Sequence	MNLFRFLGDLSHLLAIIILLLLKIWKSRSCAGISGKSQVLFAV VFTARYLD LFTNYSLYNTCMKVYIACSFTTVWLIYSKFATYDGNHDT FRVEFLVV PTAILAFLVNHDFTPLEILWTFSYLESVAILPQLFMVSKTGE AETITSH YLFALGVYRTLFLFNWWRVYHFEGFFDLIAMAGLVQTVLYC DFFLYIT KVLKGKKLSLPA	
Amino acids	1 to 212	
Tags	GST tag N-Terminus	

Specifications

Our **Abpromise guarantee** covers the use of **ab153142** in the following tested applications.

The application notes include recommended starting dilutions; optimal dilutions/concentrations should be determined by the end user.

Applications	Western blot
	ELISA
Form	Liquid

Additional notes

Preparation and Storage

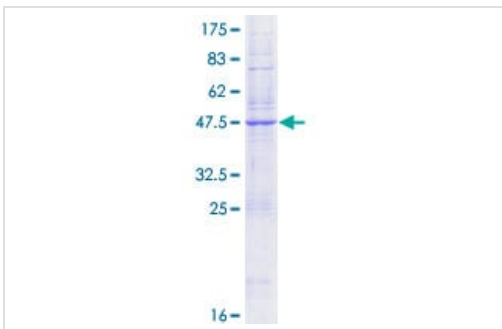
Stability and Storage	Shipped on dry ice. Upon delivery aliquot and store at -80°C. Avoid freeze / thaw cycles. pH: 8.00
------------------------------	---

Constituents: 0.31% Glutathione, 0.79% Tris HCl

General Info

Function	Required for the retention of luminal endoplasmic reticulum resident proteins via vesicular recycling. This receptor recognizes the C-terminal K-D-E-L motif. COPI-coated transport intermediates, either in the form of round vesicles or as tubular processes, mediate retrograde traffic of the KDEL receptor-ligand complexes. Also required for normal vesicular traffic through the Golgi.
Sequence similarities	Belongs to the ERD2 family.
Post-translational modifications	Phosphorylation by PKA at Ser-209 is required for endoplasmic reticulum retention function.
Cellular localization	Cytoplasmic vesicle, COPI-coated vesicle membrane. Endoplasmic reticulum membrane. Endoplasmic reticulum-Golgi intermediate compartment membrane.

Images



ab153142 on a 12.5% SDS-PAGE stained with Coomassie Blue.

SDS-PAGE - Recombinant Human KDEL Receptor protein (ab153142)

Please note: All products are "FOR RESEARCH USE ONLY. NOT FOR USE IN DIAGNOSTIC PROCEDURES"

Our Abpromise to you: Quality guaranteed and expert technical support

- Replacement or refund for products not performing as stated on the datasheet
- Valid for 12 months from date of delivery
- Response to your inquiry within 24 hours
- We provide support in Chinese, English, French, German, Japanese and Spanish
- Extensive multi-media technical resources to help you
- We investigate all quality concerns to ensure our products perform to the highest standards

If the product does not perform as described on this datasheet, we will offer a refund or replacement. For full details of the Abpromise, please visit <https://www.abcam.com/abpromise> or contact our technical team.

Terms and conditions

- Guarantee only valid for products bought direct from Abcam or one of our authorized distributors