

Product datasheet

Recombinant Human Keratocan/KTN protein ab161287

1 Image

Description

Product name	Recombinant Human Keratocan/KTN protein
Expression system	Wheat germ
Protein length	Protein fragment
Animal free	No
Nature	Recombinant
Species	Human
Sequence	GLPSRGFDVSSILDQLSHNQLTKVPRISAHLQHLHLDHMK IKSVNVSVI CPSPSMLPAERDSFSYGPHLRYLRLDGNEIKPPIPMALMT CFRLLQAVI
Amino acids	253 to 351
Tags	GST tag N-Terminus

Specifications

Our **Abpromise guarantee** covers the use of **ab161287** in the following tested applications.

The application notes include recommended starting dilutions; optimal dilutions/concentrations should be determined by the end user.

Applications	Western blot ELISA
Form	Liquid
Additional notes	This product was previously labelled as Keratocan.

Preparation and Storage

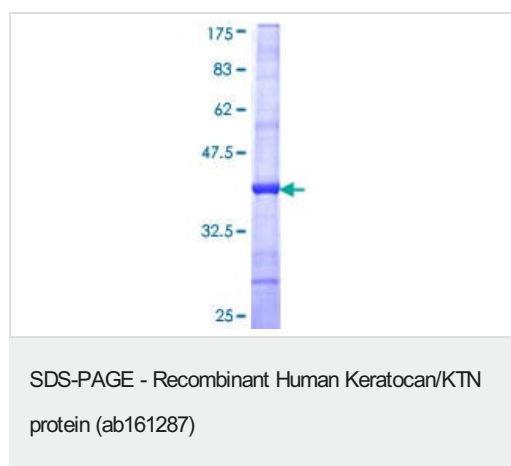
Stability and Storage	Shipped on dry ice. Upon delivery aliquot and store at -80°C. Avoid freeze / thaw cycles. pH: 8.00 Constituents: 0.31% Glutathione, 0.79% Tris HCl
------------------------------	--

General Info

General info

Function	May be important in developing and maintaining corneal transparency and for the structure of the stromal matrix.
Tissue specificity	Cornea. Increased expression in the stroma of keratoconus corneas. Also detected in trachea, and in low levels, in intestine, skeletal muscle, ovary, lung and putamen.
Involvement in disease	Defects in KERA are the cause of the autosomal recessive cornea plana 2 (CNA2) [MIM:217300]. In CNA2, the forward convex curvature is flattened, leading to a decrease in refraction, reduced visual activity, extreme hyperopia (usually plus 10 d or more), hazy corneal limbus, opacities in the corneal parenchyma, and marked arcus senilis (often detected at an early age). CNA2 is a rare disorder with a worldwide distribution, but a high prevalence in the Finnish population.
Sequence similarities	Belongs to the small leucine-rich proteoglycan (SLRP) family. SLRP class II subfamily. Contains 10 LRR (leucine-rich) repeats. Contains 1 LRRNT domain.
Post-translational modifications	Binds keratan sulfate chains.
Cellular localization	Secreted > extracellular space > extracellular matrix.

Images



ab161287 on a 12.5% SDS-PAGE stained with Coomassie Blue.

Please note: All products are "FOR RESEARCH USE ONLY. NOT FOR USE IN DIAGNOSTIC PROCEDURES"

Our Abpromise to you: Quality guaranteed and expert technical support

- Replacement or refund for products not performing as stated on the datasheet
- Valid for 12 months from date of delivery
- Response to your inquiry within 24 hours
- We provide support in Chinese, English, French, German, Japanese and Spanish
- Extensive multi-media technical resources to help you
- We investigate all quality concerns to ensure our products perform to the highest standards

If the product does not perform as described on this datasheet, we will offer a refund or replacement. For full details of the Abpromise,

please visit <https://www.abcam.com/abpromise> or contact our technical team.

Terms and conditions

- Guarantee only valid for products bought direct from Abcam or one of our authorized distributors