

Recombinant Human KLHL22 protein ab164675

1 Image

Description

Product name	Recombinant Human KLHL22 protein
Expression system	Wheat germ
Protein length	Full length protein
Animal free	No
Nature	Recombinant
Species	Human
Sequence	MAEEQEFTQLCKLPAQPSHPHCVNNTYRSAQHSQALLRG LLALRDSGILF DVVLVVEGRHIEAHRILLAASCDYFRGMFAGGLKEMEQEE VLIHGVSYNA MCQILHFYITSELELSLSNVQETLVAACQLQIPEIIHFCCDFL MSWVDEE NILDVYRLAELFDLSRLTEQLDTYILKNFVAFSRTDKYRQLP LEKVYSL SSNRLEVSCETEVEYEGALLYHYSLEQVQADQISLHEPPKL LETVRFP AEVLQRLHDKLDPSPLRDTVASALMYHRNESLQPSLQSP QTELRSD VGFGGIHSTPSTVLSDQAKYLNPLLGEWKHFTASLAPRMS NQGIAVLNNF VYLIGGDNNVQGFRAESRCWRYDPRHNRWFQIQSLQQEH ADLSVCVVGRY IYAVAGRDYHNDLNAVERYDPATNSWAYVAPLKREYAH GATLEGKMY TCGRRGEDYLKETHCYDPGSNTWHTLADGPVRRRAWHGM ATLLNKLYVIGG SNNDAGYRRDVHQVACYSCTSGQWSSVCPLPAGHGEP GIAVLNRIYVLG GRSHNRGSRTGYVHYDVEKDCWEEGPQLDNSISGLAAC VLTLP PPRGTPDRSQADPDFASEVMSVSDWEEFDNSS
Amino acids	1 to 634
Tags	GST tag N-Terminus

## Specifications

---

Our **Abpromise guarantee** covers the use of **ab164675** in the following tested applications.

The application notes include recommended starting dilutions; optimal dilutions/concentrations should be determined by the end user.

**Applications** Western blot

ELISA

**Form** Liquid

**Additional notes**

## Preparation and Storage

---

**Stability and Storage** Shipped on dry ice. Upon delivery aliquot and store at -80°C. Avoid freeze / thaw cycles.

pH: 8.00

Constituents: 0.31% Glutathione, 0.79% Tris HCl

## General Info

---

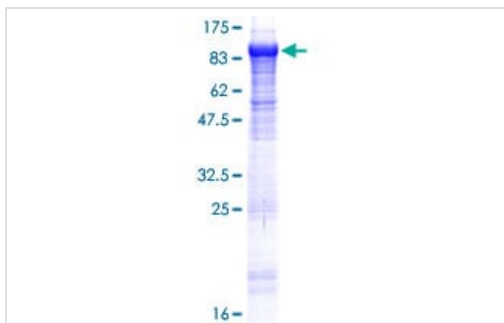
**Function** Substrate-specific adapter of a BCR (BTB-CUL3-RBX1) E3 ubiquitin ligase complex required for cell division. BCR E3 ubiquitin ligase complexes mediate the ubiquitination of target proteins.

**Pathway** Protein modification; protein ubiquitination.

**Sequence similarities** Contains 1 BTB (POZ) domain.  
Contains 6 Kelch repeats.

## Images

---



SDS-PAGE - Recombinant Human KLHL22 protein  
(ab164675)

ab164675 on a 12.5% SDS-PAGE stained with Coomassie Blue.

**Please note:** All products are "FOR RESEARCH USE ONLY. NOT FOR USE IN DIAGNOSTIC PROCEDURES"

## Our Abpromise to you: Quality guaranteed and expert technical support

---

- Replacement or refund for products not performing as stated on the datasheet

- Valid for 12 months from date of delivery
- Response to your inquiry within 24 hours
- We provide support in Chinese, English, French, German, Japanese and Spanish
- Extensive multi-media technical resources to help you
- We investigate all quality concerns to ensure our products perform to the highest standards

If the product does not perform as described on this datasheet, we will offer a refund or replacement. For full details of the Abpromise, please visit <https://www.abcam.com/abpromise> or contact our technical team.

#### **Terms and conditions**

---

- Guarantee only valid for products bought direct from Abcam or one of our authorized distributors