

Recombinant Human LARS2 protein ab161621

1 Image

Description	
Product name	Recombinant Human LARS2 protein
Expression system	Wheat germ
Protein length	Full length protein
Animal free	No
Nature	Recombinant
Species	Human
Sequence	MASVWQRLGFYASLLKRQLNGGPDVIKWERRVIPGCTRSI YSATGKWTKE YTLQTRKDVEKWWHQRIKEQASKISEADKSKPKFYVLSMF PYPSGKLHMG HVRVYTISDTIARFQKMRGMQVINPMGWDAFGLPAENAAV ERNLHPQSWT QSNIKHMRKQLDRLGLCFSWDREITTCLPDYYKWTQYLFIK LYEAGLAYQ KEALVNWDPVDQTVLANEQVDEHGCSWRSGAKVEQKYL RQWFIKTTAYAK AMQDALADLPEWYGIKGMQAHWIGDCVGCHLDFTLKVHG QATGEKLTAYT ATPEAYGTSHVAISPSHRLHGHSSLKEALRMALVPGKD CLTPVMAVNM LTQQEVPVVILAKADLEGSLDSKIGIPSTSSSEDILAQTLGL AYSEVIET LPDGTERLSSSAEFTGMTRQDAFLALTQKARGKRVGGDV TSDKLKDWLIS RQRYWGTPIPVHCPVCGPTVPVPLEDLPVTLPNIASFTGKG GPPLAMASE WVNCSCPRCKGAAKRETDMDTFVDSAWYYFRYTDPHN PHSPFNTAVADY WMPVDLYIGGKEHAVMHLFYARFFSHFCHDQKMVKHREP FHKLLAQGLIK GQTFRLPSGQYLQREEVDLTGSVPVHAKTKEKLEVTWEK MSKSKHNGVDP EEVVEQYGIDTIRLYILFAAPPEKDILWDVKTDALPGVLRW QQRLWTLTT RFIEARASGKSPQPQLLSNKEKAEARKLWEYKNSVISQVT

THFTEDFSLN  
SAISQLMGLSNALSQASQSVILHSPEFEDALCALMVMAAP  
LAPHVTSEIW  
AGLALVPRKLCAHYTWDASVLLQAWPAVDPEFLQQPEV  
VQMAVLINNKAC  
GKIPVPQQVARDQDKVHEFVLQSELGVRLLQGRSIKKSFL  
SPRTALINFL VQD

<b>Amino acids</b>	1 to 903
<b>Tags</b>	GST tag N-Terminus

## Specifications

---

Our **Abpromise guarantee** covers the use of **ab161621** in the following tested applications.

The application notes include recommended starting dilutions; optimal dilutions/concentrations should be determined by the end user.

<b>Applications</b>	ELISA Western blot
<b>Form</b>	Liquid

## Additional notes

## Preparation and Storage

---

<b>Stability and Storage</b>	Shipped on dry ice. Upon delivery aliquot and store at -80°C. Avoid freeze / thaw cycles. pH: 8.00 Constituents: 0.31% Glutathione, 0.79% Tris HCl
------------------------------	--

## General Info

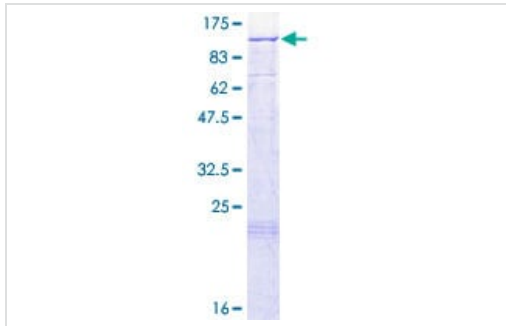
---

<b>Sequence similarities</b>	Belongs to the class-I aminoacyl-tRNA synthetase family.
<b>Cellular localization</b>	Mitochondrion matrix.

---

## Images

---



SDS-PAGE - Recombinant Human LARS2 protein  
(ab161621)

ab161621 on a 12.5% SDS-PAGE stained with Coomassie Blue.

**Please note:** All products are "FOR RESEARCH USE ONLY. NOT FOR USE IN DIAGNOSTIC PROCEDURES"

### Our Abpromise to you: Quality guaranteed and expert technical support

---

- Replacement or refund for products not performing as stated on the datasheet
- Valid for 12 months from date of delivery
- Response to your inquiry within 24 hours
- We provide support in Chinese, English, French, German, Japanese and Spanish
- Extensive multi-media technical resources to help you
- We investigate all quality concerns to ensure our products perform to the highest standards

If the product does not perform as described on this datasheet, we will offer a refund or replacement. For full details of the Abpromise, please visit <https://www.abcam.com/abpromise> or contact our technical team.

### Terms and conditions

---

- Guarantee only valid for products bought direct from Abcam or one of our authorized distributors