

Product datasheet

Recombinant Human LIPG protein (denatured)
ab180286

1 Image

Description	
Product name	Recombinant Human LIPG protein (denatured)
Purity	> 85 % SDS-PAGE.
Expression system	Escherichia coli
Accession	<u>Q9Y5X9</u>
Protein length	Protein fragment
Animal free	No
Nature	Recombinant
Species	Human
Sequence	MGSSHHHHHH SSGLVPRGSH MGSSPVFPGP EGRLEDKLHK PKATQTEVKP SVRFNLRTSK DPEHEGCYLS VGHSQPLEDC SFNMTAKTFF IIHGWTMSGI FENWLHKLVS ALHTREKDAN VVVVDWLPLA HQLYTDVNN TRVVGHSIAR MLDWLQEKDD FSLGNVHLIG YSLGAHVAGY AGNFVKGTVG RITGLDPAGP MFEGADIIHKR LSPDDADFVD VLHTYTRSFG LSIQMPVG HIDYPNGGD FQPGCGLNDV LGSIAYGTT EVVKCEHERA VHLFVDSL VN QDKPSFAFQC TDSNRFKKGI CLSCRKNRCN SIGYNAKKMR NKRNSKMYLK TRA
Predicted molecular weight	38 kDa including tags
Amino acids	21 to 340
Tags	His tag N-Terminus
Description	Recombinant Human LIPG protein

Specifications	
Our Abpromise guarantee covers the use of ab180286 in the following tested applications.	
The application notes include recommended starting dilutions; optimal dilutions/concentrations should be determined by the end user.	
Applications	SDS-PAGE

Form Liquid

Preparation and Storage

Stability and Storage Shipped at 4°C. Store at +4°C short term (1-2 weeks). Upon delivery aliquot. Store at -20°C or -80°C. Avoid freeze / thaw cycle.

pH: 8.00

Constituents: 0.32% Tris HCl, 10% Glycerol (glycerin, glycerine), 2.4% Urea

General Info

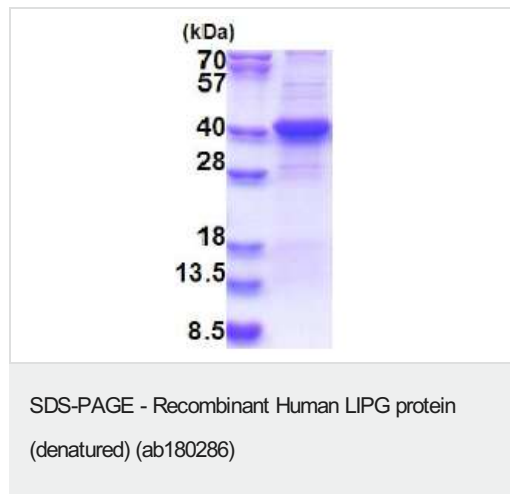
Function Has phospholipase and triglyceride lipase activities. Hydrolyzes high density lipoproteins (HDL) more efficiently than other lipoproteins. Binds heparin.

Tissue specificity High level of expression in the liver, placenta, lung, thyroid, kidney, testis and in the corpus luteum of the ovary. Expressed also in coronary artery endothelial cells, umbilical vein endothelial cells and in hepatocyte and osteosarcoma cell lines. Not detected in heart, brain and muscle.

Sequence similarities Belongs to the AB hydrolase superfamily. Lipase family. Contains 1 PLAT domain.

Cellular localization Secreted.

Images



15% SDS-PAGE (3ug)

Please note: All products are "FOR RESEARCH USE ONLY. NOT FOR USE IN DIAGNOSTIC PROCEDURES"

Our Abpromise to you: Quality guaranteed and expert technical support

- Replacement or refund for products not performing as stated on the datasheet
- Valid for 12 months from date of delivery
- Response to your inquiry within 24 hours
- We provide support in Chinese, English, French, German, Japanese and Spanish

- Extensive multi-media technical resources to help you
- We investigate all quality concerns to ensure our products perform to the highest standards

If the product does not perform as described on this datasheet, we will offer a refund or replacement. For full details of the Abpromise, please visit <https://www.abcam.com/abpromise> or contact our technical team.

Terms and conditions

- Guarantee only valid for products bought direct from Abcam or one of our authorized distributors