

## Product datasheet

# Recombinant Human LSM12 protein ab139209

1 Image

### Description

<b>Product name</b>	Recombinant Human LSM12 protein
<b>Purity</b>	> 90 % SDS-PAGE. ab139209 was purified by using conventional chromatography techniques.
<b>Expression system</b>	Escherichia coli
<b>Accession</b>	<u><b>Q3MHD2</b></u>
<b>Protein length</b>	Full length protein
<b>Animal free</b>	No
<b>Nature</b>	Recombinant
<b>Species</b>	Human
<b>Sequence</b>	MGSSHHHHHH SSGLVPRGSH MGSMAAPPGE YFSVGSQVSC RTCQEQRLQG EVVAFDYQSK MLALKCPSSS GKPNHADILL INLQYVSEVE IINDRTETPP PLASLNVSKL ASKARTEKEE KLSQAYAISA GVSLEGQQLF QTIHKTIDC KWQEKNVVM EEVVITPPYQ VENCKGKEGS ALSHVRKIVE KHFRDVESQK ILQRSQAQQP QKEAALSS
<b>Predicted molecular weight</b>	24 kDa including tags
<b>Amino acids</b>	1 to 195
<b>Tags</b>	His tag N-Terminus

### Specifications

Our **Abpromise guarantee** covers the use of **ab139209** in the following tested applications.

The application notes include recommended starting dilutions; optimal dilutions/concentrations should be determined by the end user.

<b>Applications</b>	Mass Spectrometry SDS-PAGE
<b>Mass spectrometry</b>	MALDI-TOF
<b>Form</b>	Liquid

### Preparation and Storage

## Stability and Storage

Shipped at 4°C. Store at +4°C short term (1-2 weeks). Upon delivery aliquot. Store at -20°C or -80°C. Avoid freeze / thaw cycle.

pH: 7.50

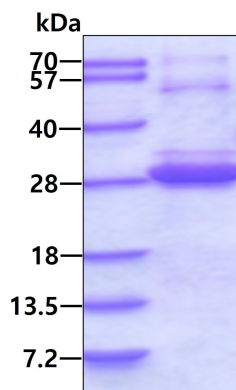
Constituents: 0.02% DTT, 0.32% Tris HCl, 10% Glycerol (glycerin, glycerine), 0.58% Sodium chloride

## General Info

### Relevance

LSM12 belongs to the LSM12 family. The exact function of LSM12 is not known.

## Images



SDS-PAGE of ab139209 (3µg) under reducing condition and visualized by coomassie blue stain.

SDS-PAGE - Recombinant Human LSM12 protein  
(ab139209)

**Please note:** All products are "FOR RESEARCH USE ONLY. NOT FOR USE IN DIAGNOSTIC PROCEDURES"

## Our Abpromise to you: Quality guaranteed and expert technical support

- Replacement or refund for products not performing as stated on the datasheet
- Valid for 12 months from date of delivery
- Response to your inquiry within 24 hours
- We provide support in Chinese, English, French, German, Japanese and Spanish
- Extensive multi-media technical resources to help you
- We investigate all quality concerns to ensure our products perform to the highest standards

If the product does not perform as described on this datasheet, we will offer a refund or replacement. For full details of the Abpromise, please visit <https://www.abcam.com/abpromise> or contact our technical team.

## Terms and conditions

- Guarantee only valid for products bought direct from Abcam or one of our authorized distributors