

## Product datasheet

# Recombinant Human MAP2 protein ab114686

[1 Image](#)

### Description

---

<b>Product name</b>	Recombinant Human MAP2 protein
<b>Expression system</b>	Wheat germ
<b>Accession</b>	<b><u>P11137-2</u></b>
<b>Protein length</b>	Full length protein
<b>Animal free</b>	No
<b>Nature</b>	Recombinant
<b>Species</b>	Human
<b>Sequence</b>	MADERKDEAKAPHWTSAPL TEASAHSHPPEIKDQGGAG EGLVRSANGFPY REDEEGAFGEHGSQGTYSNTKENGINGELTSADRETAEE VSARVQVVTA EAVAVLKGEQEKEAQHKDQTAALPLAAEETANLPPSPPP SPASEQTVTVE EAAGGESALAPSVFKQAKDKVSDGVTKSPEKRSSLPRP SSILPPRRGVSG DRDENSFSLNSSISSARRTTRSEPIRRAGKSGTSTPTTPG STAITPGTP PSYSSRTPGTPGTPSYPRTPHTPGTPKSAILVPSEKKVAIR TPPKSPAT PKQLRLINQPLPDLKNVSKIGSTDNIKYQPKGGQVQMTK KIDLSHVTS KCGSLKNIRHRPGGGRVKIESVKLDFKEKAQAKVGSLDN AHHVPGGGNVK IDSQKLNFRHAKARVDHGAEITQSPGRSSVASPRRLSN VSSSGSINLL ESPQLATLAEDVTAALAKQGL
<b>Predicted molecular weight</b>	78 kDa including tags
<b>Amino acids</b>	1 to 471
<b>Tags</b>	GST tag N-Terminus

### Specifications

---

Our **Abpromise guarantee** covers the use of **ab114686** in the following tested applications.

The application notes include recommended starting dilutions; optimal dilutions/concentrations should be determined by the end user.

<b>Applications</b>	Western blot SDS-PAGE ELISA
<b>Form</b>	Liquid

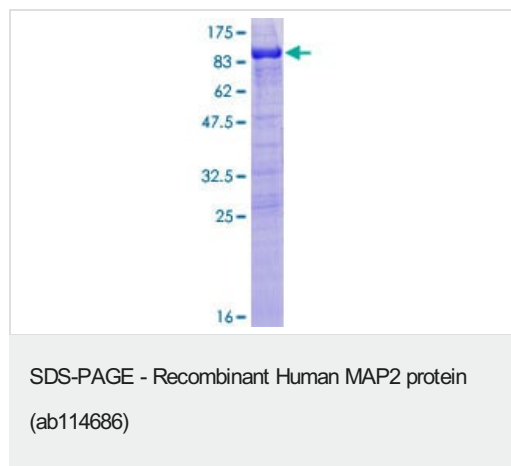
## Preparation and Storage

<b>Stability and Storage</b>	Shipped on dry ice. Upon delivery aliquot and store at -80°C. Avoid freeze / thaw cycles. pH: 8.00 Constituents: 0.3% Glutathione, 0.79% Tris HCl
------------------------------	---

## General Info

<b>Function</b>	The exact function of MAP2 is unknown but MAPs may stabilize the microtubules against depolymerization. They also seem to have a stiffening effect on microtubules.
<b>Sequence similarities</b>	Contains 3 Tau/MAP repeats.
<b>Post-translational modifications</b>	Phosphorylated at serine residues in K-X-G-S motifs by MAP/microtubule affinity-regulating kinase (MARK1 or MARK2), causing detachment from microtubules, and their disassembly (By similarity). Isoform 2 is probably phosphorylated by PKA at Ser-323, Ser-354 and Ser-386 and by FYN at Tyr-67.
<b>Cellular localization</b>	Cytoplasm, cytoskeleton.

## Images



ab114686 analysed on a 12.5% SDS-PAGE gel stained with Coomassie Blue.

**Please note:** All products are "FOR RESEARCH USE ONLY. NOT FOR USE IN DIAGNOSTIC PROCEDURES"

## Our Abpromise to you: Quality guaranteed and expert technical support

- Replacement or refund for products not performing as stated on the datasheet
- Valid for 12 months from date of delivery
- Response to your inquiry within 24 hours

- We provide support in Chinese, English, French, German, Japanese and Spanish
- Extensive multi-media technical resources to help you
- We investigate all quality concerns to ensure our products perform to the highest standards

If the product does not perform as described on this datasheet, we will offer a refund or replacement. For full details of the Abpromise, please visit <https://www.abcam.com/abpromise> or contact our technical team.

### **Terms and conditions**

---

- Guarantee only valid for products bought direct from Abcam or one of our authorized distributors