

Recombinant human MAP3K8/COT protein ab55700

4 Images

Description	
Product name	Recombinant human MAP3K8/COT protein
Biological activity	Specific activity: 1012 nmol/min/mg
Purity	> 75 % Densitometry. Affinity purified.
Expression system	Baculovirus infected Sf9 cells
Accession	<b><u>P46527</u></b>
Protein length	Protein fragment
Animal free	No
Nature	Recombinant
Species	Human
Sequence	MENLYASEEP AVYEPSLMTM CQDSNQNDER SKSLLLSGQE VPWLSSVRYG TVEDLLAFAN HISNTAKHFY GQRPQESGIL LNMVITPQNG RYQIDSDVLL IPWKLTyrni GSDFIPRGAF GKVYLAQDIK TKKRMACKLI PVDQFKPSDV EIQACFRHEN IAELYGAVLW GETVHLFMEA GEGGSVLEKL ESCGPMREFE IIWVTKHVLK GLDFLHKKV IHHDIKPSNI VFMSTKAVLV DFGLSVQMTE DVYFPKDLRG TEIYMSPEVI LCRGHSTKAD YSLGATLIH MQTGTPPWVK RYPRsayPSY LYIIHKQAPP LEDIADDCSP GMRELIEASL ERNPNHRPRA ADLLKHEALN PPREDQPR
Predicted molecular weight	70 kDa
Amino acids	30 to 397
Tags	GST tag N-Terminus

Specifications	
Our <b><u>Abpromise guarantee</u></b> covers the use of <b>ab55700</b> in the following tested applications.	
The application notes include recommended starting dilutions; optimal dilutions/concentrations should be determined by the end user.	
Applications	SDS-PAGE Functional Studies

<b>Form</b>	Liquid
<b>Additional notes</b>	<p><b>ab43623</b> (Human ERK1 full length protein) and <b>ab43614</b> (Human Myelin Basic Protein full length protein) can be utilized as a substrate for assessing kinase activity</p> <p>This product was previously labelled as MAP3K8</p>

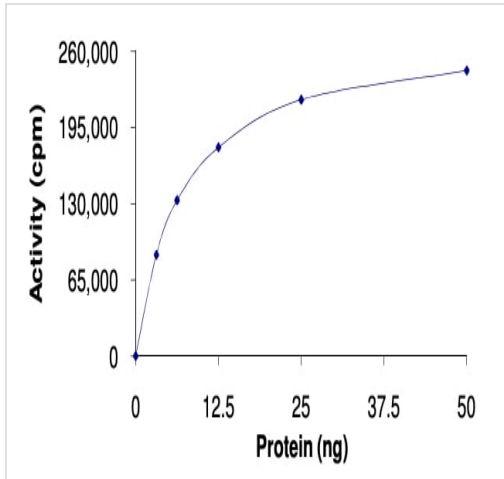
## Preparation and Storage

<b>Stability and Storage</b>	<p>Shipped on dry ice. Upon delivery aliquot and store at -80°C. Avoid freeze / thaw cycles.</p> <p>pH: 7.50</p> <p>Constituents: 0.0038% EGTA, 0.00174% PMSF, 0.00385% DTT, 0.79% Tris HCl, 0.00292% EDTA, 25% Glycerol (glycerin, glycerine), 0.87% Sodium chloride</p> <p>This product is an active protein and may elicit a biological response in vivo, handle with caution.</p>
------------------------------	---

## General Info

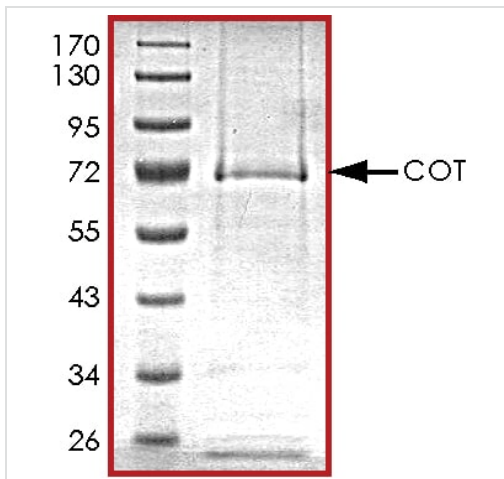
<b>Function</b>	Required for TLR4 activation of the MEK/ERK pathway. Able to activate NF-kappa-B 1 by stimulating proteasome-mediated proteolysis of NF-kappa-B 1/p105. Plays a role in the cell cycle. The longer form has some transforming activity, although it is much weaker than the activated cot oncoprotein.
<b>Tissue specificity</b>	Expressed in several normal tissues and human tumor-derived cell lines.
<b>Sequence similarities</b>	<p>Belongs to the protein kinase superfamily. STE Ser/Thr protein kinase family. MAP kinase kinase kinase subfamily.</p> <p>Contains 1 protein kinase domain.</p>
<b>Developmental stage</b>	Isoform 1 is activated specifically during the S and G2/M phases of the cell cycle.
<b>Post-translational modifications</b>	Autophosphorylated. Isoform 1 undergoes phosphorylation mainly on Ser residues, and isoform 2 on both Ser and Thr residues.
<b>Cellular localization</b>	Cytoplasm.

## Images



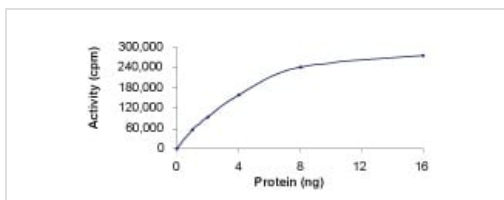
The specific activity of MAP3K8/COT (ab55700) was determined to be 1100 nmol/min/mg as per activity assay protocol

Functional Studies - Recombinant human  
MAP3K8/COT protein (ab55700)



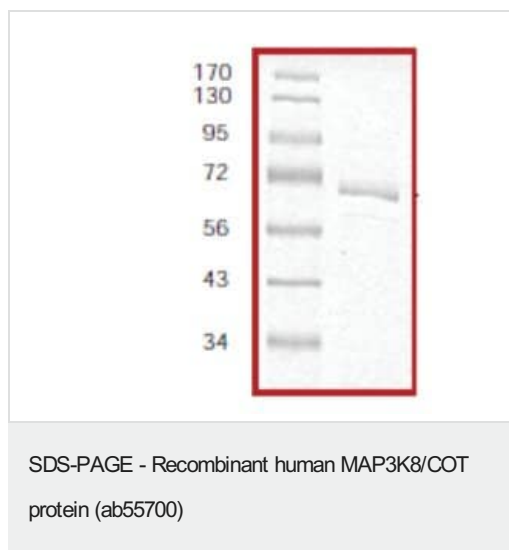
SDS PAGE analysis of ab55700

SDS-PAGE - Recombinant human MAP3K8/COT  
protein (ab55700)



Kinase activity plot using ab55700. Specific activity: 1012 nmol/min/mg.

Functional Studies - Recombinant human  
MAP3K8/COT protein (ab55700)



SDS-PAGE analysis of ab55700, with molecular weight markers.

Approximate molecular weight: 70kDa

**Please note:** All products are "FOR RESEARCH USE ONLY. NOT FOR USE IN DIAGNOSTIC PROCEDURES"

### Our Abpromise to you: Quality guaranteed and expert technical support

---

- Replacement or refund for products not performing as stated on the datasheet
- Valid for 12 months from date of delivery
- Response to your inquiry within 24 hours
- We provide support in Chinese, English, French, German, Japanese and Spanish
- Extensive multi-media technical resources to help you
- We investigate all quality concerns to ensure our products perform to the highest standards

If the product does not perform as described on this datasheet, we will offer a refund or replacement. For full details of the Abpromise, please visit <https://www.abcam.com/abpromise> or contact our technical team.

### Terms and conditions

---

- Guarantee only valid for products bought direct from Abcam or one of our authorized distributors