

Recombinant Human MCM6 protein ab114758

1 Image

Description

Product name	Recombinant Human MCM6 protein
Expression system	Wheat germ
Accession	<u>Q14566</u>
Protein length	Full length protein
Animal free	No
Nature	Recombinant
Species	Human

Sequence

MDLAAAAEPGAGSQHLEVRDEVAEKCQKLFLDFLEEFQ
SSDGEIKYLQLA
EELIRPERNTLVVSFVDLEQFNQQLSTTIQEEFYRVYPYLC
RALKTFVKD
RKEIPLAKDFYVAFQDLPTRHKIRELTSSRIGLLTRISGQVV
RTHPVHPE
LVSGTFLCLDCQTVIRDVEQQFKYTQPNICRNPVCANRRR
FLLDTNKSFR
VDFQKVRIQETQAELPRGSIPRSLEVILRAEAVESAQAGD
KCDFTGTLV
VPDVSKLSTPGARAETNSRVSGVDGYETEGIRGLRALGV
RDLSYRLVFLA
CCVAPTNPFRGGKELRDEEQTAESIKNQMTVKEWEKVF
MSQDKNLYHNL
CTSLFPTIHGNDEVKRGVLLMLFGGVPKTTGEGTSLRGDIN
VCVGDPT
AKSQFLKHVEEFSPRAVYTSKGASSAAGLTAAVVRDEES
HEFVIEAGALM
LADNGVCCIDEFDKMDVRDQVAIHEAMEQQTISITKAGVK
ATLNARTSIL
AAANPISGHYDRSKSLKQNNLSAPIMSRFDLFFILVDECNE
VTDYAIAR
RVDLHSRIEESIDRVYSLDDIRRYLLFARQFKPKISKESEDF
MEQYKH
LRQRDGSQVTKSSWRITVRQLESMIRLSEAMARMHCCDE
VQPKHVKEAFR
LLNKSIIIRVETPDVNLDQEEIIQMEVDEGAGGINGHADSPA
PVNGINGYN

EDINQESAPKASRLRGFSEYCRISNLVLHLRKVEEEEDS
ALKRSELVN
WYLKEIESEIDSEELINKKRIIEKVIHRLTHYDHVLIETQAG
LKGSTE GSESYEEDPYLVVNPNYLLED

Predicted molecular weight	116 kDa including tags
Amino acids	1 to 821

Specifications

Our **Abpromise guarantee** covers the use of **ab114758** in the following tested applications.

The application notes include recommended starting dilutions; optimal dilutions/concentrations should be determined by the end user.

Applications	ELISA SDS-PAGE Western blot
Form	Liquid

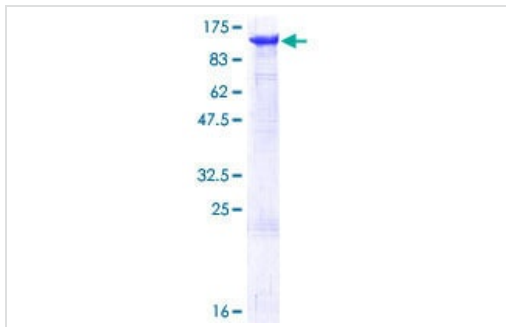
Preparation and Storage

Stability and Storage	Shipped on dry ice. Upon delivery aliquot and store at -80°C. Avoid freeze / thaw cycles. pH: 8.00 Constituents: 0.3% Glutathione, 0.79% Tris HCl
------------------------------	---

General Info

Function	Acts as component of the MCM2-7 complex (MCM complex) which is the putative replicative helicase essential for 'once per cell cycle' DNA replication initiation and elongation in eukaryotic cells. The active ATPase sites in the MCM2-7 ring are formed through the interaction surfaces of two neighboring subunits such that a critical structure of a conserved arginine finger motif is provided in trans relative to the ATP-binding site of the Walker A box of the adjacent subunit. The six ATPase active sites, however, are likely to contribute differentially to the complex helicase activity.
Sequence similarities	Belongs to the MCM family. Contains 1 MCM domain.
Post-translational modifications	Phosphorylated upon DNA damage, probably by ATM or ATR.
Cellular localization	Nucleus. Binds to chromatin during G1 and detach from it during S phase.

Images



12.5% SDS-PAGE Stained with Coomassie Blue showing ab114758 at approximately 116.38kDa.

SDS-PAGE - Recombinant Human MCM6 protein
(ab114758)

Please note: All products are "FOR RESEARCH USE ONLY. NOT FOR USE IN DIAGNOSTIC PROCEDURES"

Our Abpromise to you: Quality guaranteed and expert technical support

- Replacement or refund for products not performing as stated on the datasheet
- Valid for 12 months from date of delivery
- Response to your inquiry within 24 hours
- We provide support in Chinese, English, French, German, Japanese and Spanish
- Extensive multi-media technical resources to help you
- We investigate all quality concerns to ensure our products perform to the highest standards

If the product does not perform as described on this datasheet, we will offer a refund or replacement. For full details of the Abpromise, please visit <https://www.abcam.com/abpromise> or contact our technical team.

Terms and conditions

- Guarantee only valid for products bought direct from Abcam or one of our authorized distributors