

Recombinant human MDH2 protein ab99238

1 References 1 Image

Description

Product name	Recombinant human MDH2 protein
Biological activity	<p>Specific activity is &gt; 30 units/mg, and is defined as the amount of enzyme that cleaves 1umole of oxalacetate and beta-NADH to L-malate and beta-NAD per minute at pH7.5 at 25°C</p> <p><b>Activity Assay</b></p> <p>Prepare assay buffer into a suitable container and pre-chill on ice before use: The final concentrations are 100 mM Potassium phosphate, 0.13mM beta-nicotinamide adenine dinucleotide, reduced form, 0.25mM oxalacetic acid.</p> <p>Add recombinant MDH protein with various concentrations (0.1ug, 0.5ug, 1ug) in assay buffer.</p> <p>Mix by inversion and equilibrate to 1°C and monitor at A340nm until the value is constant using a spectrophotometer.</p> <p>Record the increase at A340nm for approximately 2 minutes</p>
Purity	<p>&gt; 95 % SDS-PAGE.</p> <p>ab99238 is purified using conventional chromatography techniques.</p>
Expression system	Escherichia coli
Accession	<b>P40926</b>
Protein length	Full length protein
Animal free	No
Nature	Recombinant
Species	Human
Sequence	

MGSSHHHHHHSSGLVPRGSHMAKVAVLGASGGIGQPLS  
LLLKNSPLVSRL  
TLYDIAHTPGVAADLSHIETKAAVKGYLGPEQLPDCLKGC  
DVVVIPAGVP  
RKPGMTRDDL FNTNATIVATLTAACAQHCPEAMICVIANPV  
NSTIPITAE  
VFKKHGVYNPNKIFGVTTLDVIRANTFVAELKGLDPARVNV  
PVIGGHAGK  
TIIP LISQCTPKVDFPQDQLTALTGRIQEAGTEVVKAKAGAG  
SATLSMAY  
AGARFVFSLVDAMNGKEGVVECSFVKSQETECTYFSTPL  
LLGKKGIEKNL  
GIGKVSSFEEKMISDAIPELKASIKKGEDFVKTLK

<b>Predicted molecular weight</b>	35 kDa including tags
<b>Amino acids</b>	25 to 338
<b>Tags</b>	His tag N-Terminus

## Specifications

Our **Abpromise guarantee** covers the use of **ab99238** in the following tested applications.

The application notes include recommended starting dilutions; optimal dilutions/concentrations should be determined by the end user.

<b>Applications</b>	SDS-PAGE Mass Spectrometry Functional Studies
<b>Mass spectrometry</b>	MALDI-TOF
<b>Form</b>	Liquid

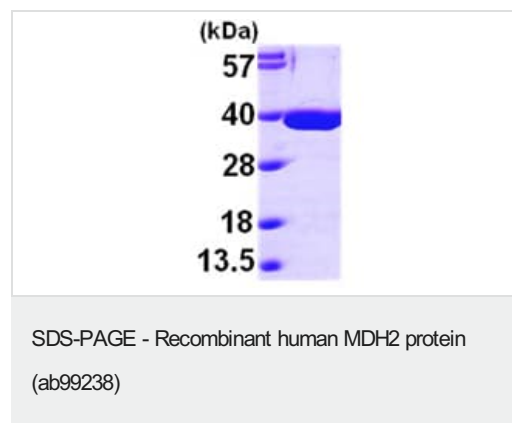
## Preparation and Storage

<b>Stability and Storage</b>	Shipped at 4°C. Upon delivery aliquot and store at -20°C or -80°C. Avoid repeated freeze / thaw cycles.  pH: 7.50 Constituents: 0.316% Tris HCl, 10% Glycerol (glycerin, glycerine)  This product is an active protein and may elicit a biological response in vivo, handle with caution.
------------------------------	--

## General Info

<b>Sequence similarities</b>	Belongs to the LDH/MDH superfamily. MDH type 1 family.
<b>Post-translational modifications</b>	Acetylation is enhanced by up to 67% after treatment either with trichostin A (TSA) or with nicotinamide (NAM) with the appearance of tri- and tetraacetylations. Glucose also increases acetylation by about 60%.
<b>Cellular localization</b>	Mitochondrion matrix.

## Images



15% SDS-PAGE showing ab99238 at approximately 35.2kDa (3μg).

**Please note:** All products are "FOR RESEARCH USE ONLY. NOT FOR USE IN DIAGNOSTIC PROCEDURES"

### **Our Abpromise to you: Quality guaranteed and expert technical support**

---

- Replacement or refund for products not performing as stated on the datasheet
- Valid for 12 months from date of delivery
- Response to your inquiry within 24 hours
  
- We provide support in Chinese, English, French, German, Japanese and Spanish
- Extensive multi-media technical resources to help you
- We investigate all quality concerns to ensure our products perform to the highest standards

If the product does not perform as described on this datasheet, we will offer a refund or replacement. For full details of the Abpromise, please visit <https://www.abcam.com/abpromise> or contact our technical team.

### **Terms and conditions**

---

- Guarantee only valid for products bought direct from Abcam or one of our authorized distributors