

## Product datasheet

# Recombinant Human MEOX 2 protein ab114829

1 Image

### Description

<b>Product name</b>	Recombinant Human MEOX 2 protein	
<b>Expression system</b>	Wheat germ	
<b>Accession</b>	<b><u>Q6FHY5</u></b>	
<b>Protein length</b>	Full length protein	
<b>Animal free</b>	No	
<b>Nature</b>	Recombinant	
<b>Species</b>	Human	
<b>Sequence</b>	MEHPLFGCLRSPHATAQGLHPFSQSSLALHGRSDHMSYP ELSTSSSSCII AGYPNEEGMFASQHHRGHHHHHHHHHHHHHHHHHHHHQQQHQALQ TNWHLPMSSPP SAARHSLCLQPDSGGPELGSSPPVLCSSSSSLGSSTPT GAACAPGDYGR QALSPAEAEKRSGGKRKSDSSDSQEGNYKSEVNSKPRK ERTAFTKEQIRE LEAEFAHHNYLTRRRIEIAVNLDLTERQVKVWFQNRMMK WKRVKGGQQG AAAREKELVNVKKGTLTPSELGIGAATLQQTGDSIANED SHDSDHSSEH AHL	
<b>Predicted molecular weight</b>	59 kDa including tags	
<b>Amino acids</b>	1 to 303	

### Specifications

Our **Abpromise guarantee** covers the use of **ab114829** in the following tested applications.

The application notes include recommended starting dilutions; optimal dilutions/concentrations should be determined by the end user.

<b>Applications</b>	ELISA
	SDS-PAGE
	Western blot
<b>Form</b>	Liquid

### Preparation and Storage

## Preparation and Storage

### Stability and Storage

Shipped on dry ice. Upon delivery aliquot and store at -80°C. Avoid freeze / thaw cycles.

pH: 8.00

Constituents: 0.3% Glutathione, 0.79% Tris HCl

## General Info

### Function

Role in mesoderm induction and its earliest regional specification, somitogenesis, and myogenic and sclerotomal differentiation. May have a regulatory role when quiescent vascular smooth muscle cells reenter the cell cycle.

### Tissue specificity

Embryo and placenta.

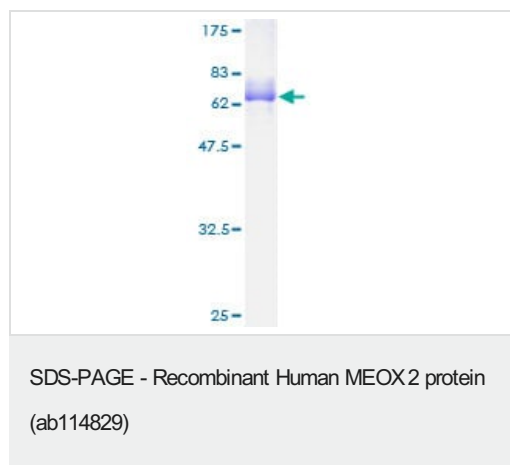
### Sequence similarities

Contains 1 homeobox DNA-binding domain.

### Cellular localization

Nucleus.

## Images



ab114829 analysed on a 12.5% SDS-PAGE gel stained with Coomassie Blue.

**Please note:** All products are "FOR RESEARCH USE ONLY. NOT FOR USE IN DIAGNOSTIC PROCEDURES"

## Our Abpromise to you: Quality guaranteed and expert technical support

- Replacement or refund for products not performing as stated on the datasheet
- Valid for 12 months from date of delivery
- Response to your inquiry within 24 hours
- We provide support in Chinese, English, French, German, Japanese and Spanish
- Extensive multi-media technical resources to help you
- We investigate all quality concerns to ensure our products perform to the highest standards

If the product does not perform as described on this datasheet, we will offer a refund or replacement. For full details of the Abpromise, please visit <https://www.abcam.com/abpromise> or contact our technical team.

## Terms and conditions

---

- Guarantee only valid for products bought direct from Abcam or one of our authorized distributors