

Product datasheet

Recombinant Human MEST protein ab116871

1 Image

Description

Product name	Recombinant Human MEST protein	
Expression system	Wheat germ	
Accession	<u>Q5EB52</u>	
Protein length	Full length protein	
Animal free	No	
Nature	Recombinant	
Species	Human	
Sequence	MVRRLRLRRMREWWVQVGLLAVPLLAAYLHIPPQLSPA LHSWKSSGKFF TYGLRIFYQDSVGVVGSPEIVLLHGFPTSSYDWYKWE LTLRFHRVI ALDFLGFGFSDKPRPHHYSIFEQASIVEALLRHLGLQNRRI NLLSHDYGD VAQELLYRYKQNRSGRLTIKSLCLSNGGIFPETHRPLLLQK LLKDGGVL SPILTRLMNFFVFSRGLTPVFGPYTRPSESELWDMWAGIR NNDGNLVIDS LLQYNQRKKFRRRWV GALASVTIPIHFYGPLDPVNPYPEF LELYRRTL PRSTVSILDDHISHYPQLEDPMGFLNAYMGFINSF	
Predicted molecular weight	63 kDa including tags	
Amino acids	1 to 335	
Tags	GST tag N-Terminus	

Specifications

Our **Abpromise guarantee** covers the use of **ab116871** in the following tested applications.

The application notes include recommended starting dilutions; optimal dilutions/concentrations should be determined by the end user.

Applications	ELISA
	SDS-PAGE
	Western blot
Form	Liquid

Preparation and Storage

Stability and Storage

Shipped on dry ice. Upon delivery aliquot and store at -80°C. Avoid freeze / thaw cycles.

pH: 8.00

Constituents: 0.3% Glutathione, 0.79% Tris HCl

General Info

Tissue specificity

Highly expressed in hydatidiform moles, but barely expressed in dermoid cysts. Biallelic expression is detected in blood lymphocytes. Seems to be imprinted in an isoform-specific manner rather than in a tissue-specific manner in lymphocytes. Isoform 1 is expressed only from the paternal allele. Isoform 2 is expressed from both the paternal allele and the maternal allele.

Sequence similarities

Belongs to the AB hydrolase superfamily.

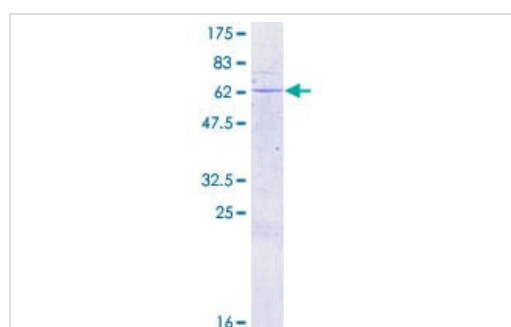
Developmental stage

Monoallelic expression of paternally derived allele was observed in all fetal tissues examined, including brain, skeletal muscle, kidney, adrenal, tongue, heart, skin and placenta. In 75-day fetus, expressed in the amnion, brain, heart, lung, stomach, gut, adrenal, kidney, muscle and liver.

Cellular localization

Endoplasmic reticulum membrane.

Images



12.5% SDS-PAGE gel showing ab116871, at approximately 62.92kDa, stained with Coomassie Blue.

SDS-PAGE - Recombinant Human MEST protein
(ab116871)

Please note: All products are "FOR RESEARCH USE ONLY. NOT FOR USE IN DIAGNOSTIC PROCEDURES"

Our Abpromise to you: Quality guaranteed and expert technical support

- Replacement or refund for products not performing as stated on the datasheet
- Valid for 12 months from date of delivery
- Response to your inquiry within 24 hours

- We provide support in Chinese, English, French, German, Japanese and Spanish
- Extensive multi-media technical resources to help you
- We investigate all quality concerns to ensure our products perform to the highest standards

If the product does not perform as described on this datasheet, we will offer a refund or replacement. For full details of the Abpromise, please visit <https://www.abcam.com/abpromise> or contact our technical team.

Terms and conditions

- Guarantee only valid for products bought direct from Abcam or one of our authorized distributors