

Product datasheet

Recombinant Human METTL11A protein (His tag) ab211312

1 Image

Description

Product name	Recombinant Human METTL11A protein (His tag)
Purity	> 95 % SDS-PAGE. ab211312 was purified using conventional chromatography techniques.
Expression system	Escherichia coli
Accession	<u>Q9BV86</u>
Protein length	Full length protein
Animal free	No
Nature	Recombinant
Species	Human
Sequence	MGSSHHHHHH SSGLVPRGSH MGSEFMTSEV IEDEKQFYSK AKTYWKQIPP TVDGMLGGYG HISSIDINSS RKFLQRFLRE GPNKTGTSCA LDCGAGIGRI TKRLLLPLFR EVDMDITED FLVQAKTYLG EEGKRVRYNF CCGLQDFTPE PDSYDVIWIQ WIGHLTDQH LAEFLRRCKG SLRPNIGIVI KDNMAQEGVI LDDVDSSVCR DLDVVRRIC SAGLSLLAEE RQENLPDEIY HVYSFALR
Predicted molecular weight	28 kDa including tags
Amino acids	1 to 223
Tags	His tag N-Terminus
Additional sequence information	NP_054783.

Specifications

Our **Abpromise guarantee** covers the use of **ab211312** in the following tested applications.

The application notes include recommended starting dilutions; optimal dilutions/concentrations should be determined by the end user.

Applications	SDS-PAGE
Form	Liquid

Preparation and Storage

Stability and Storage

Shipped at 4°C. Store at +4°C short term (1-2 weeks). Upon delivery aliquot. Store at -20°C or -80°C. Avoid freeze / thaw cycle.

pH: 8.00

Constituents: 0.32% Tris HCl, 0.87% Sodium chloride, 10% Glycerol (glycerin, glycerine)

General Info

Function

Alpha-N-methyltransferase that methylates the N-terminus of target proteins containing the N-terminal motif [Ala/Pro/Ser]-Pro-Lys when the initiator Met is cleaved. Specifically catalyzes mono-, di- or tri-methylation of exposed alpha-amino group of Ala, Pro or Ser residue in the [Ala/Pro/Ser]-Pro-Lys motif. Mediates the N-terminal methylation of KLHL31, MYL2, MYL3, RB1, RCC1, RPL23A and SET. Required during mitosis for normal bipolar spindle formation and chromosome segregation.

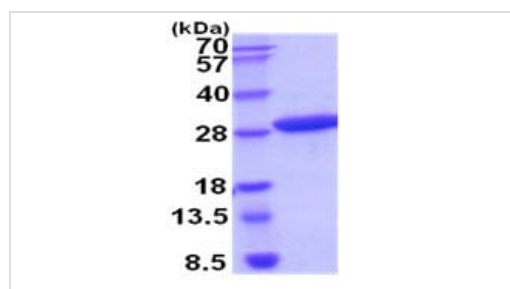
Sequence similarities

Belongs to the methyltransferase superfamily. NTM1 family.

Cellular localization

Nucleus. Predominantly nuclear.

Images



15% SDS-PAGE analysis of ab211312 (3 µg).

SDS-PAGE - Recombinant Human METTL11A
protein (His tag) (ab211312)

Please note: All products are "FOR RESEARCH USE ONLY. NOT FOR USE IN DIAGNOSTIC PROCEDURES"

Our Abpromise to you: Quality guaranteed and expert technical support

- Replacement or refund for products not performing as stated on the datasheet
- Valid for 12 months from date of delivery
- Response to your inquiry within 24 hours
- We provide support in Chinese, English, French, German, Japanese and Spanish
- Extensive multi-media technical resources to help you
- We investigate all quality concerns to ensure our products perform to the highest standards

If the product does not perform as described on this datasheet, we will offer a refund or replacement. For full details of the Abpromise, please visit <https://www.abcam.com/abpromise> or contact our technical team.

Terms and conditions

- Guarantee only valid for products bought direct from Abcam or one of our authorized distributors