

Recombinant Human MICB protein ab158894

1 Image

Description	
Product name	Recombinant Human MICB protein
Expression system	Wheat germ
Protein length	Full length protein
Animal free	No
Nature	Recombinant
Species	Human
Sequence	MGLGRVLLFLAVAFPFAPPAAAAEPHSLRYNLMVLSQDG SVQSGFLAEGH LDGQPFLRYDRQKRRAKPQGQWAEDVLGAETWDTETED LTENGQDLRRTL THIKDQKGVPQSSRAQTLAMNVTNFWKEDAMKTKTHYRA MQADCLQKLQR YKSGVAIRRTVPPMVNVTCEVSEGNITVTCRASSFYPR NITLTWRQDG VSLSHNTQQWGDVLPDGNQTYQTTWVATRIRQGEEQRFTC YMEHSGNHGTH PVPSGKALVLQSQRTDFPYVSAAMPCFVILLCVPCCKKK TSAAEGPEL VSLQVLDQHPVGTGDHRDAAQLGFQPLMSATGSTGSTE GA
Amino acids	1 to 340
Tags	GST tag N-Terminus

Specifications	
Our Abpromise guarantee covers the use of ab158894 in the following tested applications.	
The application notes include recommended starting dilutions; optimal dilutions/concentrations should be determined by the end user.	
Applications	ELISA Western blot
Form	Liquid
Additional notes	

Preparation and Storage

Stability and Storage

Shipped on dry ice. Upon delivery aliquot and store at -80°C. Avoid freeze / thaw cycles.

pH: 8.00

Constituents: 0.31% Glutathione, 0.79% Tris HCl

General Info

Function

Seems to have no role in antigen presentation. Acts as a stress-induced self-antigen that is recognized by gamma delta T cells. Ligand for the KLRK1/NKG2D receptor. Binding to KLRK1 leads to cell lysis.

Tissue specificity

Widely expressed with the exception of the central nervous system where it is absent. Expressed in many, but not all, epithelial tumors of lung, breast, kidney, ovary, prostate and colon. In hepatocellular carcinomas, expressed in tumor cells but not in surrounding non-cancerous tissue.

Involvement in disease

Genetic variations in MICA are a cause of susceptibility to rheumatoid arthritis (RA) [MIM:180300]. It is a systemic inflammatory disease with autoimmune features and a complex genetic component. It primarily affects the joints and is characterized by inflammatory changes in the synovial membranes and articular structures, widespread fibrinoid degeneration of the collagen fibers in mesenchymal tissues, and by atrophy and rarefaction of bony structures.

Note=The MICB*004 allele is associated with rheumatoid arthritis.

Note=Genetic variation in MICB is associated with cytomegalovirus and herpes simplex virus I seropositivity and this may be associated with schizophrenia risk.

Sequence similarities

Belongs to the MHC class I family. MIC subfamily.

Contains 1 Ig-like C1-type (immunoglobulin-like) domain.

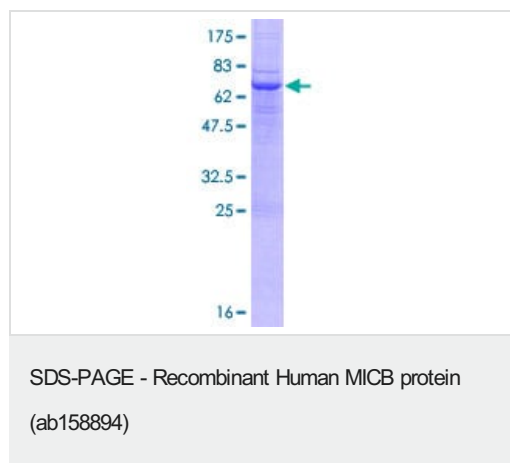
Post-translational modifications

Proteolytically cleaved and released from the cell surface of tumor cells.

Cellular localization

Cell membrane. Binding to human cytomegalovirus glycoprotein UL16 causes sequestration in the endoplasmic reticulum.

Images



ab158894 on a 12.5% SDS-PAGE stained with Coomassie Blue.

Our Abpromise to you: Quality guaranteed and expert technical support

- Replacement or refund for products not performing as stated on the datasheet
- Valid for 12 months from date of delivery
- Response to your inquiry within 24 hours

- We provide support in Chinese, English, French, German, Japanese and Spanish
- Extensive multi-media technical resources to help you
- We investigate all quality concerns to ensure our products perform to the highest standards

If the product does not perform as described on this datasheet, we will offer a refund or replacement. For full details of the Abpromise, please visit <https://www.abcam.com/abpromise> or contact our technical team.

Terms and conditions

- Guarantee only valid for products bought direct from Abcam or one of our authorized distributors