

Product datasheet

Recombinant Human MIP-3 beta/CCL19 protein ab97899

[1 Image](#)

Description

Product name	Recombinant Human MIP-3 beta/CCL19 protein
Purity	> 95 % SDS-PAGE. ab97899 is purified by conventional chromatography, after refolding of the isolated inclusion bodies in a renaturation buffer.
Endotoxin level	< 1.000 Eu/μg
Expression system	Escherichia coli
Accession	<u>Q99731</u>
Protein length	Full length protein
Animal free	No
Nature	Recombinant
Species	Human
Sequence	<i>MASMTGGQQM GRGSHMG</i> TND AEDCCLSVTQ KPIPGYIVRN FHYLLIKDGC RVPVVFTTL RGRQLCAPPD QPWVERIIQR LQRTSAKMKR RSS
Predicted molecular weight	10 kDa including tags
Amino acids	22 to 98
Tags	T7 tag N-Terminus

Specifications

Our **Abpromise guarantee** covers the use of **ab97899** in the following tested applications.

The application notes include recommended starting dilutions; optimal dilutions/concentrations should be determined by the end user.

Applications	SDS-PAGE Mass Spectrometry
Mass spectrometry	MALDI-TOF-TOF
Form	Liquid
Additional notes	This product was previously labelled as Macrophage Inflammatory Protein 3 beta

Preparation and Storage

Stability and Storage

Shipped at 4°C. Upon delivery aliquot and store at -20°C or -80°C. Avoid repeated freeze / thaw cycles.

pH: 7.40

Constituents: PBS, 10% Glycerol (glycerin, glycerine)

General Info

Function

May play a role not only in inflammatory and immunological responses but also in normal lymphocyte recirculation and homing. May play an important role in trafficking of T-cells in thymus, and T-cell and B-cell migration to secondary lymphoid organs. Specifically binds to chemokine receptor CCR7. Recombinant CCL19 shows potent chemotactic activity for T-cells and B-cells but not for granulocytes and monocytes.

Tissue specificity

Expressed at high levels in the lymph nodes, thymus and appendix. Intermediate levels seen in colon and trachea, while low levels found in spleen, small intestine, lung, kidney and stomach.

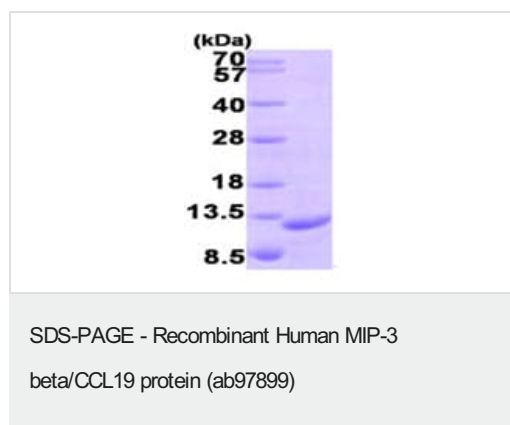
Sequence similarities

Belongs to the intercrine beta (chemokine CC) family.

Cellular localization

Secreted.

Images



15% SDS-PAGE showing ab97899 at approximately 10.4kDa (3µg).

Please note: All products are "FOR RESEARCH USE ONLY. NOT FOR USE IN DIAGNOSTIC PROCEDURES"

Our Abpromise to you: Quality guaranteed and expert technical support

- Replacement or refund for products not performing as stated on the datasheet
- Valid for 12 months from date of delivery
- Response to your inquiry within 24 hours
- We provide support in Chinese, English, French, German, Japanese and Spanish
- Extensive multi-media technical resources to help you
- We investigate all quality concerns to ensure our products perform to the highest standards

If the product does not perform as described on this datasheet, we will offer a refund or replacement. For full details of the Abpromise, please visit <https://www.abcam.com/abpromise> or contact our technical team.

Terms and conditions

- Guarantee only valid for products bought direct from Abcam or one of our authorized distributors