

Recombinant Human MKP-1 protein ab114331

1 References 1 Image

Description

Product name	Recombinant Human MKP-1 protein
Expression system	Wheat germ
Accession	<u>P28562</u>
Protein length	Full length protein
Animal free	No
Nature	Recombinant
Species	Human
Sequence	MVMEVGTLDA GGLRALLGER AAQCLLLDCR SFFAFNAGHI AGSVNVRFST MRRRAKGAM GLEHVPNAE LRGRLLAGAY HAVVLLDERS AALDGAKRDG TLALAAGALC REARAAQVFF LKGGYEAFFSA SCPELCSKQS TPMGLSLPLS TSVPDSAESG CSSCSTPLYD QGGPVEILPF LYLGSAHAS RKDMLDALGITALINVSANC PNHFEHGYQY KSIPVEDNHK ADISSWFNEA IDFIDSIKNA GGRVFEVHCQA GISRSATICL AYLMRTNRVK LDEAFEFVKQ RRSIISP NFS FMGQLLQFES QVLAPHCSAE AGSPAMAVLD RGTSTTTVFN FVPSIPVHST NSALSYLQSP ITTSPSC
Predicted molecular weight	66 kDa including tags
Amino acids	1 to 367

Specifications

Our **Abpromise guarantee** covers the use of **ab114331** in the following tested applications.

The application notes include recommended starting dilutions; optimal dilutions/concentrations should be determined by the end user.

Applications	SDS-PAGE Western blot ELISA
Form	Liquid

Preparation and Storage

Stability and Storage

Shipped on dry ice. Upon delivery aliquot and store at -80°C. Avoid freeze / thaw cycles.

pH: 8.00

Constituents: 0.3% Glutathione, 0.79% Tris HCl

General Info

Function

Dual specificity phosphatase that dephosphorylates MAP kinase ERK2 on both 'Thr-183' and 'Tyr-185'.

Tissue specificity

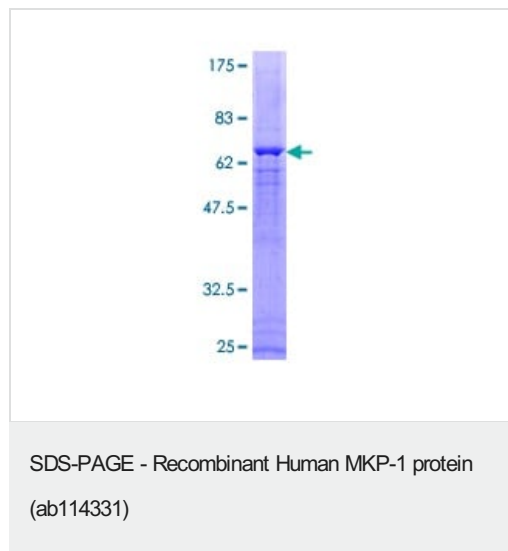
Expressed at high levels in the lung, liver placenta and pancreas. Moderate levels seen in the heart and skeletal muscle. Lower levels found in the brain and kidney.

Sequence similarities

Belongs to the protein-tyrosine phosphatase family. Non-receptor class dual specificity subfamily. Contains 1 rhodanese domain.

Contains 1 tyrosine-protein phosphatase domain.

Images



ab114331 analysed on a 12.5% SDS-PAGE gel stained with Coomassie Blue

Please note: All products are "FOR RESEARCH USE ONLY. NOT FOR USE IN DIAGNOSTIC PROCEDURES"

Our Abpromise to you: Quality guaranteed and expert technical support

- Replacement or refund for products not performing as stated on the datasheet
- Valid for 12 months from date of delivery
- Response to your inquiry within 24 hours
- We provide support in Chinese, English, French, German, Japanese and Spanish
- Extensive multi-media technical resources to help you
- We investigate all quality concerns to ensure our products perform to the highest standards

If the product does not perform as described on this datasheet, we will offer a refund or replacement. For full details of the Abpromise, please visit <https://www.abcam.com/abpromise> or contact our technical team.

Terms and conditions

- Guarantee only valid for products bought direct from Abcam or one of our authorized distributors