

Product datasheet

Recombinant Human MORC3 protein (Tagged)  
ab225648

1 Image

Description	
Product name	Recombinant Human MORC3 protein (Tagged)
Purity	> 90 % SDS-PAGE.
Expression system	Escherichia coli
Accession	<u>Q14149</u>
Protein length	Protein fragment
Animal free	No
Nature	Recombinant
Species	Human
Sequence	MAAQPPRGIRLSALCPKFLHTNSTSHTWPFSVAEIDNA YDPDVNAKQI WIDKTVINDHICLTFTDNGNGMTSDKLHKMLSFSGFSDKVT MNGHVPVGLY GNGFKSGSMRLGKDAMFTKNGESMSVGLLSQTYLEVIKA EHVVVPVAF NKHQRMNLAESKASLAAILEHSLFSTEQKLLAELDAIIGKK GTRIIIVN LRSYKNATEFD FEKDKYDIRIPEDLDEITGKKGYKKQERMD QIAPESDYS LRAYCSILYLKPRMQIILRGQKVKTQLVSKSLAYIERDVY
Predicted molecular weight	49 kDa including tags
Amino acids	1 to 290
Tags	His tag N-Terminus
Additional sequence information	N-terminal 6xHis-SUMO tag.

Specifications	
Our <b>Abpromise guarantee</b> covers the use of <b>ab225648</b> in the following tested applications.	
The application notes include recommended starting dilutions; optimal dilutions/concentrations should be determined by the end user.	
Applications	SDS-PAGE

**Form** Liquid

## Preparation and Storage

### Stability and Storage

Shipped at 4°C. Upon delivery aliquot. Store at -20°C or -80°C. Avoid freeze / thaw cycle.

pH: 7.2

Constituents: 50% Glycerol (glycerin, glycerine), Tris buffer

## General Info

### Function

Nuclear factor which forms MORC3-NBs (nuclear bodies) via an ATP-dependent mechanism (PubMed:20501696). Sumoylated MORC3-NBs can also associate with PML-NBs (PubMed:20501696). Recruits TP53 and SP100 to PML-NBs, thus regulating TP53 activity (PubMed:17332504). Binds RNA in vitro (PubMed:11927593). May be required for influenza A transcription during viral infection (PubMed:26202233).

### Tissue specificity

Expressed in heart, placenta, skeletal muscle, brain, pancreas, lung, liver, but not kidney.

### Sequence similarities

Contains 1 CW-type zinc finger.

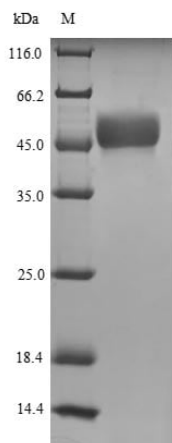
### Post-translational modifications

Sumoylation is involved in interaction with PML and localization to PML nuclear bodies.

### Cellular localization

Nucleus, nucleoplasm. Nucleus matrix. Nucleus, PML body. Also found in PML-independent nuclear bodies. Localization to nuclear bodies is ATP-dependent.

## Images



SDS-PAGE - Recombinant Human MORC3 protein  
(Tagged) (ab225648)

Discontinuous SDS-PAGE (Tris-Glycine gel) (reduced) with 5% enrichment gel and 15% separation gel.

**Please note:** All products are "FOR RESEARCH USE ONLY. NOT FOR USE IN DIAGNOSTIC PROCEDURES"

**Our Abpromise to you: Quality guaranteed and expert technical support**

- Replacement or refund for products not performing as stated on the datasheet
- Valid for 12 months from date of delivery
- Response to your inquiry within 24 hours
- We provide support in Chinese, English, French, German, Japanese and Spanish
- Extensive multi-media technical resources to help you
- We investigate all quality concerns to ensure our products perform to the highest standards

If the product does not perform as described on this datasheet, we will offer a refund or replacement. For full details of the Abpromise, please visit <https://www.abcam.com/abpromise> or contact our technical team.

#### **Terms and conditions**

---

- Guarantee only valid for products bought direct from Abcam or one of our authorized distributors