

Product datasheet

Recombinant Human MYL12A protein ab113139

1 Image

Description

Product name	Recombinant Human MYL12A protein
Purity	> 90 % SDS-PAGE. ab113139 was purified using conventional chromatography.
Expression system	Escherichia coli
Accession	<u>P19105</u>
Protein length	Full length protein
Animal free	No
Nature	Recombinant
Species	Human
Sequence	MGSSHHHHHHSSGLVPRGSHMGSHMSSKRTKTKTKKR PQRATSNVFAMFD QSQIQEFKEAFNMIDQNR DGFIDKEDLHDMLASLGKNPTDEYLDAMMN EAPGPINFTMFLTMFGEKLNQDPEDVIRNAFACFDEEAT GTIQE DYL RELLTTMGDRFTDEEVDELYREAPIDKKGNFNIEFTRILKH GAKDKDD
Predicted molecular weight	22 kDa including tags
Amino acids	1 to 171
Tags	His tag N-Terminus

Specifications

Our **Abpromise guarantee** covers the use of **ab113139** in the following tested applications.

The application notes include recommended starting dilutions; optimal dilutions/concentrations should be determined by the end user.

Applications	SDS-PAGE Functional Studies
Mass spectrometry	MALDI-TOF
Form	Liquid
Additional notes	Previously labelled as MRCL3.

Preparation and Storage

Preparation and Storage

Stability and Storage

Shipped at 4°C. Store at +4°C short term (1-2 weeks). Upon delivery aliquot. Store at -20°C or -80°C. Avoid freeze / thaw cycle.

pH: 8.00

Constituents: 0.02% DTT, 0.32% Tris HCl, 20% Glycerol (glycerin, glycerine)

General Info

Function

Myosin regulatory subunit that plays an important role in regulation of both smooth muscle and nonmuscle cell contractile activity via its phosphorylation. Implicated in cytokinesis, receptor capping, and cell locomotion.

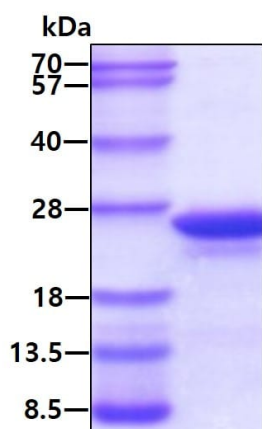
Sequence similarities

Contains 3 EF-hand domains.

Post-translational modifications

Phosphorylation increases the actin-activated myosin ATPase activity and thereby regulates the contractile activity. It is required to generate the driving force in the migration of the cells but not necessary for localization of myosin-2 at the leading edge.

Images



15% SDS-PAGE analysis of ab113139 (3µg)

SDS-PAGE - Recombinant Human MYL12A protein
(ab113139)

Please note: All products are "FOR RESEARCH USE ONLY. NOT FOR USE IN DIAGNOSTIC PROCEDURES"

Our Abpromise to you: Quality guaranteed and expert technical support

- Replacement or refund for products not performing as stated on the datasheet
- Valid for 12 months from date of delivery
- Response to your inquiry within 24 hours
- We provide support in Chinese, English, French, German, Japanese and Spanish
- Extensive multi-media technical resources to help you

- We investigate all quality concerns to ensure our products perform to the highest standards

If the product does not perform as described on this datasheet, we will offer a refund or replacement. For full details of the Abpromise, please visit <https://www.abcam.com/abpromise> or contact our technical team.

Terms and conditions

- Guarantee only valid for products bought direct from Abcam or one of our authorized distributors