

Recombinant human MYLK2 protein ab84800

5 Images

Description

Product name	Recombinant human MYLK2 protein
Biological activity	Specific activity: 270nmol/min/mg.
Purity	> 75 % Densitometry. Affinity purified.
Expression system	Baculovirus infected Sf9 cells
Protein length	Full length protein
Animal free	No
Nature	Recombinant
Species	Human
Tags	His tag N-Terminus

Specifications

Our **Abpromise guarantee** covers the use of **ab84800** in the following tested applications.

The application notes include recommended starting dilutions; optimal dilutions/concentrations should be determined by the end user.

Applications	Western blot Functional Studies
Form	Liquid
Additional notes	ab60014 (Mouse MYL9 full length protein) can be utilized as a substrate for assessing Kinase activity

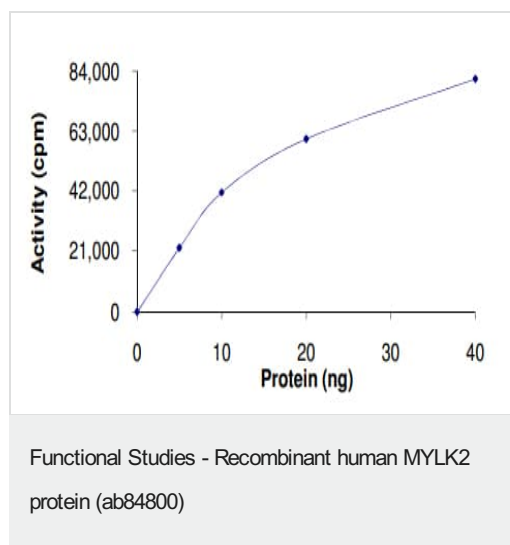
Preparation and Storage

Stability and Storage	Shipped on dry ice. Upon delivery aliquot and store at -80°C. Avoid freeze / thaw cycles. pH: 7.00 Preservative: 1.02% Imidazole Constituents: 0.00174% PMSF, 0.82% Sodium phosphate, 0.00308% DTT, 25% Glycerol (glycerin, glycerine), 1.74% Sodium chloride This product is an active protein and may elicit a biological response in vivo, handle with caution.
------------------------------	--

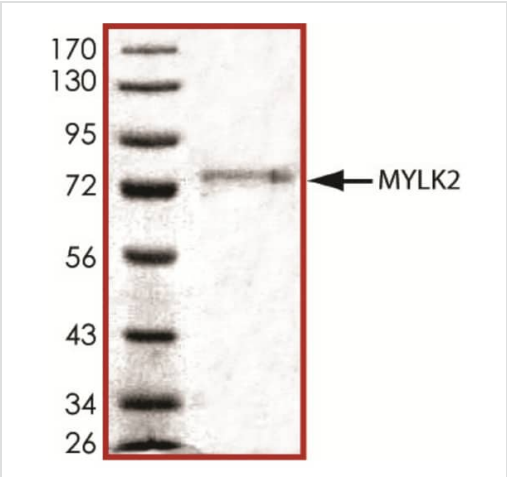
General Info

Function	Implicated in the level of global muscle contraction and cardiac function. Phosphorylates a specific serine in the N-terminus of a myosin light chain.
Tissue specificity	Heart and skeletal muscles. Increased expression in the apical tissue compared to the interventricular septal tissue.
Involvement in disease	Defects in MYLK2 are a cause of familial hypertrophic cardiomyopathy (CMH) [MIM:192600]; also designated FHC or HCM. Familial hypertrophic cardiomyopathy is a hereditary heart disorder characterized by ventricular hypertrophy, which is usually asymmetric and often involves the interventricular septum. The symptoms include dyspnea, syncope, collapse, palpitations, and chest pain. They can be readily provoked by exercise. The disorder has inter- and intrafamilial variability ranging from benign to malignant forms with high risk of cardiac failure and sudden cardiac death.
Sequence similarities	Belongs to the protein kinase superfamily. CAMK Ser/Thr protein kinase family. Contains 1 protein kinase domain.
Cellular localization	Cytoplasm. Colocalizes with phosphorylated myosin light chain (RLCP) at filaments of the myofibrils.

Images

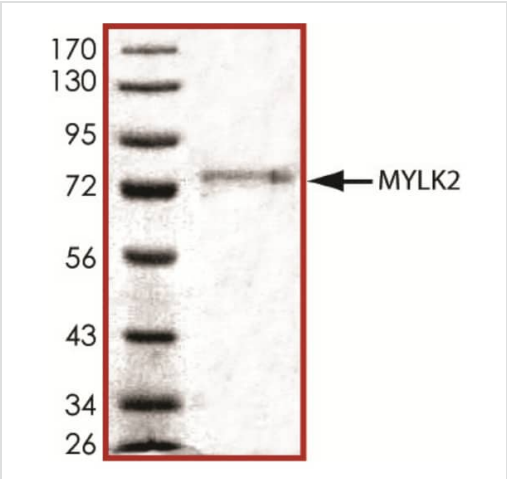


The specific activity of MYLK2 (ab84800) was determined to be 238 nmol/min/mg as per activity assay protocol



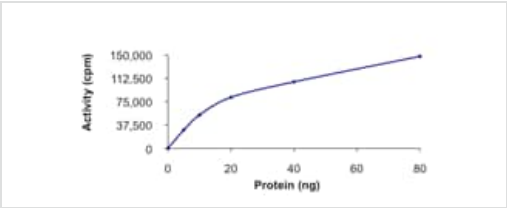
SDS PAGE analysis of ab84800

SDS-PAGE - Recombinant human MYLK2 protein (ab84800)



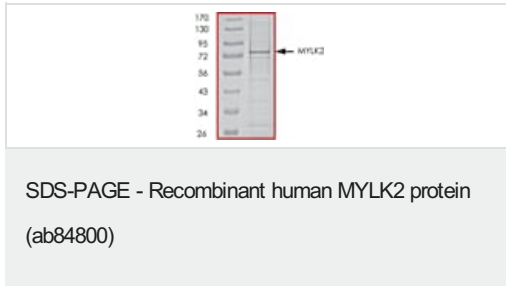
SDS PAGE analysis of ab84800

SDS-PAGE - Recombinant human MYLK2 protein (ab84800)



Specific activity of ab84800

Functional Studies - Recombinant human MYLK2 protein (ab84800)



SDS page analysis of ab84800

Please note: All products are "FOR RESEARCH USE ONLY. NOT FOR USE IN DIAGNOSTIC PROCEDURES"

Our Abpromise to you: Quality guaranteed and expert technical support

- Replacement or refund for products not performing as stated on the datasheet
- Valid for 12 months from date of delivery
- Response to your inquiry within 24 hours
- We provide support in Chinese, English, French, German, Japanese and Spanish
- Extensive multi-media technical resources to help you
- We investigate all quality concerns to ensure our products perform to the highest standards

If the product does not perform as described on this datasheet, we will offer a refund or replacement. For full details of the Abpromise, please visit <https://www.abcam.com/abpromise> or contact our technical team.

Terms and conditions

- Guarantee only valid for products bought direct from Abcam or one of our authorized distributors