

## Product datasheet

# Recombinant human MYLK3/MLCK protein ab84799

5 Images

### Description

---

|                            |  |
|----------------------------|--|
| <b>Product name</b>        | Recombinant human MYLK3/MLCK protein       |
| <b>Biological activity</b> | Specific activity: 9nmol/min/mg.           |
| <b>Purity</b>              | > 75 % Densitometry.<br>Affinity purified. |
| <b>Expression system</b>   | Baculovirus infected Sf9 cells             |
| <b>Protein length</b>      | Full length protein                        |
| <b>Animal free</b>         | No   |
| <b>Nature</b>              | Recombinant                                |
| <b>Species</b>             | Human                                      |
| <b>Tags</b>                | GST tag N-Terminus                         |

### Specifications

---

Our **Abpromise guarantee** covers the use of **ab84799** in the following tested applications.

The application notes include recommended starting dilutions; optimal dilutions/concentrations should be determined by the end user.

|                         |  |
|-------------------------|--|
| <b>Applications</b>     | Western blot<br>Functional Studies   |
| <b>Form</b>             | Liquid   |
| <b>Additional notes</b> | <b>ab60014</b> (Mouse MYL9 full length protein) can be utilized as a substrate for assessing Kinase activity<br>Protein previously labeled as MYLK3. |

### Preparation and Storage

---

|                              |  |
|------------------------------|--|
| <b>Stability and Storage</b> | Shipped on dry ice. Upon delivery aliquot and store at -80°C. Avoid freeze / thaw cycles.<br>pH: 7.50<br>Constituents: 0.0038% EGTA, 0.00174% PMSF, 0.00385% DTT, 0.79% Tris HCl, 0.00292% EDTA, 25% Glycerol (glycerin, glycerine), 0.87% Sodium chloride<br>This product is an active protein and may elicit a biological response in vivo, handle with caution. |
|------------------------------|--|

## General Info

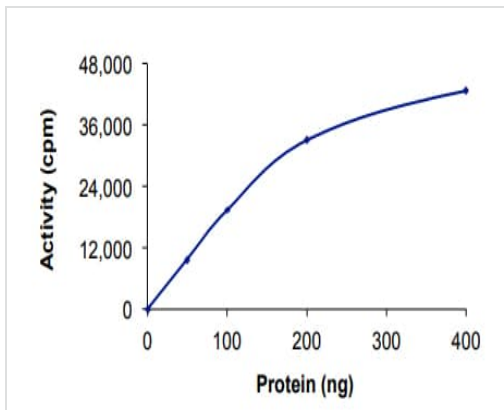
### Function

May play a role in smooth muscle contraction.

### Sequence similarities

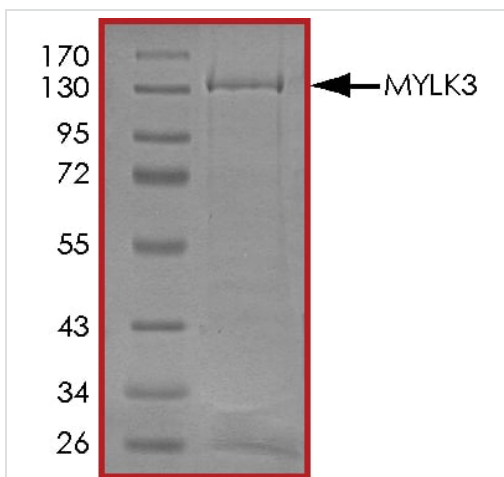
Belongs to the protein kinase superfamily. CAMK Ser/Thr protein kinase family.  
Contains 1 protein kinase domain.

## Images



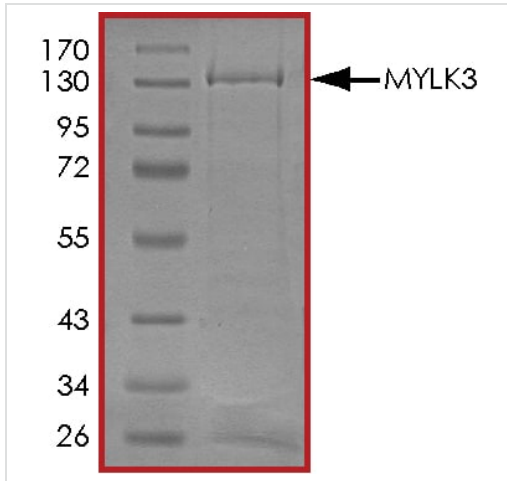
The specific activity of MYLK3/MLCK (ab84799) was determined to be 11 nmol/min/mg as per activity assay protocol

Functional Studies - Recombinant human  
MYLK3/MLCK protein (ab84799)



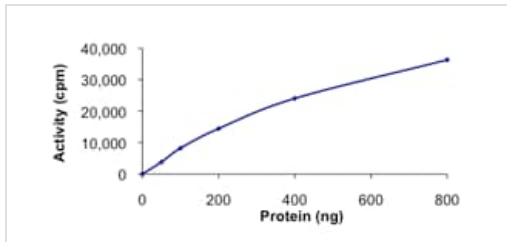
SDS PAGE analysis of ab84799

SDS-PAGE - Recombinant human MYLK3/MLCK  
protein (ab84799)



SDS PAGE analysis of ab84799

SDS-PAGE - Recombinant human MYLK3/MLCK protein (ab84799)



Specific activity of ab84799

Functional Studies - Recombinant human MYLK3/MLCK protein (ab84799)



SDS Page analysis of ab84799

SDS-PAGE - Recombinant human MYLK3/MLCK protein (ab84799)

**Please note:** All products are "FOR RESEARCH USE ONLY. NOT FOR USE IN DIAGNOSTIC PROCEDURES"

**Our Abpromise to you: Quality guaranteed and expert technical support**

- Replacement or refund for products not performing as stated on the datasheet
- Valid for 12 months from date of delivery

- Response to your inquiry within 24 hours
- We provide support in Chinese, English, French, German, Japanese and Spanish
- Extensive multi-media technical resources to help you
- We investigate all quality concerns to ensure our products perform to the highest standards

If the product does not perform as described on this datasheet, we will offer a refund or replacement. For full details of the Abpromise, please visit <https://www.abcam.com/abpromise> or contact our technical team.

### **Terms and conditions**

---

- Guarantee only valid for products bought direct from Abcam or one of our authorized distributors