

Recombinant Human N-ethylmaleimide-sensitive fusion protein ab132100

1 Image

Description	
Product name	Recombinant Human N-ethylmaleimide-sensitive fusion protein
Expression system	Wheat germ
Accession	<u>P46459</u>
Protein length	Full length protein
Animal free	No
Nature	Recombinant
Species	Human
Sequence	MAGRSMQAARCPTDELSLTNCAVVNEKDFQSGQHVVIRT SPNHRYTFTLK THPSVVPGSIAFSLPQRKWAGLSIGQEIEVSLYTFDKAKQC IGTMTIEID FLQKKSIDSNPYDTDKMAAEFIQQFNNQAFSVGQQLVFSF NEKLFGLLVK DIEAMDPSILKGEPATGKRQKIEVGLVVGNSQVAFEKAEN SSLNLIGKAK TKENRQSIINPDWNFEKMGIGGLDKEFSDIFRRAFASRVFP PEVEQMGC KHVKGILLYGPPGCGKTLARQIGKMLNAREPKVVNGPEIL NKYVGESEA NIRKLFADAEERRLGANSGLHIIIFDEIDAICKQRGSMAG STGVHDTV VNQLLSKIDGVEQLNNILVIGMTNRPDLIDEALLRPGRLEVK MEIGLPDE KGRLQILHIHTARMRGHQLLSADVDIKELAVETKNFSGAEL EGLVRAAQS TAMNRHIKASTKVEVDMEKAESLQVTRGDFLASLENDIKP AFGTNQEDYA SYMNGIIKWGDPVTRVLDDGELLVQQTKNSDRTPLVSVLL EGPPHSGKT ALAAKIAEESNFPFIKICSPDKMIGFSETAKCQAMKKIFDDA YKSQLSCV VVDDIERLLDYVPIGPRFSNLVLQALLVLLKKAPPQGRKLLII GTTSRKD

VLQEMEMLNAFSTTIHVPNIATGEQLLEALELLGNFKDKER
TTIAQQVKG
KKVWIGIKLLMLIEMSLQMDPEYRVRKFLALLREEGASPL
DFD

Predicted molecular weight 109 kDa including tags
Amino acids 1 to 744

Specifications

Our **Abpromise guarantee** covers the use of **ab132100** in the following tested applications.

The application notes include recommended starting dilutions; optimal dilutions/concentrations should be determined by the end user.

Applications Western blot
SDS-PAGE
ELISA

Form Liquid

Additional notes This product was previously labelled as NSF.

Preparation and Storage

Stability and Storage Shipped on dry ice. Upon delivery aliquot and store at -80°C. Avoid freeze / thaw cycles.
pH: 8.00
Constituents: 0.31% Glutathione, 0.79% Tris HCl

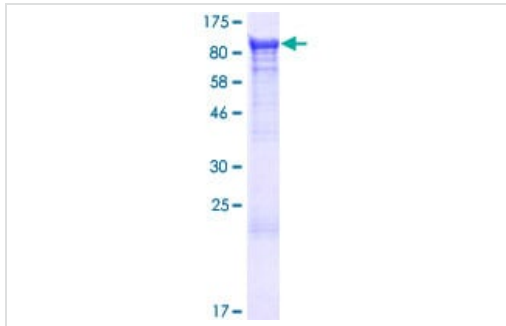
General Info

Function Required for vesicle-mediated transport. Catalyzes the fusion of transport vesicles within the Golgi cisternae. Is also required for transport from the endoplasmic reticulum to the Golgi stack. Seem to function as a fusion protein required for the delivery of cargo proteins to all compartments of the Golgi stack independent of vesicle origin.

Sequence similarities Belongs to the AAA ATPase family.

Cellular localization Cytoplasm.

Images



12.5% SDS-PAGE stained with Coomassie Blue showing
ab132100

SDS-PAGE - Recombinant Human N-
ethylmaleimide-sensitive fusion protein (ab132100)

Please note: All products are "FOR RESEARCH USE ONLY. NOT FOR USE IN DIAGNOSTIC PROCEDURES"

Our Abpromise to you: Quality guaranteed and expert technical support

- Replacement or refund for products not performing as stated on the datasheet
- Valid for 12 months from date of delivery
- Response to your inquiry within 24 hours
- We provide support in Chinese, English, French, German, Japanese and Spanish
- Extensive multi-media technical resources to help you
- We investigate all quality concerns to ensure our products perform to the highest standards

If the product does not perform as described on this datasheet, we will offer a refund or replacement. For full details of the Abpromise, please visit <https://www.abcam.com/abpromise> or contact our technical team.

Terms and conditions

- Guarantee only valid for products bought direct from Abcam or one of our authorized distributors