

Recombinant human NEK8 protein ab204141

5 Images

Description

Product name	Recombinant human NEK8 protein
Biological activity	The specific activity of ab204141 was determined to be 5 nmol /min/mg as per activity assay protocol.
Purity	> 75 % SDS-PAGE. Assessed by densitometry. Affinity purified.
Expression system	Baculovirus infected Sf9 cells
Accession	<b><u>Q86SG6</u></b>
Protein length	Protein fragment
Animal free	No
Nature	Recombinant
Species	Human
Sequence	MEKYERIRVVGRGAFGIVHLCRLKADQKLVIKQIPVEQMTK EERQAAQN ECQVLKLLNHPNVIEYYENFLEDKALMIAMEYAPGGTLAEFI QKRCNSLL EEETILHFFVQILLALHHVHTLILHRDLKTQNILLDKHRMVV KIGDFGI SKILSSSKAYTVVGTPCYISPELCEGKPYNQKSDIWALGC VLYELASLK RAFEAANLPALVLKIMSGTFAPISDRYSPELRQLVLSLLSL EPAQRPPLS HIMAQPLCIRALLNLHTDVGSVRMRRAEKSVAPSNTGSRT TSVRCRGIPR GPVRPAIPPLSSVYAWGGGLG
Predicted molecular weight	66 kDa including tags
Amino acids	1 to 322
Tags	GST tag N-Terminus

Specifications

Our **Abpromise guarantee** covers the use of **ab204141** in the following tested applications.

The application notes include recommended starting dilutions; optimal dilutions/concentrations should be determined by the end user.

**Applications** Functional Studies

## SDS-PAGE

<b>Form</b>	Liquid
<b>Additional notes</b>	<b>ab64311</b> (Myelin Basic Protein protein) can be utilized as a substrate for assessing kinase activity

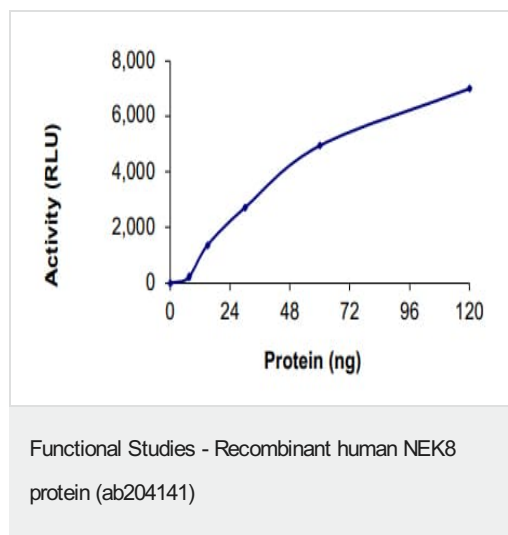
## Preparation and Storage

<b>Stability and Storage</b>	Shipped on Dry Ice. Upon delivery aliquot. Store at -80°C. Avoid freeze / thaw cycle. pH: 7.50 Constituents: 0.79% Tris HCl, 0.87% Sodium chloride, 0.31% Glutathione, 0.003% EDTA, 0.004% DTT, 0.002% PMSF, 25% Glycerol (glycerin, glycerine) This product is an active protein and may elicit a biological response in vivo, handle with caution.
------------------------------	---

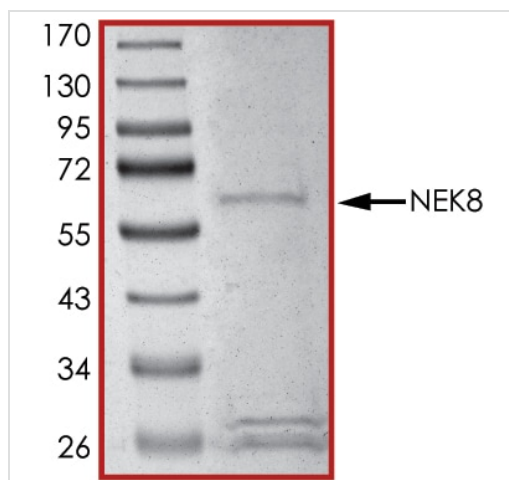
## General Info

<b>Function</b>	Required for renal tubular integrity.
<b>Tissue specificity</b>	Highest expression in thyroid, adrenal gland and skin. Low levels in spleen, colon and uterus. Overexpressed in breast tumors, with highest expression in infiltrating ductal carcinomas and moderate levels in mucinous adenocarcinoma.
<b>Sequence similarities</b>	Belongs to the protein kinase superfamily. NEK Ser/Thr protein kinase family. NIMA subfamily. Contains 1 protein kinase domain. Contains 5 RCC1 repeats.
<b>Cellular localization</b>	Cytoplasm. Predominantly cytoplasmic.

## Images

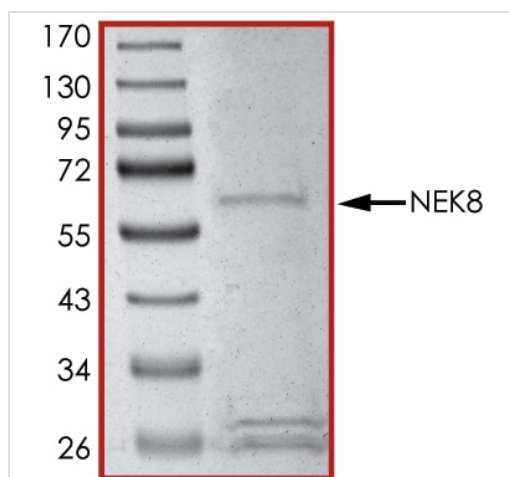


The specific activity of NEK8 (ab204141) was determined to be 1.8 nmol/min/mg as per activity assay protocol and was equivalent to 5 nmol/min/mg as per radiometric assay



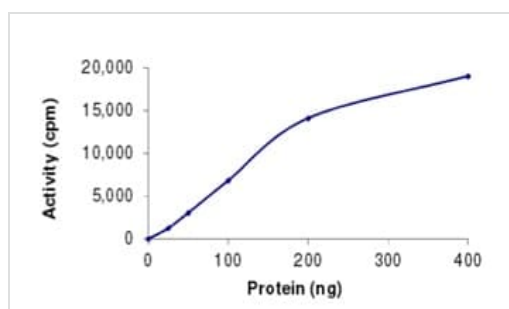
SDS PAGE analysis of ab204141

SDS-PAGE - Recombinant human NEK8 protein  
(ab204141)



SDS PAGE analysis of ab204141

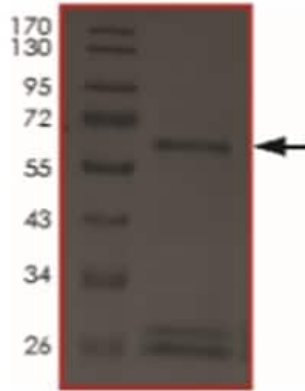
SDS-PAGE - Recombinant human NEK8 protein  
(ab204141)



Sample Kinase Activity Plot showing ab204141. The specific activity of NEK8 was determined to be 5 nmol /min/mg as per activity assay protocol.

Functional Studies - Recombinant human NEK8  
protein (ab204141)

SDS-PAGE showing ab204141.



SDS-PAGE - Recombinant human NEK8 protein  
(ab204141)

**Please note:** All products are "FOR RESEARCH USE ONLY. NOT FOR USE IN DIAGNOSTIC PROCEDURES"

#### Our Abpromise to you: Quality guaranteed and expert technical support

---

- Replacement or refund for products not performing as stated on the datasheet
- Valid for 12 months from date of delivery
- Response to your inquiry within 24 hours
- We provide support in Chinese, English, French, German, Japanese and Spanish
- Extensive multi-media technical resources to help you
- We investigate all quality concerns to ensure our products perform to the highest standards

If the product does not perform as described on this datasheet, we will offer a refund or replacement. For full details of the Abpromise, please visit <https://www.abcam.com/abpromise> or contact our technical team.

#### Terms and conditions

---

- Guarantee only valid for products bought direct from Abcam or one of our authorized distributors