

Product datasheet

Recombinant Human Nicotinic Acetylcholine Receptor alpha 3/CHRNA3 protein ab158115

1 Image

Description

| | |
|-------------------|--|
| Product name | Recombinant Human Nicotinic Acetylcholine Receptor alpha 3/CHRNA3 protein |
| Expression system | Wheat germ |
| Protein length | Full length protein |
| Animal free | No |
| Nature | Recombinant |
| Species | Human |
| Sequence | MGSGPLSLPLALSPPRLLLLLLLSLLPVARASEAEHRLFELFEDYNEII RPVANVSDPVIIHFEVSMSQLVKVDEVNQIMETNLWLKQIWNDYKLKWNP SDYGGAEFMRVPAQKIWKPDIVLYNNAVGFQVDDKTKALLKYTGEVTWI PPAIFKSSCKIDVTYFPFDYQNCTMKFGSWSYDKAKIDLVLIGSSMNLKD YWESGEWAIKAPGYKHDIKYNCCIEYDPDITYSLYIRRLPLFYTNLII PCLLISFLTVLVFYLPSDCGEKVTLCSVLLSLTVFLLVITETIPSTSLV IPLIGEYLLFTMIFVTLNITVFLNVHYRTPTTHTMPSWVKTVFLNLL PRVMFMTRPTSNEGNAQKPRPLYGAELSNLNCFSRAESKGCKEGYPCQDG MCGYCHHRIKISNFSANLTRSSSESVDVLSLSALSPEIKEAIQSVKY IAENMKAQNEAKEEQKAQEIQQLKRKEKSTETSDQEPGL |
| Amino acids | 1 to 489 |
| Tags | GST tag N-Terminus |

Specifications

Our **Abpromise guarantee** covers the use of **ab158115** in the following tested applications.

The application notes include recommended starting dilutions; optimal dilutions/concentrations should be determined by the end user.

| | |
|-------------------------|---|
| Applications | ELISA |
| | Western blot |
| Form | Liquid |
| Additional notes | This product was previously labelled as Nicotinic Acetylcholine Receptor alpha 3. |

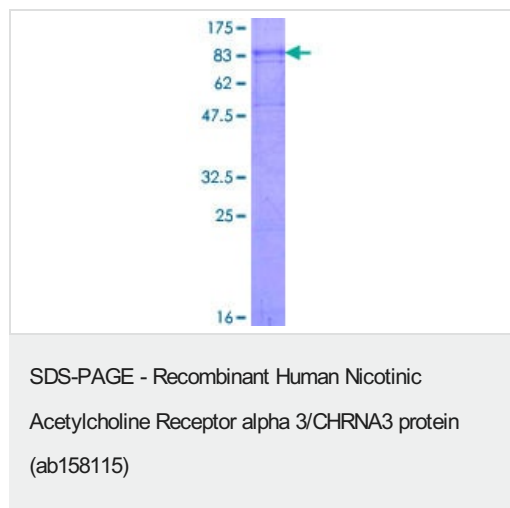
Preparation and Storage

| | |
|------------------------------|--|
| Stability and Storage | Shipped on dry ice. Upon delivery aliquot and store at -80°C. Avoid freeze / thaw cycles. pH: 8.00 Constituents: 0.31% Glutathione, 0.79% Tris HCl |
|------------------------------|--|

General Info

| | |
|------------------------------|---|
| Function | After binding acetylcholine, the AChR responds by an extensive change in conformation that affects all subunits and leads to opening of an ion-conducting channel across the plasma membrane. |
| Sequence similarities | Belongs to the ligand-gated ion channel (TC 1.A.9) family. Acetylcholine receptor (TC 1.A.9.1) subfamily. Alpha-3/CHRNA3 sub-subfamily. |
| Cellular localization | Cell junction > synapse > postsynaptic cell membrane. Cell membrane. |

Images



ab158115 on a 12.5% SDS-PAGE stained with Coomassie Blue.

Please note: All products are "FOR RESEARCH USE ONLY. NOT FOR USE IN DIAGNOSTIC PROCEDURES"

Our Abpromise to you: Quality guaranteed and expert technical support

- Replacement or refund for products not performing as stated on the datasheet
- Valid for 12 months from date of delivery

- Response to your inquiry within 24 hours
- We provide support in Chinese, English, French, German, Japanese and Spanish
- Extensive multi-media technical resources to help you
- We investigate all quality concerns to ensure our products perform to the highest standards

If the product does not perform as described on this datasheet, we will offer a refund or replacement. For full details of the Abpromise, please visit <https://www.abcam.com/abpromise> or contact our technical team.

Terms and conditions

- Guarantee only valid for products bought direct from Abcam or one of our authorized distributors