

## Product datasheet

# Recombinant Human nSMase protein ab114871

1 Image

### Description

<b>Product name</b>	Recombinant Human nSMase protein
<b>Expression system</b>	Wheat germ
<b>Accession</b>	<b><u>O60906</u></b>
<b>Protein length</b>	Full length protein
<b>Animal free</b>	No
<b>Nature</b>	Recombinant
<b>Species</b>	Human
<b>Sequence</b>	MKPNFSLRLRIFNLNCWGIPYLSKHRADRMRRRLGDFLNQE SFDLALLEEV WSEQDFQYLRQKLSPTYAAHHFRSGIIGSGLCVFSKHPIQ ELTQHITL NGYPYMIHGDWFSKGAVGLLVHLHLSGMVLNAYVTHLHAE YNRQKDIYA HRVAQAWELAQFIHHTSKKADVLLCGDLNMHPEDLGCC LLKEWTGLHDA YLETRDFKGSSEENTMVPKNCYVSQQELKPFPGVRIYV LYKAVSGFYI SCKSFETTTGFDPHSGTPLSDHEALMATLFVRHSPQQN PSSTHGPAERS PLMCVLKEAWTELGLGMAQARWWATFASVWIGLGLLLLA LLCVLAAGGGA GEAAILLWTPSVGLVLWAGAFYLFHVQEVNGLYRAQAELQ HVLGRAREAQ DLGPEPQPALLLGQQEGDRTKEQ
<b>Predicted molecular weight</b>	73 kDa including tags
<b>Amino acids</b>	1 to 423

### Specifications

Our **Abpromise guarantee** covers the use of **ab114871** in the following tested applications.

The application notes include recommended starting dilutions; optimal dilutions/concentrations should be determined by the end user.

<b>Applications</b>	ELISA
	SDS-PAGE

	Western blot
<b>Form</b>	Liquid

## Preparation and Storage

---

<b>Stability and Storage</b>	Shipped on dry ice. Upon delivery aliquot and store at -80°C. Avoid freeze / thaw cycles. pH: 8.00 Constituents: 0.3% Glutathione, 0.79% Tris HCl
------------------------------	---

## General Info

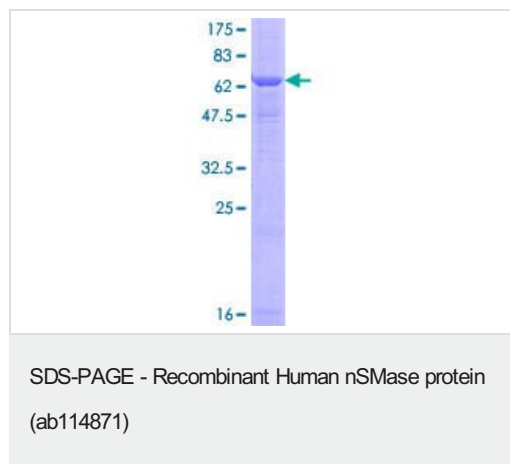
---

<b>Function</b>	Converts sphingomyelin to ceramide. Hydrolyze 1-acyl-2-lyso-sn-glycero-3-phosphocholine (lyso-PC) and 1-O-alkyl-2-lyso-sn-glycero-3-phosphocholine (lyso-platelet-activating factor). The physiological substrate seems to be Lyso-PAF.
<b>Sequence similarities</b>	Belongs to the neutral sphingomyelinase family.
<b>Cellular localization</b>	Membrane.

---

## Images

---



12.5% SDS-PAGE showing ab114871 at approximately 72.64kDa. Stained with Coomassie Blue.

**Please note:** All products are "FOR RESEARCH USE ONLY. NOT FOR USE IN DIAGNOSTIC PROCEDURES"

## Our Abpromise to you: Quality guaranteed and expert technical support

---

- Replacement or refund for products not performing as stated on the datasheet
- Valid for 12 months from date of delivery
- Response to your inquiry within 24 hours
- We provide support in Chinese, English, French, German, Japanese and Spanish
- Extensive multi-media technical resources to help you
- We investigate all quality concerns to ensure our products perform to the highest standards

If the product does not perform as described on this datasheet, we will offer a refund or replacement. For full details of the Abpromise,

please visit <https://www.abcam.com/abpromise> or contact our technical team.

## **Terms and conditions**

---

- Guarantee only valid for products bought direct from Abcam or one of our authorized distributors