

Product datasheet

Recombinant Human NSMase2 protein ab112416

[1 References](#) [1 Image](#)

Description

Product name	Recombinant Human NSMase2 protein
Biological activity	useful for Antibody Production and Protein Array
Expression system	Wheat germ
Accession	<u>Q9NY59</u>
Protein length	Full length protein
Animal free	No
Nature	Recombinant
Species	Human
Predicted molecular weight	98 kDa including tags
Amino acids	1 to 655

Specifications

Our [**Abpromise guarantee**](#) covers the use of **ab112416** in the following tested applications.

The application notes include recommended starting dilutions; optimal dilutions/concentrations should be determined by the end user.

Applications	SDS-PAGE Western blot ELISA
Form	Liquid
Additional notes	This product is useful for Antibody Production and Protein Array.

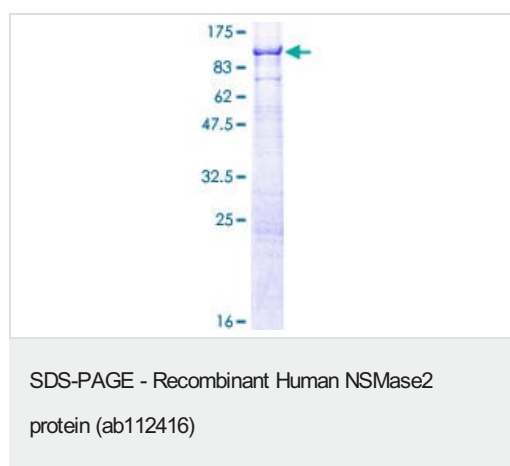
Preparation and Storage

Stability and Storage	Shipped on dry ice. Upon delivery aliquot and store at -80°C. Avoid freeze / thaw cycles. pH: 8.00 Constituents: 0.31% Glutathione, 0.79% Tris HCl (Glutathione is reduced)
------------------------------	--

General Info

Function	Catalyzes the hydrolysis of sphingomyelin to form ceramide and phosphocholine. Ceramide mediates numerous cellular functions, such as apoptosis and growth arrest, and is capable of regulating these 2 cellular events independently. Also hydrolyzes sphingosylphosphocholine. Regulates the cell cycle by acting as a growth suppressor in confluent cells. Probably acts as a regulator of postnatal development and participates in bone and dentin mineralization.
Tissue specificity	Predominantly expressed in brain.
Sequence similarities	Belongs to the neutral sphingomyelinase family.
Developmental stage	Up-regulated during G0/G1 phases.
Cellular localization	Golgi apparatus membrane. Cell membrane. May localize to detergent-resistant subdomains of Golgi membranes of hypothalamic neurosecretory neurons. According to PubMed:15051724, it localizes to plasma membrane in confluent contact-inhibited cells.

Images



12.5% SDS-PAGE stained with Coomassie Blue.

Please note: All products are "FOR RESEARCH USE ONLY. NOT FOR USE IN DIAGNOSTIC PROCEDURES"

Our Abpromise to you: Quality guaranteed and expert technical support

- Replacement or refund for products not performing as stated on the datasheet
- Valid for 12 months from date of delivery
- Response to your inquiry within 24 hours
- We provide support in Chinese, English, French, German, Japanese and Spanish
- Extensive multi-media technical resources to help you
- We investigate all quality concerns to ensure our products perform to the highest standards

If the product does not perform as described on this datasheet, we will offer a refund or replacement. For full details of the Abpromise, please visit <https://www.abcam.com/abpromise> or contact our technical team.

Terms and conditions

- Guarantee only valid for products bought direct from Abcam or one of our authorized distributors