

Recombinant Human OLFML3 protein ab163444

1 Image

Description

Product name	Recombinant Human OLFML3 protein
Expression system	Wheat germ
Protein length	Full length protein
Animal free	No
Nature	Recombinant
Species	Human
Sequence	MGPSTPLILFLLSWGPLQGQQHHLVEYMERRLAALEER LAQCQDQSSR HAAELRDFKNKMLPLLEVAEKEREALRTEADTISGRVDRL EREVDYLETQ NPALPCVEFDEKVTGGPGTKGKGRRNEKYDMVTDCGYTI SQVRSMKILKR FGGPAGLWTKDPLGQTEKIYVLDGTQNDTAFVFPRLRDFT LAMAARKASR VRVPFPWVGTLVYGGFLYFARRPPGRPGGGGEMENT LQLIKFHLANRT VVDSSVFPAEGLIPPYGLTADTYIDLAADDEGLWAVYATRE DDRHLCLAK LDPQTLDTQQWDTPCPRENAEAAFVICGTLVVYNTRPA SRARIQCSFD ASGTLTPERAALPYFPRRYGAHASLRYNPRERQLYAWDD GYQIVYKLEMR KKEEEV
Amino acids	1 to 406
Tags	GST tag N-Terminus

Specifications

Our **Abpromise guarantee** covers the use of **ab163444** in the following tested applications.

The application notes include recommended starting dilutions; optimal dilutions/concentrations should be determined by the end user.

Applications	Western blot
	ELISA
Form	Liquid

Additional notes

Preparation and Storage

Stability and Storage

Shipped on dry ice. Upon delivery aliquot and store at -80°C. Avoid freeze / thaw cycles.

pH: 8.00

Constituents: 0.31% Glutathione, 0.79% Tris HCl

General Info

Function

Secreted scaffold protein that plays an essential role in dorsoventral patterning during early development. Stabilizes axial formation by restricting chordin (CHRD) activity on the dorsal side. Acts by facilitating the association between the tolloid proteases and their substrate chordin (CHRD), leading to enhance chordin (CHRD) degradation (By similarity). May have matrix-related function involved in placental and embryonic development, or play a similar role in other physiological processes.

Tissue specificity

Abundant in placenta, moderate in liver and heart, whereas fairly weak in other tissues examined. On term placenta, mainly localized extracellularly surrounding the syncytiotrophoblastic cells and very rarely expressed in the maternal decidua layer.

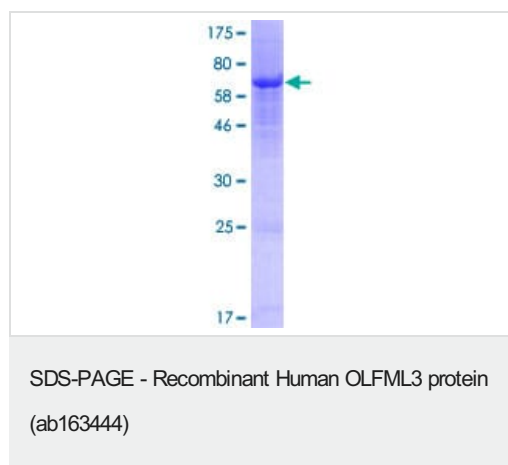
Sequence similarities

Belongs to the OLFML3 family.
Contains 1 olfactomedin-like domain.

Cellular localization

Secreted.

Images



ab163444 on a 12.5% SDS-PAGE stained with Coomassie Blue.

Please note: All products are "FOR RESEARCH USE ONLY. NOT FOR USE IN DIAGNOSTIC PROCEDURES"

Our Abpromise to you: Quality guaranteed and expert technical support

- Replacement or refund for products not performing as stated on the datasheet

- Valid for 12 months from date of delivery
- Response to your inquiry within 24 hours
- We provide support in Chinese, English, French, German, Japanese and Spanish
- Extensive multi-media technical resources to help you
- We investigate all quality concerns to ensure our products perform to the highest standards

If the product does not perform as described on this datasheet, we will offer a refund or replacement. For full details of the Abpromise, please visit <https://www.abcam.com/abpromise> or contact our technical team.

Terms and conditions

- Guarantee only valid for products bought direct from Abcam or one of our authorized distributors