

## Product datasheet

# Recombinant Human OSTM1 protein ab162184

1 Image

### Description

---

<b>Product name</b>	Recombinant Human OSTM1 protein
<b>Expression system</b>	Wheat germ
<b>Protein length</b>	Protein fragment
<b>Animal free</b>	No
<b>Nature</b>	Recombinant
<b>Species</b>	Human
<b>Sequence</b>	SNSTVYFLNLFNHTLTCFEHNLQGNAHSLQTKNYSEVCK NCREAYKTLS SLYSEMQKMNELENKAEPGTHLCIDVEDAMNITRKLWSRT FNCSVPCSDT
<b>Amino acids</b>	183 to 282
<b>Tags</b>	GST tag N-Terminus

### Specifications

---

Our **Abpromise guarantee** covers the use of **ab162184** in the following tested applications.

The application notes include recommended starting dilutions; optimal dilutions/concentrations should be determined by the end user.

<b>Applications</b>	ELISA Western blot
<b>Form</b>	Liquid
<b>Additional notes</b>	

### Preparation and Storage

---

<b>Stability and Storage</b>	Shipped on dry ice. Upon delivery aliquot and store at -80°C. Avoid freeze / thaw cycles. pH: 8.00 Constituents: 0.31% Glutathione, 0.79% Tris HCl
------------------------------	--

### General Info

## General info

---

### Function

Required for osteoclast and melanocyte maturation and function.

### Involvement in disease

Defects in OSTM1 are the cause of osteopetrosis autosomal recessive type 5 (OPTB5) [MIM:259720]; also called infantile malignant osteopetrosis 3. Osteopetrosis is a rare genetic disease characterized by abnormally dense bone, due to defective resorption of immature bone. The disorder occurs in two forms: a severe autosomal recessive form occurring in utero, infancy, or childhood, and a benign autosomal dominant form occurring in adolescence or adulthood. OPTB5 patients manifest primary central nervous system involvement in addition to the classical stigmata of severe bone sclerosis, growth failure, anemia, thrombocytopenia and visual impairment with optic atrophy.

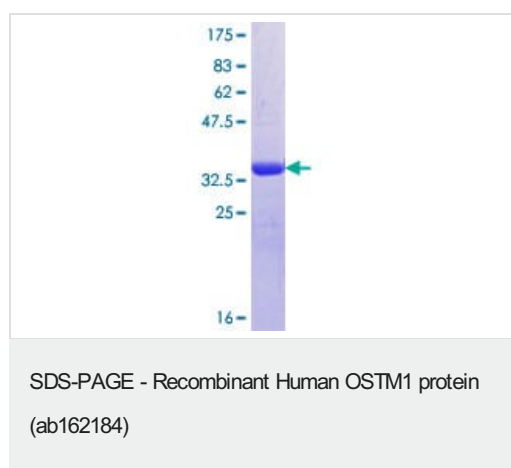
### Cellular localization

Membrane.

---

## Images

---



ab162184 on a 12.5% SDS-PAGE stained with Coomassie Blue.

**Please note:** All products are "FOR RESEARCH USE ONLY. NOT FOR USE IN DIAGNOSTIC PROCEDURES"

## Our Abpromise to you: Quality guaranteed and expert technical support

---

- Replacement or refund for products not performing as stated on the datasheet
- Valid for 12 months from date of delivery
- Response to your inquiry within 24 hours
- We provide support in Chinese, English, French, German, Japanese and Spanish
- Extensive multi-media technical resources to help you
- We investigate all quality concerns to ensure our products perform to the highest standards

If the product does not perform as described on this datasheet, we will offer a refund or replacement. For full details of the Abpromise, please visit <https://www.abcam.com/abpromise> or contact our technical team.

## Terms and conditions

---

- Guarantee only valid for products bought direct from Abcam or one of our authorized distributors