

Product datasheet

Recombinant human p38 delta/MAPK13 protein ab125643

[5 Images](#)

Description

Product name	Recombinant human p38 delta/MAPK13 protein
Biological activity	The specific activity of ab125643 was determined to be 120 nmol/min/mg as per activity assay protocol and equivalent to 151 nmol/min/mg as per radiometric assay
Purity	> 90 % Densitometry. Purity was determined to be >90% by densitometry. Affinity purified.
Expression system	Baculovirus infected Sf9 cells
Accession	<u>O15264</u>
Protein length	Full length protein
Animal free	No
Nature	Recombinant
Species	Human
Predicted molecular weight	71 kDa including tags
Amino acids	1 to 365

Specifications

Our **Abpromise guarantee** covers the use of **ab125643** in the following tested applications.

The application notes include recommended starting dilutions; optimal dilutions/concentrations should be determined by the end user.

Applications	Western blot Functional Studies SDS-PAGE
Form	Liquid

Preparation and Storage

Stability and Storage	Shipped on dry ice. Upon delivery aliquot and store at -80°C. Avoid freeze / thaw cycles. pH: 7.50 Constituents: 0.31% Glutathione, 0.002% PMSF, 0.004% DTT, 0.79% Tris HCl, 0.003% EDTA, 25% Glycerol (glycerin, glycerine), 0.88% Sodium chloride
------------------------------	---

This product is an active protein and may elicit a biological response in vivo, handle with caution.

General Info

Function

Responds to activation by environmental stress and pro-inflammatory cytokines by phosphorylating downstream targets. Plays a role in the regulation of protein translation by phosphorylating and inactivating EEF2K.

Tissue specificity

Expressed in testes, pancreas, small intestine, lung and kidney. Abundant in macrophages, also present in neutrophils, CD4+ T-cells, and endothelial cells.

Sequence similarities

Belongs to the protein kinase superfamily. CMGC Ser/Thr protein kinase family. MAP kinase subfamily.

Contains 1 protein kinase domain.

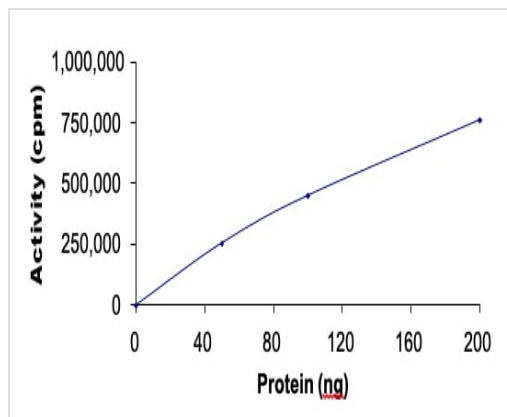
Domain

The TXY motif contains the threonine and tyrosine residues whose phosphorylation activates the MAP kinases.

Post-translational modifications

Dually phosphorylated on Thr-180 and Tyr-182, which activates the enzyme.

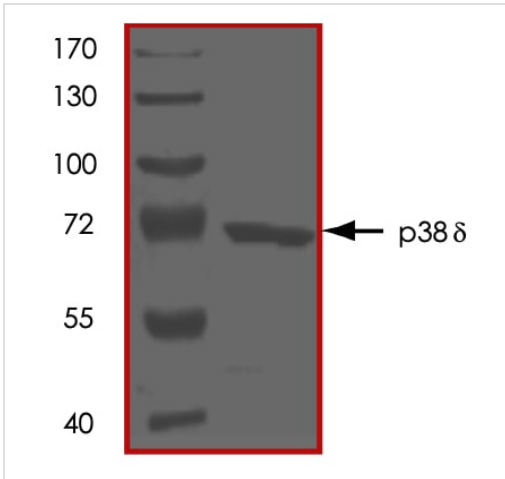
Images



The specific activity of MAPK 13 (ab125643) was determined to be 128 nmol/min/mg as per activity assay protocol and was equivalent to 161 nmol/min/mg as per radiometric assay

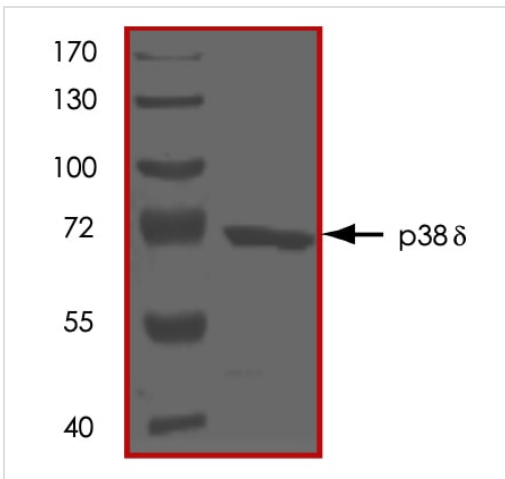
Functional Studies - Recombinant human p38
delta/MAPK13 protein (ab125643)

SDS PAGE analysis of ab125643



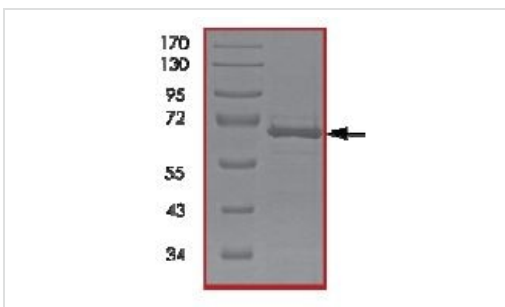
SDS-PAGE - Recombinant human p38 delta/MAPK13 protein (ab125643)

SDS PAGE analysis of ab125643

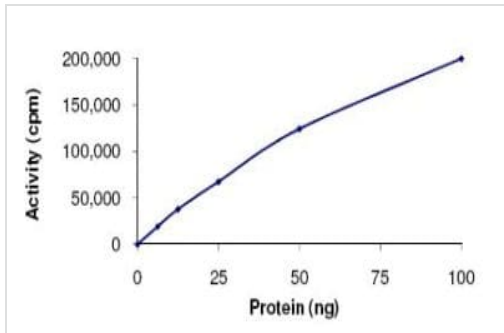


SDS-PAGE - Recombinant human p38 delta/MAPK13 protein (ab125643)

SDS-PAGE analysis of ab125643.



SDS-PAGE - Recombinant human p38 delta/MAPK13 protein (ab125643)



Functional Studies - Recombinant human p38
delta/MAPK13 protein (ab125643)

The specific activity of ab125643 was determined to be 140 nmol/min/mg by Kinase Assay.

Please note: All products are "FOR RESEARCH USE ONLY. NOT FOR USE IN DIAGNOSTIC PROCEDURES"

Our Abpromise to you: Quality guaranteed and expert technical support

- Replacement or refund for products not performing as stated on the datasheet
- Valid for 12 months from date of delivery
- Response to your inquiry within 24 hours
- We provide support in Chinese, English, French, German, Japanese and Spanish
- Extensive multi-media technical resources to help you
- We investigate all quality concerns to ensure our products perform to the highest standards

If the product does not perform as described on this datasheet, we will offer a refund or replacement. For full details of the Abpromise, please visit <https://www.abcam.com/abpromise> or contact our technical team.

Terms and conditions

- Guarantee only valid for products bought direct from Abcam or one of our authorized distributors