

# Recombinant Human PACS2 protein ab161579

1 Image

### Description

---

<b>Product name</b>	Recombinant Human PACS2 protein
<b>Expression system</b>	Wheat germ
<b>Protein length</b>	Full length protein
<b>Animal free</b>	No
<b>Nature</b>	Recombinant
<b>Species</b>	Human
<b>Sequence</b>	

MAERGRGLPGAPGALNTPVPMNLFATWEVDGSSPSCV  
PRLCSLTKKLV  
VFKELEKELISVVIKMQGSKRILRSHEMLPPSGQVETDL  
ALTFSLQY  
PHFLKREGNKLQIMLQRRKRYKNRTILGYKTLAAGSISMAE  
VMQHPSEGG  
QVLSLCSSIKEAPVKAADIWIASLSSQPIDHEDSTMQAGPK  
AKSTDNYSE  
EEYESFSSEQEASDDAVQGQDLDEDDFDVGGPKKQRRS  
VRTTSMTRQQN  
FKQKVVALRRFKVSGEVLDSQDPAEHIPEAEEDLDLLY  
DTLDMEHPSD  
SGPDMEDDSDVLPKPKLRPYFEGLSHSSSQTEIGSIHS  
ARSHKEPPSP  
ADVPEKTRSLGGRQPSDSVSDTVALGVPGPREHPGQPE  
DSPEAEASTLDV  
FTERLPPSGRITKTESLVIPSTRSEKQAGRRGRSTSLKER  
QAARPQNER  
ANSLDNERCPDARSQIQHRKTVYDQLNDILISDDQLPENII  
LVNTSDWQ  
GQFLSDVLQRHTLPVVCTCSPADVQAAFSTIVSRIQRYCN  
CNSQPPTPVK  
IAVAGAQHYSAILRLFVEQLSHKTPDWLGYMRFLVIPLGS  
HPVARYLGS  
VDYRYNFFQDLAWRDLFNKLEAQS AVQDTPDIVSRITQYI  
AGANCAHQL  
PIAEAMLYKQKSPDEESSQKFIPFVGVVVKVGIVEPSSATS  
GSDDAAPS  
GSGTSSSTPPSASPAAKEASPTPPSSPSVSGGLSSPSQG

VGAELMGLQVD  
YWTAAQPADRKRDAEKKDLPVTKNTLKCTFRSLQVSRLP  
SSGEAAATPTM  
SMTVVTKKKNKVMFLPKKAKDKDVESKSCIEGISRLIC  
TARQQQNMLR  
VLIDGVECSVDKFFQLAAQWSSHVKHFPICIFGHKATF

**Amino acids** 1 to 889  
**Tags** GST tag N-Terminus

## Specifications

---

Our **Abpromise guarantee** covers the use of **ab161579** in the following tested applications.

The application notes include recommended starting dilutions; optimal dilutions/concentrations should be determined by the end user.

**Applications** Western blot

ELISA

**Form** Liquid

**Additional notes**

## Preparation and Storage

---

**Stability and Storage** Shipped on dry ice. Upon delivery aliquot and store at -80°C. Avoid freeze / thaw cycles.

pH: 8.00

Constituents: 0.31% Glutathione, 0.79% Tris HCl

## General Info

---

**Function** Multifunctional sorting protein that controls the endoplasmic reticulum (ER)-mitochondria communication, including the apposition of mitochondria with the ER and ER homeostasis. In addition, in response to apoptic inducer, translocates BIB to mitochondria, which initiates a sequence of events including the formation of mitochondrial truncated BID, the release of cytochrome c, the activation of caspase-3 thereby causing cell death. May also be involved in ion channel trafficking, directing acidic cluster-containing ion channels to distinct subcellular compartments.

**Tissue specificity** Broadly expressed, with greatest levels in skeletal muscle followed by heart, brain, pancreas and testis.

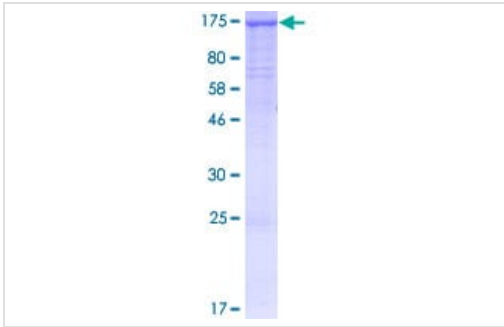
**Sequence similarities** Belongs to the PACS family.

**Cellular localization** Endoplasmic reticulum lumen. Mitochondrion.

---

## Images

---



SDS-PAGE - Recombinant Human PACS2 protein  
(ab161579)

ab161579 on a 12.5% SDS-PAGE stained with Coomassie Blue.

**Please note:** All products are "FOR RESEARCH USE ONLY. NOT FOR USE IN DIAGNOSTIC PROCEDURES"

### Our Abpromise to you: Quality guaranteed and expert technical support

---

- Replacement or refund for products not performing as stated on the datasheet
- Valid for 12 months from date of delivery
- Response to your inquiry within 24 hours
- We provide support in Chinese, English, French, German, Japanese and Spanish
- Extensive multi-media technical resources to help you
- We investigate all quality concerns to ensure our products perform to the highest standards

If the product does not perform as described on this datasheet, we will offer a refund or replacement. For full details of the Abpromise, please visit <https://www.abcam.com/abpromise> or contact our technical team.

### Terms and conditions

---

- Guarantee only valid for products bought direct from Abcam or one of our authorized distributors