

Product datasheet

Recombinant Human Parathyroid Hormone protein ab51234

[3 Images](#)

Description

Product name	Recombinant Human Parathyroid Hormone protein
Purity	> 90 % SDS-PAGE. Human Parathyroid Hormone(amino acids 32-115) was overexpressed in E. coli and purified to apparent homogeneity by using conventional column chromatography techniques.
Endotoxin level	< 1.000 Eu/μg
Expression system	Escherichia coli
Accession	<u>P01270</u>
Protein length	Full length protein
Animal free	No
Nature	Recombinant
Species	Human
Sequence	MSVSEIQLMH NLGKHLNSME RVEWLRKKLQ DVHNFVALGA PLAPRDAGSQ RPRKKEDNVL VESHEKSLGE ADKADVNVLT KAKSQ
Predicted molecular weight	10 kDa
Amino acids	32 to 115

Specifications

Our **Abpromise guarantee** covers the use of **ab51234** in the following tested applications.

The application notes include recommended starting dilutions; optimal dilutions/concentrations should be determined by the end user.

Applications	ELISA Western blot SDS-PAGE
Form	Liquid

Preparation and Storage

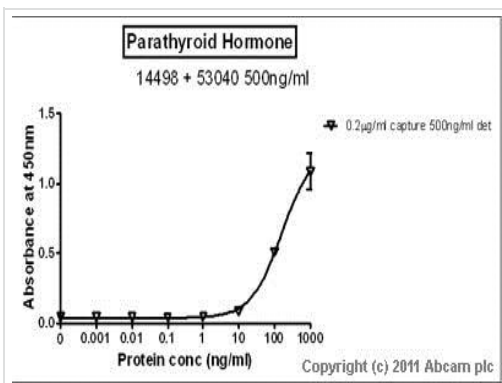
Stability and Storage Shipped at 4°C. Upon delivery aliquot and store at -20°C. Avoid freeze / thaw cycles.

pH: 7.40
Constituents: PBS, 0.0584% EDTA

General Info

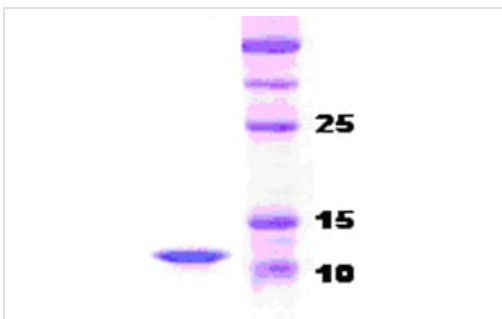
Function	PTH elevates calcium level by dissolving the salts in bone and preventing their renal excretion. Stimulates [1-14C]-2-deoxy-D-glucose (2DG) transport and glycogen synthesis in osteoblastic cells.
Involvement in disease	Defects in PTH are a cause of familial isolated hypoparathyroidism (FIH) [MIM:146200]; also called autosomal dominant hypoparathyroidism or autosomal dominant hypocalcemia. FIH is characterized by hypocalcemia and hyperphosphatemia due to inadequate secretion of parathyroid hormone. Symptoms are seizures, tetany and cramps. FIH exist both as autosomal dominant and recessive forms of hypoparathyroidism.
Sequence similarities	Belongs to the parathyroid hormone family.
Cellular localization	Secreted.

Images



Standard curve for Parathyroid Hormone (Analyte: ab51234); dilution range 1pg/ml to 1µg/ml using Capture Antibody Mouse monoclonal [A1/70] to Parathyroid Hormone ([ab14493](#)) at 0.2µg/ml and Detector Antibody Rabbit polyclonal to Parathyroid Hormone ([ab53040](#)) at 0.5µg/ml.

Sandwich ELISA - Recombinant Human Parathyroid Hormone protein (ab51234)



ab51234 on 15%SDS-PAGE

SDS-PAGE - Recombinant Human Parathyroid Hormone protein (ab51234)



Western blot - Recombinant Human Parathyroid Hormone protein (ab51234)

Please note: All products are "FOR RESEARCH USE ONLY. NOT FOR USE IN DIAGNOSTIC PROCEDURES"

Our Abpromise to you: Quality guaranteed and expert technical support

- Replacement or refund for products not performing as stated on the datasheet
- Valid for 12 months from date of delivery
- Response to your inquiry within 24 hours
- We provide support in Chinese, English, French, German, Japanese and Spanish
- Extensive multi-media technical resources to help you
- We investigate all quality concerns to ensure our products perform to the highest standards

If the product does not perform as described on this datasheet, we will offer a refund or replacement. For full details of the Abpromise, please visit <https://www.abcam.com/abpromise> or contact our technical team.

Terms and conditions

- Guarantee only valid for products bought direct from Abcam or one of our authorized distributors