

Product datasheet

Recombinant Human PCYT2 protein ab123157

1 Image

Description

| | |
|-----------------------------------|---|
| Product name | Recombinant Human PCYT2 protein |
| Purity | > 90 % SDS-PAGE. ab123157 was purified using conventional chromatography. |
| Expression system | Escherichia coli |
| Accession | <u>Q99447</u> |
| Protein length | Full length protein |
| Animal free | No |
| Nature | Recombinant |
| Species | Human |
| Sequence | <pre>MGSSHHHHHH SSGLVPRGSH MIRNGRGAAG GAEQPGPGGR RAVRVWCDGC YDMVHYGHSN QLRQARAMGD YLIVGVHTDE EIAKHKGPPV FTQEERYKMV QAIKWVDEVV PAAPYVTTLT TLDKYNCFDC VHGNITLTV DGRDYEYEVK QAGRYRECKR TQGVSTTDLV GRMLLVTKAH HSSQEMSSEY REYADSFSGC PGGRNPWTGV SQFLQTSQKI IQFASGKEPQ PGETVYVAG AFDLFHIGHV DFLEKVHRLA ERPYIAGLH FDQEVNHYKG KNYPIMNLHE RTLSVLACRY VSEVVIGAPY AVTAELLSHF KVDLVCHGKT EIIPDRDGSD PYQEPKRRGI FRQIDSGSNL TTDLVQR II TNRLEYEAR N QKKEAKELAF LEAARQQAQ PLGERDGDF</pre> |
| Predicted molecular weight | 46 kDa including tags |
| Amino acids | 1 to 389 |
| Tags | His tag N-Terminus |

Specifications

Our **Abpromise guarantee** covers the use of **ab123157** in the following tested applications.

The application notes include recommended starting dilutions; optimal dilutions/concentrations should be determined by the end user.

| | |
|---------------------|-------------------------------|
| Applications | Mass Spectrometry SDS-PAGE |
|---------------------|-------------------------------|

| | |
|--------------------------|-----------|
| Mass spectrometry | MALDI-TOF |
| Form | Liquid |

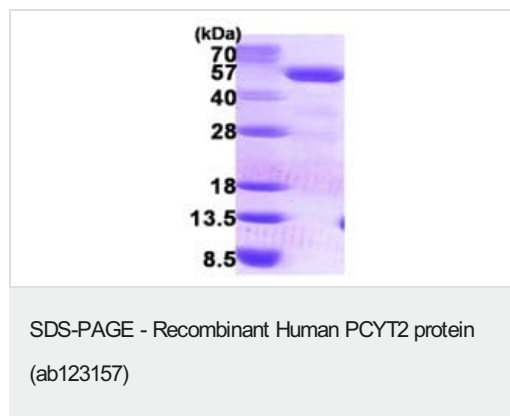
Preparation and Storage

| | |
|------------------------------|---|
| Stability and Storage | Shipped at 4°C. Store at +4°C short term (1-2 weeks). Upon delivery aliquot. Store at -20°C or -80°C. Avoid freeze / thaw cycle. pH: 8.00 Constituents: 0.002% PMSF, 0.02% DTT, 0.32% Tris HCl, 20% Glycerol (glycerin, glycerine), 0.58% Sodium chloride |
|------------------------------|---|

General Info

| | |
|------------------------------|--|
| Function | Plays an important role in the biosynthesis of the phospholipid phosphatidylethanolamine. Catalyzes the formation of CDP-ethanolamine. |
| Tissue specificity | Strongest expression in liver, heart, and skeletal muscle. |
| Pathway | Phospholipid metabolism; phosphatidylethanolamine biosynthesis; phosphatidylethanolamine from ethanolamine: step 2/3. |
| Sequence similarities | Belongs to the cytidyltransferase family. |

Images



15% SDS-PAGE analysis of 3 µg of Human PCYT2 protein (ab123157).

Please note: All products are "FOR RESEARCH USE ONLY. NOT FOR USE IN DIAGNOSTIC PROCEDURES"

Our Abpromise to you: Quality guaranteed and expert technical support

- Replacement or refund for products not performing as stated on the datasheet
- Valid for 12 months from date of delivery
- Response to your inquiry within 24 hours

- We provide support in Chinese, English, French, German, Japanese and Spanish
- Extensive multi-media technical resources to help you
- We investigate all quality concerns to ensure our products perform to the highest standards

If the product does not perform as described on this datasheet, we will offer a refund or replacement. For full details of the Abpromise, please visit <https://www.abcam.com/abpromise> or contact our technical team.

Terms and conditions

- Guarantee only valid for products bought direct from Abcam or one of our authorized distributors