

Product datasheet

Recombinant human PD-L1 protein (Fc Chimera Active) (Biotin) ab198649

2 Images

Description

Product name	Recombinant human PD-L1 protein (Fc Chimera Active) (Biotin)		
Purity	> 90 % SDS-PAGE.		
Expression system	HEK 293 cells		
Accession	<u>Q9NZQ7</u>		
Protein length	Protein fragment		
Animal free	No		
Nature	Recombinant		
Species	Human		
Sequence	FTVTVPKDLVVEYGSNMTIECKFPVEKQLDLAALIVWE MEDKNIIQFV HGEEDLKVQHSSYRQARLLKDQLSLGNAALQITDVKLQD AGVYRCMISY GGADYKRITVKVNAPYNKINQRILVDPVTSEHELTCQAEG YPKAEVIWT SSDHQVLSGKTTTTNSKREEKLFNVTSTLRINTTTNEIFYCT FRRLDPEE NHTAELVIPELPLAHPNERTDIEGRMDPKSCDKTHTCPP CPAPELLGGP SVFLFPPKPKDTLMISRTPEVTCVVVDVSHEDPEVKFNW YVDGVEVHNAK TKPREEQYNSTYRVVSVLTVLHQDWLNGKEYKCKVSNKA LPAPIEKTISK AKGQPREPQVYTLPPSREEMTKNQVSLTCLVKGFYPSDIA VEWESNGQPE NNYKTTTPVLDSGDSFFLYSKLTVDKSRWQQGNVFSCSV MHEALHNHYTQ KSLSLSPGKGGGLNDIFEAQKIEWHE		
Predicted molecular weight	54 kDa including tags		
Amino acids	19 to 239		
Additional sequence information	Recombinant fragment of Human PD-L1 (amino acids 19-239) fused at C terminal with Fc portion of IgG1 with a C-terminal biotin label added using Avi-tag™ technology.		

## Conjugation

Biotin

## Specifications

Our **Abpromise guarantee** covers the use of **ab198649** in the following tested applications.

The application notes include recommended starting dilutions; optimal dilutions/concentrations should be determined by the end user.

### Applications

SDS-PAGE

Functional Studies

### Form

Liquid

## Preparation and Storage

### Stability and Storage

Shipped on Dry Ice. Store at -80°C. Avoid freeze / thaw cycle.

pH: 7.4

Constituents: 0.63% Tris HCl, 0.64% Sodium chloride, 0.02% Potassium chloride, 20% Glycerol (glycerin, glycerine)

This product is an active protein and may elicit a biological response in vivo, handle with caution.

## General Info

### Function

Involved in the costimulatory signal, essential for T-cell proliferation and production of IL10 and IFNG, in an IL2-dependent and a PDCD1-independent manner. Interaction with PDCD1 inhibits T-cell proliferation and cytokine production.

### Tissue specificity

Highly expressed in the heart, skeletal muscle, placenta and lung. Weakly expressed in the thymus, spleen, kidney and liver. Expressed on activated T- and B-cells, dendritic cells, keratinocytes and monocytes.

### Sequence similarities

Belongs to the immunoglobulin superfamily. BTN/MOG family.

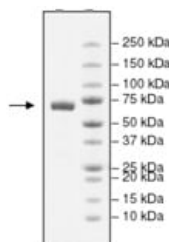
Contains 1 Ig-like C2-type (immunoglobulin-like) domain.

Contains 1 Ig-like V-type (immunoglobulin-like) domain.

### Cellular localization

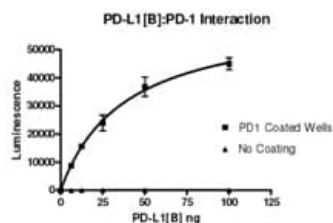
Cell membrane and Endomembrane system.

## Images



4-20% SDS Page analysis of ab198649 (2.1 µg)

SDS-PAGE - Recombinant human PD-L1 protein  
(Fc Chimera Active) (Biotin) (ab198649)



Example of specific activity of ab198649

Functional Studies - Recombinant human PD-L1 protein (Fc Chimera Active) (Biotin) (ab198649)

**Please note:** All products are "FOR RESEARCH USE ONLY. NOT FOR USE IN DIAGNOSTIC PROCEDURES"

### Our Abpromise to you: Quality guaranteed and expert technical support

- Replacement or refund for products not performing as stated on the datasheet
- Valid for 12 months from date of delivery
- Response to your inquiry within 24 hours
- We provide support in Chinese, English, French, German, Japanese and Spanish
- Extensive multi-media technical resources to help you
- We investigate all quality concerns to ensure our products perform to the highest standards

If the product does not perform as described on this datasheet, we will offer a refund or replacement. For full details of the Abpromise, please visit <https://www.abcam.com/abpromise> or contact our technical team.

### Terms and conditions

- Guarantee only valid for products bought direct from Abcam or one of our authorized distributors