

## Product datasheet

# Recombinant Human PFDN1 protein ab101047

1 Image

### Description

---

<b>Product name</b>	Recombinant Human PFDN1 protein
<b>Purity</b>	> 90 % SDS-PAGE. ab101047 is purified using conventional chromatography techniques
<b>Expression system</b>	Escherichia coli
<b>Accession</b>	<b><u>O60925</u></b>
<b>Protein length</b>	Protein fragment
<b>Animal free</b>	No
<b>Nature</b>	Recombinant
<b>Species</b>	Human
<b>Sequence</b>	<b>MGSSHHHHHH SSSLVPRGSH</b> MTELQAKVID TQQKVKLADI QIEQLNRTKK HAHLTDTEIM TLVDETMYE GVGRMFIQS KEAHSQLE KQKIAEEKIK ELEQKKSYLE RSVKEAEDNI REMLMARRAQ
<b>Predicted molecular weight</b>	15 kDa including tags
<b>Amino acids</b>	14 to 122
<b>Tags</b>	His tag N-Terminus

### Specifications

---

Our **Abpromise guarantee** covers the use of **ab101047** in the following tested applications.

The application notes include recommended starting dilutions; optimal dilutions/concentrations should be determined by the end user.

<b>Applications</b>	Mass Spectrometry SDS-PAGE
<b>Mass spectrometry</b>	MALDI-TOF
<b>Form</b>	Liquid

### Preparation and Storage

---

<b>Stability and Storage</b>	Shipped at 4°C. Upon delivery aliquot and store at -20°C or -80°C. Avoid repeated freeze / thaw cycles.
------------------------------	---

pH: 8.00

Constituents: 0.316% Tris HCl, 20% Glycerol (glycerin, glycerine)

## General Info

---

### Function

Binds specifically to cytosolic chaperonin (c-CPN) and transfers target proteins to it. Binds to nascent polypeptide chain and promotes folding in an environment in which there are many competing pathways for nonnative proteins.

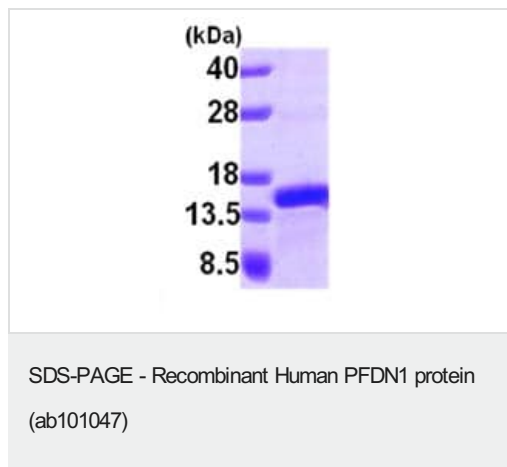
### Sequence similarities

Belongs to the prefoldin subunit beta family.

---

## Images

---



ab101047 at 3 µg on an SDS-PAGE gel (15%)

**Please note:** All products are "FOR RESEARCH USE ONLY. NOT FOR USE IN DIAGNOSTIC PROCEDURES"

## Our Abpromise to you: Quality guaranteed and expert technical support

---

- Replacement or refund for products not performing as stated on the datasheet
- Valid for 12 months from date of delivery
- Response to your inquiry within 24 hours
- We provide support in Chinese, English, French, German, Japanese and Spanish
- Extensive multi-media technical resources to help you
- We investigate all quality concerns to ensure our products perform to the highest standards

If the product does not perform as described on this datasheet, we will offer a refund or replacement. For full details of the Abpromise, please visit <https://www.abcam.com/abpromise> or contact our technical team.

## Terms and conditions

---

- Guarantee only valid for products bought direct from Abcam or one of our authorized distributors