

Product datasheet

Recombinant human PKC mu/PKD protein ab60873

6 Images

Description

Product name	Recombinant human PKC mu/PKD protein
Purity	> 90 % Densitometry. Affinity purified.
Expression system	Baculovirus infected Sf9 cells
Protein length	Full length protein
Animal free	No
Nature	Recombinant
Species	Human

Specifications

Our **Abpromise guarantee** covers the use of **ab60873** in the following tested applications.

The application notes include recommended starting dilutions; optimal dilutions/concentrations should be determined by the end user.

Applications	SDS-PAGE Functional Studies Western blot
Form	Liquid
Additional notes	ab204856 (CREB peptide) can be utilized as a substrate for assessing kinase activity This product was previously labelled as PKC mu

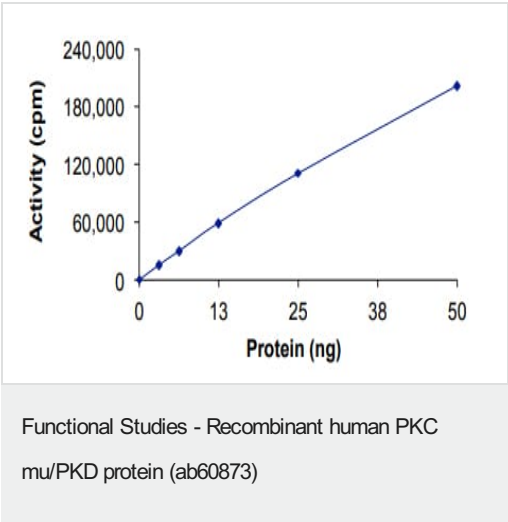
Preparation and Storage

Stability and Storage	Shipped on dry ice. Upon delivery aliquot and store at -80°C. Avoid freeze / thaw cycles. pH: 7.50 Constituents: 0.0038% EGTA, 0.00174% PMSF, 0.00385% DTT, 0.79% Tris HCl, 0.00292% EDTA, 25% Glycerol (glycerin, glycerine), 0.87% Sodium chloride This product is an active protein and may elicit a biological response in vivo, handle with caution.
------------------------------	--

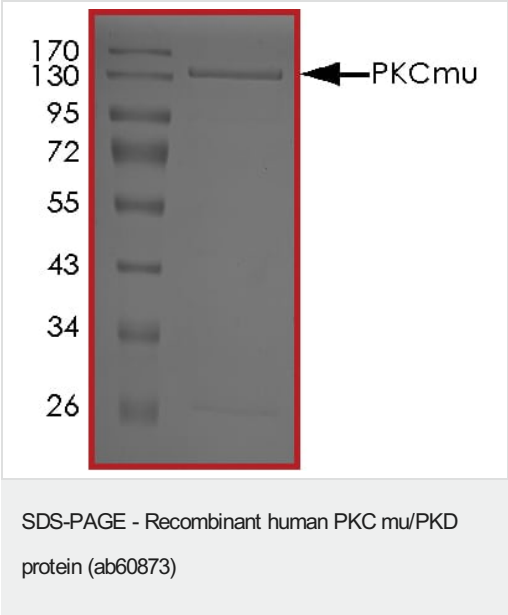
General Info

Function	Converts transient diacylglycerol (DAG) signals into prolonged physiological effects, downstream of PKC. Involved in resistance to oxidative stress through activation of NF-kappa-B.
Sequence similarities	Belongs to the protein kinase superfamily. CAMK Ser/Thr protein kinase family. PKD subfamily. Contains 1 PH domain. Contains 2 phorbol-ester/DAG-type zinc fingers. Contains 1 protein kinase domain.
Cellular localization	Cytoplasm. Membrane. Translocation to the cell membrane is required for kinase activation.

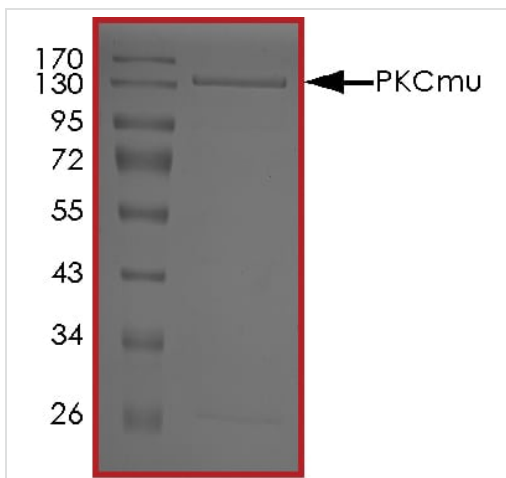
Images



The specific activity of PKC mu/PKD (ab60873) was determined to be 650 nmol/min/mg as per activity assay protocol



SDS PAGE analysis of ab60873



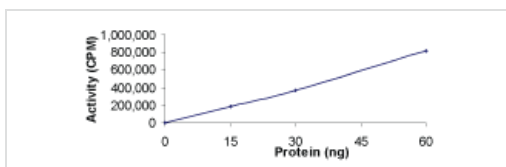
SDS PAGE analysis of ab60873

SDS-PAGE - Recombinant human PKC mu/PKD protein (ab60873)



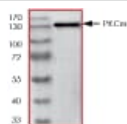
Ab5283 recognizes the full length tagged recombinant PKC mu protein (ab60873) which has an expected molecular weight of 131 kDa.

Western blot - Recombinant human PKC mu/PKD protein (ab60873)



Sample Kinase Activity Plot.

Functional Studies - Recombinant human PKC mu/PKD protein (ab60873)



ab60873 on SDS-PAGE, MW ~131 kDa.

SDS-PAGE - Recombinant human PKC mu/PKD
protein (ab60873)

Please note: All products are "FOR RESEARCH USE ONLY. NOT FOR USE IN DIAGNOSTIC PROCEDURES"

Our Abpromise to you: Quality guaranteed and expert technical support

- Replacement or refund for products not performing as stated on the datasheet
- Valid for 12 months from date of delivery
- Response to your inquiry within 24 hours
- We provide support in Chinese, English, French, German, Japanese and Spanish
- Extensive multi-media technical resources to help you
- We investigate all quality concerns to ensure our products perform to the highest standards

If the product does not perform as described on this datasheet, we will offer a refund or replacement. For full details of the Abpromise, please visit <https://www.abcam.com/abpromise> or contact our technical team.

Terms and conditions

- Guarantee only valid for products bought direct from Abcam or one of our authorized distributors