

## Product datasheet

# Recombinant human PKN3 protein ab125615

[5 Images](#)

### Description

<b>Product name</b>	Recombinant human PKN3 protein
<b>Biological activity</b>	The specific activity of ab125615 was determined to be 3 nmol/mg/min.
<b>Purity</b>	> 75 % Densitometry. Affinity purified.
<b>Expression system</b>	Baculovirus infected Sf9 cells
<b>Accession</b>	<u><b>Q6P5Z2</b></u>
<b>Protein length</b>	Full length protein
<b>Animal free</b>	No
<b>Nature</b>	Recombinant
<b>Species</b>	Human
<b>Predicted molecular weight</b>	130 kDa including tags
<b>Amino acids</b>	1 to 889
<b>Tags</b>	GST tag N-Terminus

### Specifications

Our **Abpromise guarantee** covers the use of **ab125615** in the following tested applications.

The application notes include recommended starting dilutions; optimal dilutions/concentrations should be determined by the end user.

<b>Applications</b>	Western blot Functional Studies SDS-PAGE
<b>Form</b>	Liquid
<b>Additional notes</b>	<u><b>ab204879</b></u> (RPS6 peptide) can be utilized as a substrate for assessing kinase activity This product was previously labelled as PKN beta

### Preparation and Storage

<b>Stability and Storage</b>	Shipped on dry ice. Upon delivery aliquot and store at -80°C. Avoid freeze / thaw cycles.
------------------------------	-------------------------------------------------------------------------------------------

pH: 7.50

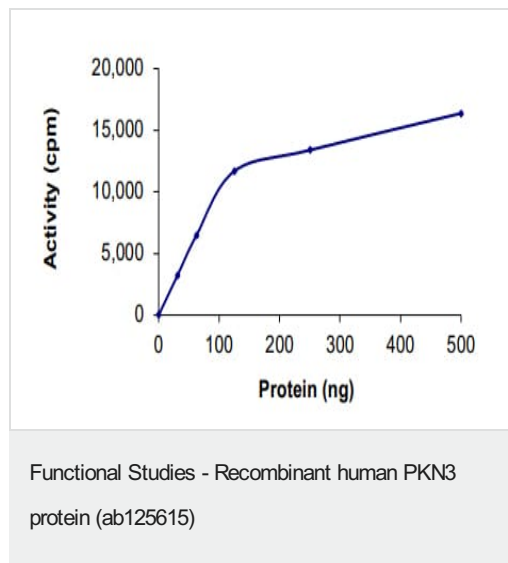
Constituents: 0.31% Glutathione, 0.002% PMSF, 0.004% DTT, 0.79% Tris HCl, 0.003% EDTA, 25% Glycerol (glycerin, glycerine), 0.88% Sodium chloride

This product is an active protein and may elicit a biological response in vivo, handle with caution.

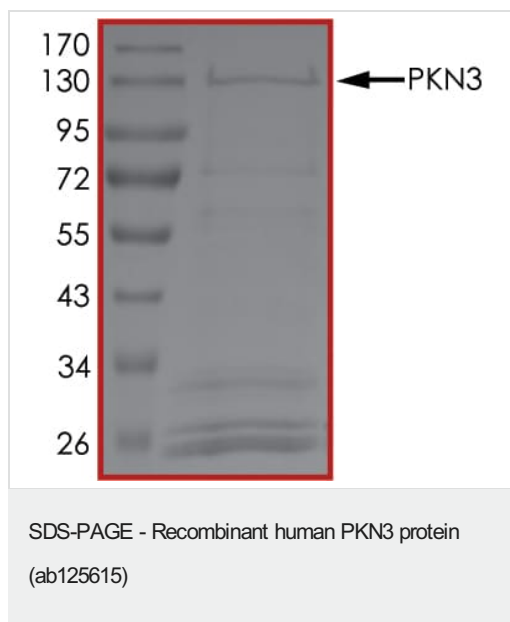
## General Info

<b>Function</b>	Contributes to invasiveness in malignant prostate cancer.
<b>Tissue specificity</b>	Expressed in prostate tumors and various cancer cell lines. Not expressed in adult tissues.
<b>Sequence similarities</b>	Belongs to the protein kinase superfamily. AGC Ser/Thr protein kinase family. PKC subfamily. Contains 1 AGC-kinase C-terminal domain. Contains 1 protein kinase domain. Contains 3 REM (Hr1) repeats.
<b>Domain</b>	The C1 domain does not bind the diacylglycerol (DAG).
<b>Post-translational modifications</b>	Autophosphorylated.
<b>Cellular localization</b>	Nucleus. Cytoplasm > perinuclear region. Nuclear and perinuclear Golgi region.

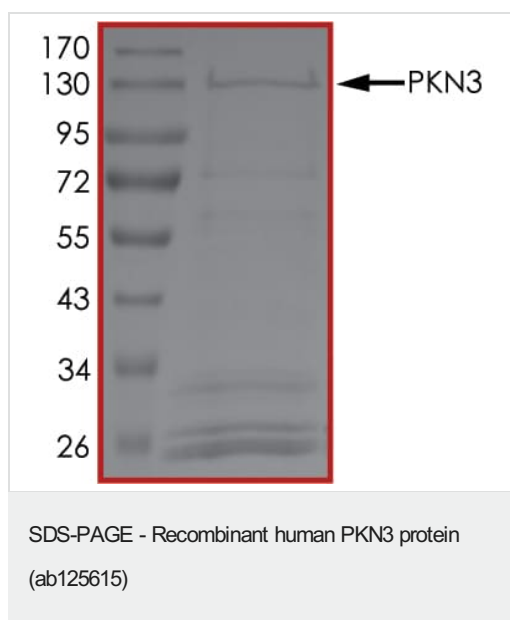
## Images



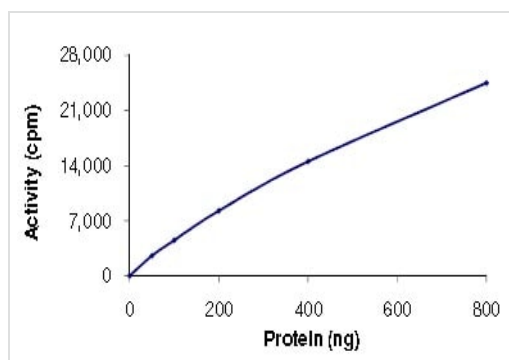
The specific activity of PKN3 (ab125615) was determined to be 3.5 nmol/min/mg as per activity assay protocol



SDS PAGE analysis of ab125615

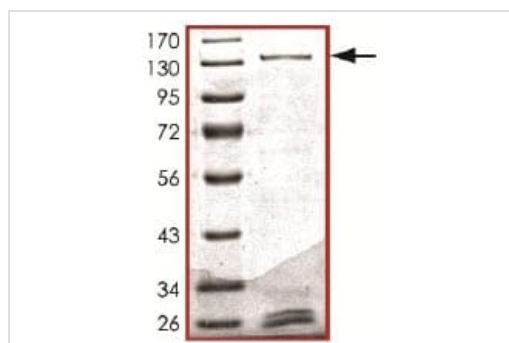


SDS PAGE analysis of ab125615



Sample Kinase Assay showing the specific activity of ab125615 as 3 nmol/mg/min.

Functional Studies - Recombinant human PKN3 protein (ab125615)



SDS-PAGE analysis of ab125615.

SDS-PAGE - Recombinant human PKN3 protein (ab125615)

**Please note:** All products are "FOR RESEARCH USE ONLY. NOT FOR USE IN DIAGNOSTIC PROCEDURES"

### Our Abpromise to you: Quality guaranteed and expert technical support

- Replacement or refund for products not performing as stated on the datasheet
- Valid for 12 months from date of delivery
- Response to your inquiry within 24 hours
- We provide support in Chinese, English, French, German, Japanese and Spanish
- Extensive multi-media technical resources to help you
- We investigate all quality concerns to ensure our products perform to the highest standards

If the product does not perform as described on this datasheet, we will offer a refund or replacement. For full details of the Abpromise, please visit <https://www.abcam.com/abpromise> or contact our technical team.

## Terms and conditions

---

- Guarantee only valid for products bought direct from Abcam or one of our authorized distributors