

Product datasheet

Recombinant Human PLA2G1B protein ab63842

1 Image

Description

Product name	Recombinant Human PLA2G1B protein
Purity	> 95 % SDS-PAGE.
Expression system	Escherichia coli
Accession	<u>P04054</u>
Protein length	Protein fragment
Animal free	No
Nature	Recombinant
Species	Human
Sequence	MRGSHHHHHH GMASHMAVWQ FRKMIKCVIP GSDPFLEYNN YGCYCGLGGS GTPVDELDKC CQTHDNCYDQ AKKLDSCCKFL LDNPYHTYS YSCSGSAITC SSKNKECEAF ICNCDRNAAI CFSKAPYNKA HKNLDTKKYC QS
Amino acids	23 to 148
Tags	His tag N-Terminus
Additional sequence information	Total 142 AA. MW: 16 kDa (calculated). N-Terminal His-tag, 16 extra AA

Specifications

Our **Abpromise guarantee** covers the use of **ab63842** in the following tested applications.

The application notes include recommended starting dilutions; optimal dilutions/concentrations should be determined by the end user.

Applications	Western blot
Form	Lyophilized
Additional notes	Product is NOT sterile! Please filter the product by an appropriate sterile filter before using it in cell culture.

Preparation and Storage

Stability and Storage	Shipped at 4°C. Upon delivery aliquot. Store at -80°C. Avoid freeze / thaw cycle. Constituent: 0.41% Sodium acetate
------------------------------	--

Reconstitution

Add 0.1M Acetate buffer pH4 to prepare a working stock solution of approximately 0.5 mg/ml and let the lyophilized pellet dissolve completely. For conversion into higher pH value, we recommend intensive dilution by relevant buffer to a concentration of 10µg/ml. In higher concentrations the solubility of this antigen is limited.

General Info

Function

PA2 catalyzes the calcium-dependent hydrolysis of the 2-acyl groups in 3-sn-phosphoglycerides.

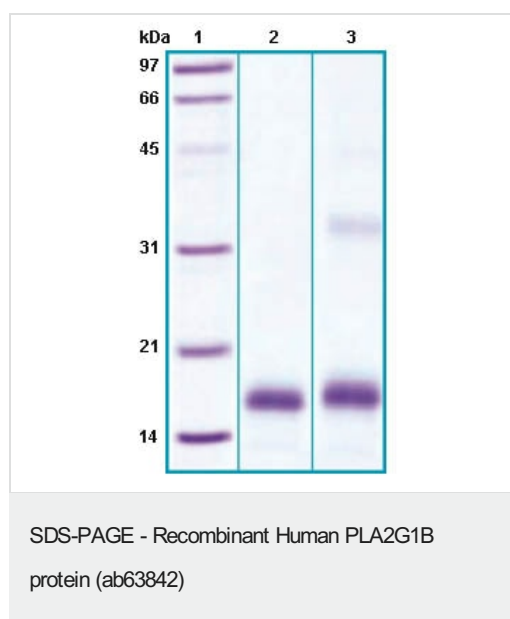
Sequence similarities

Belongs to the phospholipase A2 family.

Cellular localization

Secreted.

Images



12% SDS-PAGE separation of ab63842. Molecular Weight: ~16 kDa.

Lane 1. Molecular weight marker

Lane 2. reduced and heated sample, 5µg/lane

Lane 3. non-reduced and non-heated sample, 5µg/lane

Please note: All products are "FOR RESEARCH USE ONLY. NOT FOR USE IN DIAGNOSTIC PROCEDURES"

Our Abpromise to you: Quality guaranteed and expert technical support

- Replacement or refund for products not performing as stated on the datasheet
- Valid for 12 months from date of delivery
- Response to your inquiry within 24 hours
- We provide support in Chinese, English, French, German, Japanese and Spanish
- Extensive multi-media technical resources to help you
- We investigate all quality concerns to ensure our products perform to the highest standards

If the product does not perform as described on this datasheet, we will offer a refund or replacement. For full details of the Abpromise, please visit <https://www.abcam.com/abpromise> or contact our technical team.

Terms and conditions

- Guarantee only valid for products bought direct from Abcam or one of our authorized distributors