

Recombinant human PPIL2 protein ab93731

1 Image

Description

Product name	Recombinant human PPIL2 protein
Biological activity	Specific activity is > 290 nmoles/min/mg, and is defined as the amount of enzyme that cleaves 1 μmole of suc-AAPF-pNA per minute at 37°C in Tris-Hcl pH8.0 using chymotrypsin
Purity	> 95 % SDS-PAGE. Purified using conventional chromatography techniques.
Expression system	Escherichia coli
Protein length	Full length protein
Animal free	No
Nature	Recombinant
Species	Human
Sequence	

MGSSHHHHHHSSGLVPRGSHMGKRQHQKDKMYITCAEYT
HFYGGKKPDLP
QTNFRRLPFDHCSLSLQPFVYPVCTPDGMFDLLNVPWLK
KYGTNPSNG
EKLDGRSLIKLNFSKNSEGGKYHCPVLFTVFTNNTHIAVRT
TGNVYAYEA
VEQLNIKAKNFRDLLTDEPF SRQDIITLQDPTNLDKFNVS
N
FYHVKNMKN
IIDPDEEKAKQDPSYLLKNTNAETRETQLQELYKEFKGDEILA
ATMKAPEK
KKVDKLNAAHYSTGKVSASFSTAMVPETTAAAAIDEDV
LRYQFVKKKG
YVRLHTNKGDLNLELHCDLTPKTCENFIRLCKKHYYDGTIF
HRSIRNFVI
QGGDPTGTGTGGESYWGKPFKDEF RPNLSHTGRGILSMA
NSGPNSNRSQF
FITFRSCAYLDKKHTIFGRVVGGFVLTAMENVESDPKTD
RPKEEIRIDA
TTVFVDPYEEADAQIAQERKTQLKVAPETKVKSSQPQAG
SQGPQTFRQGV
GKYINPAATEQQRKSPQPVPLSPCPRRSPVGVLTGSAPG
SSRLPDDH

Amino acids1 to 527

Specifications

Our **Abpromise guarantee** covers the use of **ab93731** in the following tested applications.

The application notes include recommended starting dilutions; optimal dilutions/concentrations should be determined by the end user.

Applications	Functional Studies
	SDS-PAGE
Form	Liquid

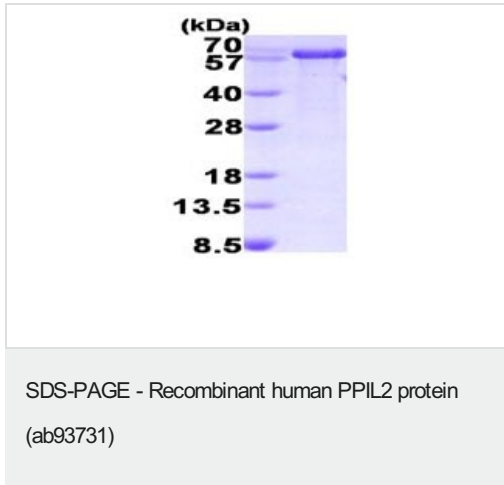
Preparation and Storage

Stability and Storage	Shipped at 4°C. Store at +4°C short term (1-2 weeks). Upon delivery aliquot. Store at -20°C or -80°C. Avoid freeze / thaw cycle. pH: 8.00 Constituents: 0.316% Tris HCl, 20% Glycerol (glycerin, glycerine), 0.58% Sodium chloride This product is an active protein and may elicit a biological response in vivo, handle with caution.
------------------------------	--

General Info

Function	PPases accelerate the folding of proteins. It catalyzes the cis-trans isomerization of proline imidic peptide bonds in oligopeptides.
Tissue specificity	Highest expression in thymus, pancreas and testis. Also detected in heart, placenta, lung, liver, skeletal muscle, kidney, spleen, prostate, ovary, small intestine and colon. Poorly detected in brain and leukocytes. Strong protein expression in lymph node (cortical, paracortical and medullar regions), thyroid (follicular epithelial cells), testis (developing spermatozoa), stomach (cells lining the gastric pit), pancreas, kidney (proximal and distal-tubule cells and collecting duct cells but not in glomeruli), endometrium and colon (goblet cells). Moderate protein expression in spleen, prostate (epithelium and squamous cell carcinomas), placenta and adrenal gland. Weak protein expression in liver, heart, breast, ovary, and lung. No protein expression in brain and bladder. High protein expression in most lymphomas and melanomas.
Sequence similarities	Belongs to the cyclophilin-type PPase family. PPIL2 subfamily. Contains 1 PPase cyclophilin-type domain. Contains 1 U-box domain.
Cellular localization	Nucleus.

Images



15% SDS Page of 3ug ab93731

Please note: All products are "FOR RESEARCH USE ONLY. NOT FOR USE IN DIAGNOSTIC PROCEDURES"

Our Abpromise to you: Quality guaranteed and expert technical support

- Replacement or refund for products not performing as stated on the datasheet
- Valid for 12 months from date of delivery
- Response to your inquiry within 24 hours
- We provide support in Chinese, English, French, German, Japanese and Spanish
- Extensive multi-media technical resources to help you
- We investigate all quality concerns to ensure our products perform to the highest standards

If the product does not perform as described on this datasheet, we will offer a refund or replacement. For full details of the Abpromise, please visit <https://www.abcam.com/abpromise> or contact our technical team.

Terms and conditions

- Guarantee only valid for products bought direct from Abcam or one of our authorized distributors