

## Product datasheet

# Recombinant human PPIL3 protein ab113119

1 Image

### Description

<b>Product name</b>	Recombinant human PPIL3 protein	
<b>Biological activity</b>	Specific activity is > 280 nmoles/min/mg, and is defined as the amount of enzyme that cleaves 1 μmole of suc-AAPF-pNA per minute at 37°C in Tris-Hcl pH8.0 using chymotrypsin.	
<b>Purity</b>	> 90 % SDS-PAGE. ab113119 was purified using conventional chromatography.	
<b>Expression system</b>	Escherichia coli	
<b>Accession</b>	<b><u>Q9H2H8</u></b>	
<b>Protein length</b>	Full length protein	
<b>Animal free</b>	No	
<b>Nature</b>	Recombinant	
<b>Species</b>	Human	
<b>Sequence</b>	MGSSHHHHHHSSGLVPRGSHMSVTLHTDVGDIKIEVFCE RTPKTCENFLA LCASNYNGCIFHRNIKGFMVQTGDPTGTGRGGNSIWGKK FEDEYSEYLK HNVRGVVSMANNPNTNGSQFFITYGKQPHLDMKYTVFG KVIDGLETLDE LEKLPVNEKTYRPLNDVHIKDITIHANPFAQ	
<b>Predicted molecular weight</b>	20 kDa including tags	
<b>Amino acids</b>	1 to 161	
<b>Tags</b>	His tag N-Terminus	

### Specifications

Our **Abpromise guarantee** covers the use of **ab113119** in the following tested applications.

The application notes include recommended starting dilutions; optimal dilutions/concentrations should be determined by the end user.

<b>Applications</b>	Mass Spectrometry
	Functional Studies
	SDS-PAGE
<b>Mass spectrometry</b>	MALDI-TOF
<b>Form</b>	Liquid

## Preparation and Storage

### Stability and Storage

Shipped at 4°C. Store at +4°C short term (1-2 weeks). Upon delivery aliquot. Store at -20°C or -80°C. Avoid freeze / thaw cycle.

pH: 8.00

Constituents: 0.02% DTT, 0.32% Tris HCl, 20% Glycerol (glycerin, glycerine), 0.58% Sodium chloride

This product is an active protein and may elicit a biological response in vivo, handle with caution.

## General Info

### Function

PPases accelerate the folding of proteins. It catalyzes the cis-trans isomerization of proline imidic peptide bonds in oligopeptides. May be involved in pre-mRNA splicing.

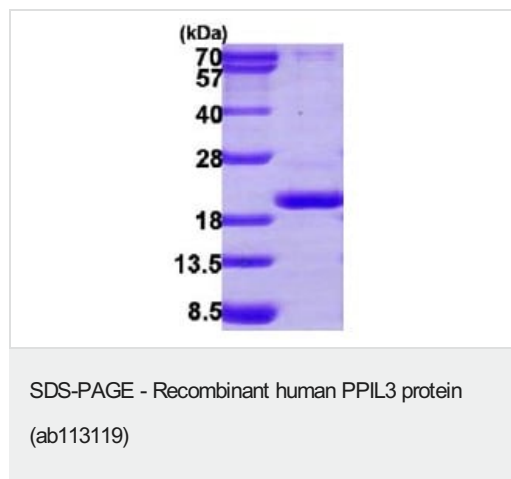
### Tissue specificity

Ubiquitous. Detected at low levels.

### Sequence similarities

Belongs to the cyclophilin-type PPase family. PPIL3 subfamily.  
Contains 1 PPase cyclophilin-type domain.

## Images



15% SDS-PAGE analysis of ab113119 (3µg)

**Please note:** All products are "FOR RESEARCH USE ONLY. NOT FOR USE IN DIAGNOSTIC PROCEDURES"

## Our Abpromise to you: Quality guaranteed and expert technical support

- Replacement or refund for products not performing as stated on the datasheet
- Valid for 12 months from date of delivery
- Response to your inquiry within 24 hours
- We provide support in Chinese, English, French, German, Japanese and Spanish
- Extensive multi-media technical resources to help you
- We investigate all quality concerns to ensure our products perform to the highest standards

If the product does not perform as described on this datasheet, we will offer a refund or replacement. For full details of the Abpromise,

please visit <https://www.abcam.com/abpromise> or contact our technical team.

## **Terms and conditions**

---

- Guarantee only valid for products bought direct from Abcam or one of our authorized distributors