

Recombinant human PPIL4 protein ab101207

1 Image

Description	
Product name	Recombinant human PPIL4 protein
Biological activity	Specific activity is > 190 nmoles/min/mg, and is defined as the amount of enzyme that cleaves 1 µmole of suc-AAPF-pNA per minute at 37°C in Tris-Hcl pH8.0 using chymotrypsin.
Purity	> 85 % SDS-PAGE. ab101207 was purified using conventional chromatography and is >85 % pure by SDS-PAGE.
Expression system	Escherichia coli
Accession	<u>Q8WUA2</u>
Protein length	Full length protein
Animal free	No
Nature	Recombinant
Species	Human
Sequence	MGSSHHHHHHSSGLVPRGSHMAVLLETTLGDVVIDLYTEE RPRACLNFLK LCKIKYNYCLIHNVQRDFIIQTGDPTGTGRGGESIFGQLYG DQASFFEA EKVPRIKHKKKGTVMVNNGSDQHGSQFLITTGENLDYLD GVHTVFG EVT EGMDIHKKINETFVDKDFVPYQDIRINHTVILDDPFDDPPDLL IPDRSPE PTREQLDSGRIGADEEIDDFKGRSAEEVEEIKAEKEAKTQ AILLEMVGD L PDADIKPPENVLFVCKLNPVTTDEDLEIIFSRFGPIRSCEVI RDWKTGES LCYAFIEFEKEEDCEKAFFKMDNVLIDDRRIHVDFSQSVA KVKWKGGKGGK YTKSDFKEYEKEQDKPPNLVLKDKVKPKQDTKYDLILDEQ AEDSKSSSHS TSKKHKKKTHHCSEEKEDEDYMPIKNTNQDIYREMFGHY EEEEESCWEKQ KSEKRDRTQNRSRSRERDGHYSNSHKSQYQTDLYERE RSKKRDRSRSP KSKDKESKSKYR
Predicted molecular weight	59 kDa including tags
Amino acids	1 to 512

Tags

His tag N-Terminus

Specifications

Our **Abpromise guarantee** covers the use of **ab101207** in the following tested applications.

The application notes include recommended starting dilutions; optimal dilutions/concentrations should be determined by the end user.

Applications	Mass Spectrometry
	SDS-PAGE
	Functional Studies
Mass spectrometry	MALDI-TOF
Form	Liquid

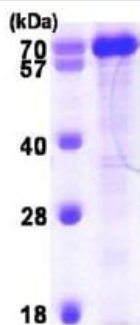
Preparation and Storage

Stability and Storage	Shipped at 4°C. Store at +4°C short term (1-2 weeks). Upon delivery aliquot. Store at -20°C or -80°C. Avoid freeze / thaw cycle.
	pH: 8.00
	Constituents: 0.0308% DTT, 0.316% Tris HCl, 10% Glycerol (glycerin, glycerine), 0.58% Sodium chloride
	This product is an active protein and may elicit a biological response in vivo, handle with caution.

General Info

Function	PPases accelerate the folding of proteins. It catalyzes the cis-trans isomerization of proline imidic peptide bonds in oligopeptides.
Tissue specificity	Abundantly expressed in kidney but has a ubiquitously low expression pattern in other adult tissues.
Sequence similarities	Belongs to the cyclophilin-type PPase family. PPIL4 subfamily.
	Contains 1 PPase cyclophilin-type domain.
	Contains 1 RRM (RNA recognition motif) domain.
Cellular localization	Nucleus.

Images



SDS-PAGE - Recombinant human PPIL4 protein
(ab101207)

ab101207 (3 µg) analysed by 15% SDS PAGE.

Molecular size on SDS-PAGE will appear higher than the predicted molecular weight of 59.4 kDa.

Please note: All products are "FOR RESEARCH USE ONLY. NOT FOR USE IN DIAGNOSTIC PROCEDURES"

Our Abpromise to you: Quality guaranteed and expert technical support

- Replacement or refund for products not performing as stated on the datasheet
- Valid for 12 months from date of delivery
- Response to your inquiry within 24 hours
- We provide support in Chinese, English, French, German, Japanese and Spanish
- Extensive multi-media technical resources to help you
- We investigate all quality concerns to ensure our products perform to the highest standards

If the product does not perform as described on this datasheet, we will offer a refund or replacement. For full details of the Abpromise, please visit <https://www.abcam.com/abpromise> or contact our technical team.

Terms and conditions

- Guarantee only valid for products bought direct from Abcam or one of our authorized distributors