

Product datasheet

Recombinant human PPP1A/PPP1CA protein ab128559

[5 Images](#)

Description

Product name	Recombinant human PPP1A/PPP1CA protein
Biological activity	The specific activity of ab128559 was determined to be 228 nmol/min/mg.
Purity	> 75 % Densitometry. Affinity purified.
Expression system	Baculovirus infected Sf9 cells
Accession	<u>P62136</u>
Protein length	Full length protein
Animal free	No
Nature	Recombinant
Species	Human
Predicted molecular weight	62 kDa including tags
Amino acids	1 to 330

Specifications

Our **Abpromise guarantee** covers the use of **ab128559** in the following tested applications.

The application notes include recommended starting dilutions; optimal dilutions/concentrations should be determined by the end user.

Applications	Western blot Phosphatase Activity
Form	Liquid
Additional notes	This product was previously labelled as PPP1A

Preparation and Storage

Stability and Storage	Shipped on dry ice. Upon delivery aliquot and store at -80°C. Avoid freeze / thaw cycles. pH: 7.50 Constituents: 0.31% Glutathione, 0.002% PMSF, 0.005% DTT, 0.79% Tris HCl, 0.003% EDTA, 0.88% Sodium chloride This product is an active protein and may elicit a biological response in vivo, handle with caution.
------------------------------	---

General Info

Function

Protein phosphatase 1 (PP1) is essential for cell division, and participates in the regulation of glycogen metabolism, muscle contractility and protein synthesis. Involved in regulation of ionic conductances and long-term synaptic plasticity. May play an important role in dephosphorylating substrates such as the postsynaptic density-associated Ca^{2+} /calmodulin dependent protein kinase II. Component of the PTW/PP1 phosphatase complex, which plays a role in the control of chromatin structure and cell cycle progression during the transition from mitosis into interphase.

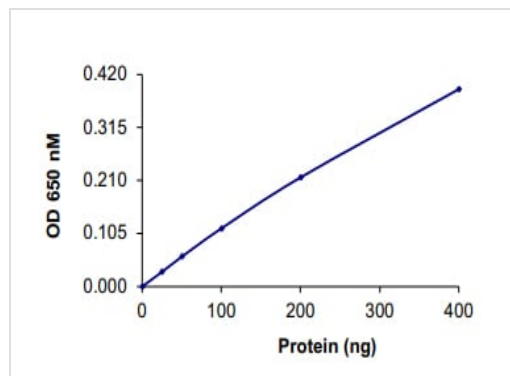
Sequence similarities

Belongs to the PPP phosphatase family. PP-1 subfamily.

Cellular localization

Cytoplasm. Nucleus. Nucleus > nucleoplasm. Nucleus > nucleolus. Primarily nuclear and largely excluded from the nucleolus. Highly mobile in cells and can be relocalized through interaction with targeting subunits. NOM1 plays a role in targeting this protein to the nucleolus. In the presence of PPP1R8 relocalizes from the nucleus to nuclear speckles.

Images



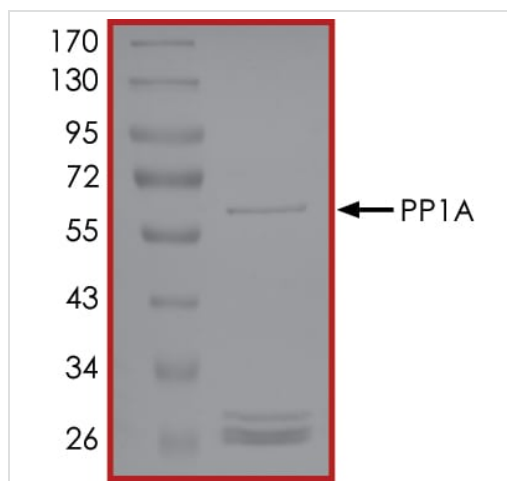
Functional Studies - Recombinant human
PPP1A/PPP1CA protein (ab128559)

The specific activity of PPP1A/PPP1CA (ab128559) was determined to be 250 nmol/min/mg as per activity assay protocol



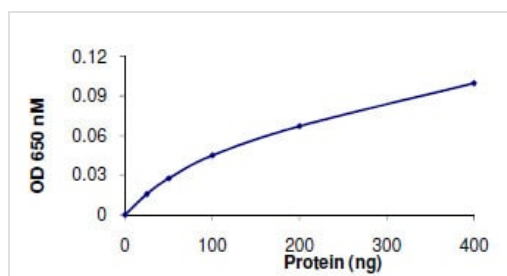
SDS-PAGE - Recombinant human PPP1A/PPP1CA
protein (ab128559)

SDS PAGE analysis of ab128559



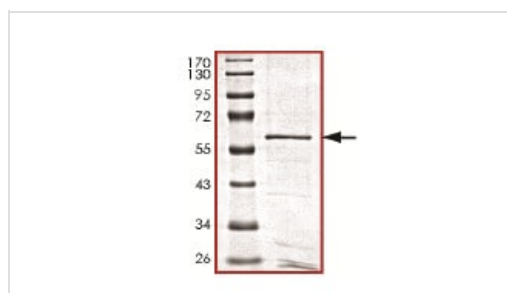
SDS PAGE analysis of ab128559

SDS-PAGE - Recombinant human PPP1A/PPP1CA protein (ab128559)



The specific activity of ab128559 was determined to be 228 nmol/min/mg.

Phosphatase Activity - Recombinant human PPP1A/PPP1CA protein (ab128559)



SDS-PAGE showing ab128559 at approximately 62 kDa.

SDS-PAGE - Recombinant human PPP1A/PPP1CA protein (ab128559)

Please note: All products are "FOR RESEARCH USE ONLY. NOT FOR USE IN DIAGNOSTIC PROCEDURES"

Our Abpromise to you: Quality guaranteed and expert technical support

- Replacement or refund for products not performing as stated on the datasheet
- Valid for 12 months from date of delivery
- Response to your inquiry within 24 hours

- We provide support in Chinese, English, French, German, Japanese and Spanish
- Extensive multi-media technical resources to help you
- We investigate all quality concerns to ensure our products perform to the highest standards

If the product does not perform as described on this datasheet, we will offer a refund or replacement. For full details of the Abpromise, please visit <https://www.abcam.com/abpromise> or contact our technical team.

Terms and conditions

- Guarantee only valid for products bought direct from Abcam or one of our authorized distributors