

Recombinant Human PPP2R1A protein ab207146

1 Image

Description

Product name	Recombinant Human PPP2R1A protein
Purity	> 90 % SDS-PAGE. ab207146 was purified using conventional chromatography techniques.
Expression system	Escherichia coli
Accession	<u>P30153</u>
Protein length	Full length protein
Animal free	No
Nature	Recombinant
Species	Human
Sequence	<p>MGSSHHHHHHSSGLVPRGSHMGSMMAAADGDDSLYPIAV LIDELRNEDVQL RLNSIKKLSIALALGVERTRSELLPFLTDITYDEDEVLLALA EQLGTFT TLVGGPEYVHCLLPPLSLATVEETVVRDKAVESLRAISH EHSPSDLEAH FVPLVKRLAGGDWFTSRTSACGLFSVCYPRVSSAVKAEL RQYFRNLCSDD TPMVRRAAAASKLGEFAKVELDNVKSEIIPMFSNLASDEQ DSVRLAVEA CVNIAQLLPQEDLEALVMPTLRQAAEDKSWRVRYMVADK FTELQKAVGPE ITKTDLVPAFQNLMKDCEAEVRAAASHKVKEFCENLSAD CRENVIMSQIL PCIKELVSDANQHVKSALASVIMGLSPILGKDNTIEHLLPLF LAQLKDEC PEVRLNIISNLDCVNEVIGIRQLSQSLLPAVELAEDAKWRV RLAIIEYM PLLAGQLGVEFFDEKLNSLCMAWLVDHVYAIAREAATSNLK KLVEKFGKEW AHATIIPKVLAMSGDPNYLHRMTTLFCINVLSEVCGQDITTK HMLPTVLR MAGDPVANVRFNVAKSLQKIGPILDNSTLQSEVKPILEKLT QDQDQDVKYFAQEALTVLSLA</p>
Predicted molecular weight	68 kDa including tags

Amino acids	1 to 589
Tags	His tag N-Terminus
Additional sequence information	NP_055040.

Specifications

Our **Abpromise guarantee** covers the use of **ab207146** in the following tested applications.

The application notes include recommended starting dilutions; optimal dilutions/concentrations should be determined by the end user.

Applications	SDS-PAGE
Form	Liquid

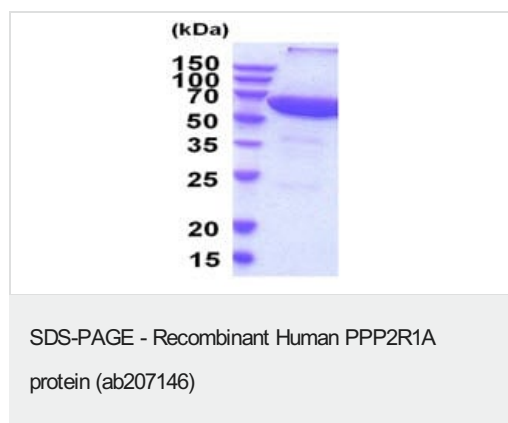
Preparation and Storage

Stability and Storage	Shipped at 4°C. Store at +4°C short term (1-2 weeks). Upon delivery aliquot. Store at -20°C or -80°C. Avoid freeze / thaw cycle. pH: 7.40 Constituents: 90% PBS, 10% Glycerol (glycerin, glycerine)
------------------------------	---

General Info

Function	The PR65 subunit of protein phosphatase 2A serves as a scaffolding molecule to coordinate the assembly of the catalytic subunit and a variable regulatory B subunit. Required for proper chromosome segregation and for centromeric localization of SGOL1 in mitosis.
Sequence similarities	Belongs to the phosphatase 2A regulatory subunit A family. Contains 15 HEAT repeats.
Domain	Each HEAT repeat appears to consist of two alpha helices joined by a hydrophilic region, the intrarepeat loop. The repeat units may be arranged laterally to form a rod-like structure.
Cellular localization	Cytoplasm. Chromosome > centromere. Centromeric localization requires the presence of BUB1.

Images



15% SDS-PAGE analysis of 3 µg ab207146.

Please note: All products are "FOR RESEARCH USE ONLY. NOT FOR USE IN DIAGNOSTIC PROCEDURES"

Our Abpromise to you: Quality guaranteed and expert technical support

- Replacement or refund for products not performing as stated on the datasheet
- Valid for 12 months from date of delivery
- Response to your inquiry within 24 hours

- We provide support in Chinese, English, French, German, Japanese and Spanish
- Extensive multi-media technical resources to help you
- We investigate all quality concerns to ensure our products perform to the highest standards

If the product does not perform as described on this datasheet, we will offer a refund or replacement. For full details of the Abpromise, please visit <https://www.abcam.com/abpromise> or contact our technical team.

Terms and conditions

- Guarantee only valid for products bought direct from Abcam or one of our authorized distributors