

Recombinant Human Prolactin/PRL protein ab48823

[2 Images](#)

Description

Product name	Recombinant Human Prolactin/PRL protein
Biological activity	Measured in a cell proliferation assay using Nb2-11 Rat lymphoma cells. The ED50 range ≤ 0.5ng/ml.
Purity	> 95 % SDS-PAGE. Purified by conventional chromatography, after refolding of the isolated inclusion bodies in a renaturation buffer.
Expression system	Escherichia coli
Protein length	Full length protein
Animal free	No
Nature	Recombinant
Species	Human
Sequence	M LPICPGGAA RCQVTLRDLF DRAVVLSHYI HNLSEMFSE FDKRYTHGRG FITKAINSCH TSSLATPEDK EQAQQMNQKD FLSLVLSILR SWNEPLYHLV TEVRGMQEAP EAILSKAVEI EEQTKRLLEG MELVSVQVHP ETKENEYPV WSGLPSLQMA DEESRLSAYY NLLHCLRRDS HKIDNYLKLL KCRIIHNNNC
Amino acids	29 to 227

Specifications

Our **Abpromise guarantee** covers the use of **ab48823** in the following tested applications.

The application notes include recommended starting dilutions; optimal dilutions/concentrations should be determined by the end user.

Applications	SDS-PAGE
Form	Liquid

Preparation and Storage

Stability and Storage	Shipped at 4°C. Upon delivery aliquot and store at -20°C. Avoid freeze / thaw cycles. pH: 7.40
------------------------------	---------------------------------------------------------------------------------------------------

Constituent: PBS

This product is an active protein and may elicit a biological response in vivo, handle with caution.

General Info

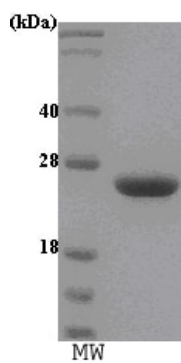
Relevance

Various hormones are secreted from the anterior pituitary during development and growth. Prolactin is a growth factor secreted by the anterior pituitary that is necessary for the proliferation and differentiation of the mammary glands.

Cellular localization

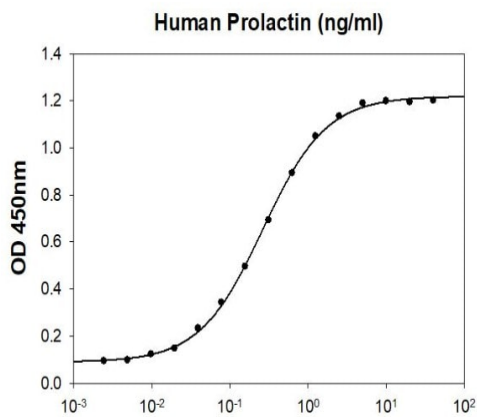
Secreted

Images



SDS-PAGE - Recombinant Human Prolactin/PRL protein (ab48823)

ab48823 run on a 15% SDS-PAGE gel with molecular weight markers (MW).



Biological Activity - Recombinant Human Prolactin/PRL protein (ab48823)

Human Prolactin in a cell proliferation assay using Nb2-11 Rat lymphoma cells. The ED50 range ≤ 0.5 ng/ml.

Please note: All products are "FOR RESEARCH USE ONLY. NOT FOR USE IN DIAGNOSTIC PROCEDURES"

Our Abpromise to you: Quality guaranteed and expert technical support

- Replacement or refund for products not performing as stated on the datasheet
- Valid for 12 months from date of delivery
- Response to your inquiry within 24 hours

- We provide support in Chinese, English, French, German, Japanese and Spanish
- Extensive multi-media technical resources to help you
- We investigate all quality concerns to ensure our products perform to the highest standards

If the product does not perform as described on this datasheet, we will offer a refund or replacement. For full details of the Abpromise, please visit <https://www.abcam.com/abpromise> or contact our technical team.

Terms and conditions

- Guarantee only valid for products bought direct from Abcam or one of our authorized distributors