

Recombinant human Prolyl Endopeptidase protein ab80376

[1 References](#) [2 Images](#)

Description

Product name	Recombinant human Prolyl Endopeptidase protein
Biological activity	Specific Activity: ≥ 12 pmol/min/ μ g. Assay condition: 50 mM Tris (pH 7.5), 100 μ g BSA, 20 μ M substrate and 500 ng Prolyl Endopeptidase protein at room temperature for 30 min.
Purity	> 90 % SDS-PAGE.
Expression system	Escherichia coli
Protein length	Full length protein
Animal free	No
Nature	Recombinant
Species	Human
Sequence	<p>MHHHHHLSLQYPDVYRDETAVQDYHGHKICDPYAWLED PDSEQTKAFVE AQNKITVPFLEQCPIRGLYKERMTELYDPKYSCHFKKGKR YFYFYNTGL QNQRVLYVQDSLEGEARVFLDPNILSDDGTVALRGYAFSE DGEYFAYGLS ASGSDWVTIKFMKVDGAKELPDVLERVKFSCMAWTHDG KGMFYNSYPQQD GKSDGTETSTNLHQKLYYHVLGTDQSEDILCAEFPDEPKW MGAELSDDG RYVLLSIREGCDPVNRLWYCDLQQESSGIAGILKWWKLIDN FEGEYDYVT NEGTVFTFKTNRQSPNYRVINIDFRDPEESKWKVLVPEHE KDVLEWIACV RSNFLVLCYLHDVKNILQLHDLTTGALLKTFPLDVGSIVGYS GQKKDTEI FYQFTSFLSPGIYHCDLTKEELEPRVFREVTVKGIDASDYQ TVQIFYPS KDGTKIPMFVHKKGIKLDGSHPAFLYGYGGFNISITPNYSV SRLIFVRH MGGILAVANIRGGGEYGETWHKGGILANKQNCFFDDFQCA AEYLIKEGYTS</p>

PKRLTINGGSNGLLVAACANQRPD LFGCVIAQVGVMDM
LKFHKYTIGHA
WTTDYGCSDSKQHFEWLVKYSPLHNVLPEADDIQYPSM
LLLTAHDHDRV
VPLHSLKFIATLQYIVGRSRKQSNPLLIHVDTKAGHGAGKP
TAKVIEEVS DMFAFIARCLNVDWIP

Predicted molecular weight 82 kDa
Amino acids 2 to 710

Specifications

Our **Abpromise guarantee** covers the use of **ab80376** in the following tested applications.

The application notes include recommended starting dilutions; optimal dilutions/concentrations should be determined by the end user.

Applications Functional Studies
SDS-PAGE

Form Liquid

Preparation and Storage

Stability and Storage Shipped on Dry Ice. Upon delivery aliquot. Store at -80°C. Avoid freeze / thaw cycle.
pH: 8.00
Constituents: 0.0462% (R*,R*)-1,4-Dimercaptobutan-2,3-diol, 0.395% Tris HCl, 0.05% Tween, 30% Glycerol (glycerin, glycerine), 0.58% Sodium chloride
This product is an active protein and may elicit a biological response in vivo, handle with caution.

General Info

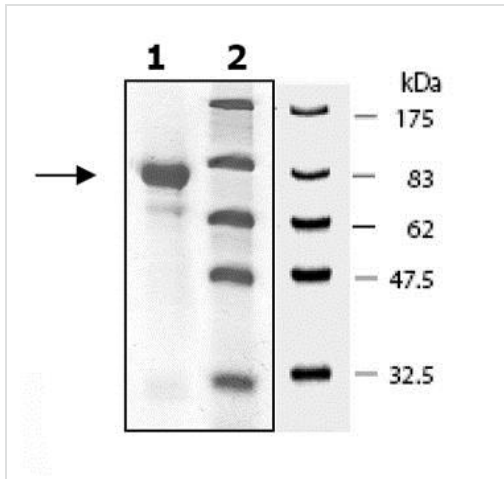
Function Cleaves peptide bonds on the C-terminal side of prolyl residues within peptides that are up to approximately 30 amino acids long.

Sequence similarities Belongs to the peptidase S9A family.

Post-translational modifications The N-terminus is blocked.

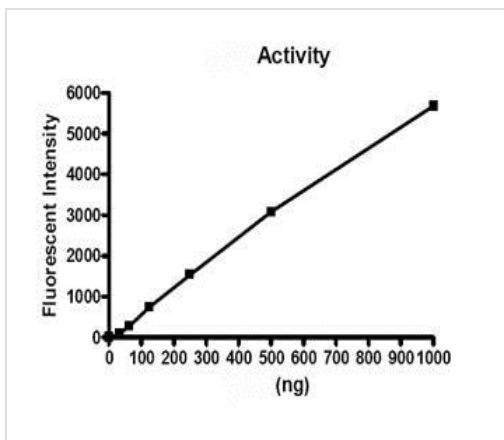
Cellular localization Cytoplasm.

Images



Lane 1: ab80376 on 10% SDS-PAGE, Coomassie staining, 4µg.
Lane 2: Protein marker.

SDS-PAGE - Recombinant human Prolyl
Endopeptidase protein (ab80376)



Functional Studies - Recombinant human Prolyl
Endopeptidase protein (ab80376)

Please note: All products are "FOR RESEARCH USE ONLY. NOT FOR USE IN DIAGNOSTIC PROCEDURES"

Our Abpromise to you: Quality guaranteed and expert technical support

- Replacement or refund for products not performing as stated on the datasheet
- Valid for 12 months from date of delivery
- Response to your inquiry within 24 hours

- We provide support in Chinese, English, French, German, Japanese and Spanish
- Extensive multi-media technical resources to help you
- We investigate all quality concerns to ensure our products perform to the highest standards

If the product does not perform as described on this datasheet, we will offer a refund or replacement. For full details of the Abpromise, please visit <https://www.abcam.com/abpromise> or contact our technical team.

Terms and conditions

- Guarantee only valid for products bought direct from Abcam or one of our authorized distributors