

Recombinant Human PRSS21/ESP1 protein ab161209

1 Image

Description

Product name	Recombinant Human PRSS21/ESP1 protein
Expression system	Wheat germ
Protein length	Full length protein
Animal free	No
Nature	Recombinant
Species	Human
Sequence	<p>MGARGALLLALLLARAGLRKPESQEAPLSGPCGRRVITS RVGGEDAEL GRWPWQGSRLWDSHVCGVSLLSHRWALTAHCFETYS DLSDPSGWMVQF GQLTSMPSFWSLQAYYTRYFVSNMYLSPRYLGNSPYDIALV KLSAPVTYT KHIQPICLQASTFEFENRTDCWVTGWGYKEDEALPSPHTL QEVQVAIIN NSMCNHLFLKYSFRKDIFGDMVCAGNAQGGKDACFGDS GGPLACNKNGLW YQIGVVSWSVGCGRPNRPGVYTNISHHFEWIKLMAQSG MSQPDPSWPLL FFPLLWALPLLGPV</p>
Amino acids	1 to 314
Tags	GST tag N-Terminus

Specifications

Our **Abpromise guarantee** covers the use of **ab161209** in the following tested applications.

The application notes include recommended starting dilutions; optimal dilutions/concentrations should be determined by the end user.

Applications	ELISA Western blot
Form	Liquid
Additional notes	This product was previously labelled as PRSS21.

Preparation and Storage

Stability and Storage

Shipped on dry ice. Upon delivery aliquot and store at -80°C. Avoid freeze / thaw cycles.

pH: 8.00

Constituents: 0.31% Glutathione, 0.79% Tris HCl

General Info

Function

Could regulate proteolytic events associated with testicular germ cell maturation.

Tissue specificity

Expressed predominantly in premeiotic testicular germ cells, mostly late pachytene and diplotene spermatocytes.

Sequence similarities

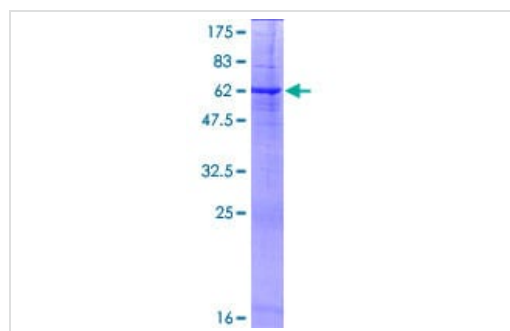
Belongs to the peptidase S1 family.

Contains 1 peptidase S1 domain.

Cellular localization

Cell membrane.

Images



ab161209 on a 12.5% SDS-PAGE stained with Coomassie Blue.

SDS-PAGE - Recombinant Human PRSS21/ESP1
protein (ab161209)

Please note: All products are "FOR RESEARCH USE ONLY. NOT FOR USE IN DIAGNOSTIC PROCEDURES"

Our Abpromise to you: Quality guaranteed and expert technical support

- Replacement or refund for products not performing as stated on the datasheet
- Valid for 12 months from date of delivery
- Response to your inquiry within 24 hours
- We provide support in Chinese, English, French, German, Japanese and Spanish
- Extensive multi-media technical resources to help you
- We investigate all quality concerns to ensure our products perform to the highest standards

If the product does not perform as described on this datasheet, we will offer a refund or replacement. For full details of the Abpromise, please visit <https://www.abcam.com/abpromise> or contact our technical team.

Terms and conditions

- Guarantee only valid for products bought direct from Abcam or one of our authorized distributors