

Product datasheet

Recombinant Human PTGES2/Gbfl protein ab107954

1 Image

Description

Product name	Recombinant Human PTGES2/Gbfl protein
Purity	> 95 % SDS-PAGE. ab107954 was purified by using conventional chromatography techniques.
Expression system	Escherichia coli
Accession	<u>A6NHH0</u>
Protein length	Full length protein
Animal free	No
Nature	Recombinant
Species	Human
Sequence	MGSSHHHHHHSSGLVPRGSHMKAVNEQGKEVTEFGNK YWLMLNEKEAQQV YGGKEARTEEMKWRQWADDWLVLISPNVYRTPTEALAS FDYVREGKFG AVEGAVAKYMGAAAMYLISKRLKSRHRLQDNVREDLYEA ADKWVAAVGKD RPFMGGQKPNLADLAVYGVLRVMEGLDAFDDLMQHTHIQ PWYLRVERAIT EASPAH
Predicted molecular weight	24 kDa including tags
Amino acids	1 to 206
Tags	His tag N-Terminus

Specifications

Our **Abpromise guarantee** covers the use of **ab107954** in the following tested applications.

The application notes include recommended starting dilutions; optimal dilutions/concentrations should be determined by the end user.

Applications	Mass Spectrometry SDS-PAGE
Mass spectrometry	MALDI-TOF
Form	Liquid
Additional notes	This product was previously labelled as PTGES2

Preparation and Storage

Stability and Storage

Shipped at 4°C. Store at +4°C short term (1-2 weeks). Upon delivery aliquot. Store at -20°C or -80°C. Avoid freeze / thaw cycle.

pH: 8.00

Constituents: 0.0308% DTT, 0.316% Tris HCl, 20% Glycerol (glycerin, glycerine), 1.16% Sodium chloride

General Info

Function

Isomerase that catalyzes the conversion of unstable intermediate of prostaglandin E2 H2 (PGH2) into the more stable prostaglandin E2 (PGE2) form. May also have transactivation activity toward IFN-gamma (IFNG), possibly via an interaction with CEBPB; however, the relevance of transcription activation activity remains unclear.

Tissue specificity

Widely expressed. Expressed in the heart, including apex, inter-ventricular septum, both atria and ventricles, but not in the aorta. Also expressed in fetal heart. Detected in various regions of the brain: cerebellum; occipital, frontal and parietal lobes. Also expressed in the lymph nodes, skeletal muscle, kidney and trachea, but not in the thymus or lung. Overexpressed in colorectal cancer.

Pathway

Lipid metabolism; prostaglandin biosynthesis.

Sequence similarities

Belongs to the GST superfamily.

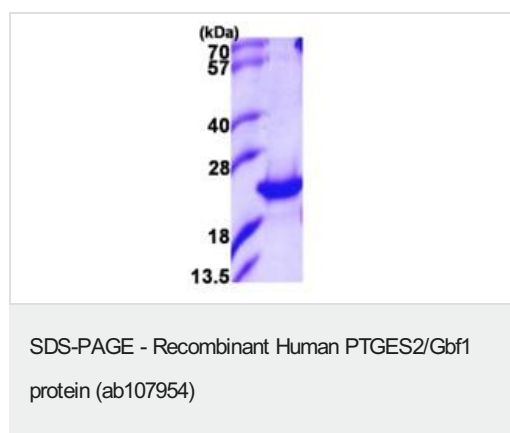
Contains 1 glutaredoxin domain.

Contains 1 GST C-terminal domain.

Cellular localization

Golgi apparatus membrane and Cytoplasm > perinuclear region. Synthesized as a Golgi membrane-bound protein, which is further cleaved into the predominant soluble truncated form. The truncated form is cytoplasmic and is enriched in the perinuclear region.

Images



15% SDS-PAGE analysis of ab107954 (3 µg).

Please note: All products are "FOR RESEARCH USE ONLY. NOT FOR USE IN DIAGNOSTIC PROCEDURES"

Our Abpromise to you: Quality guaranteed and expert technical support

- Replacement or refund for products not performing as stated on the datasheet
- Valid for 12 months from date of delivery
- Response to your inquiry within 24 hours

- We provide support in Chinese, English, French, German, Japanese and Spanish
- Extensive multi-media technical resources to help you
- We investigate all quality concerns to ensure our products perform to the highest standards

If the product does not perform as described on this datasheet, we will offer a refund or replacement. For full details of the Abpromise, please visit <https://www.abcam.com/abpromise> or contact our technical team.

Terms and conditions

- Guarantee only valid for products bought direct from Abcam or one of our authorized distributors