

Product datasheet

Recombinant Human PYM protein ab172179

1 Image

Description

Product name	Recombinant Human PYM protein	
Purity	> 95 % SDS-PAGE. Greater than 95% as determined by SEC-HPLC and reducing SDS-PAGE.	
Endotoxin level	= 1.000 Eu/μg	
Expression system	Escherichia coli	
Accession	<u>Q9BRP8</u>	
Protein length	Full length protein	
Animal free	No	
Nature	Recombinant	
Species	Human	
Sequence	MEAAGSPAATETGKYIASTQRPDGTWRKQRRVKEGYVPQ EEVPVYENKYV KFFKSKPELPPGLSP EATAPVTPSRPEGGEPGLSKTAKRNLKRKEKRRQQQEK GEAEALSRTLDK VSLEETAQLPSAPQG SRAAPTAASDQPDSAATTEKAKKIKNLKKLRQVEELQQ RIQAGEVSQPS KEQLEKLARRALEE ELEDLELGLLEHHHHHH	
Predicted molecular weight	24 kDa including tags	
Amino acids	1 to 204	
Tags	His tag C-Terminus	

Specifications

Our **Abpromise guarantee** covers the use of **ab172179** in the following tested applications.

The application notes include recommended starting dilutions; optimal dilutions/concentrations should be determined by the end user.

Applications	SDS-PAGE HPLC
Form	Liquid
Additional notes	Previously labelled as WIBG.

Preparation and Storage

Preparation and Storage

Stability and Storage

Shipped on Dry Ice. Store at -20°C or -80°C. Avoid freeze / thaw cycle.

pH: 8.00

Constituents: 0.32% Tris HCl, 0.58% Sodium chloride, 10% Glycerol (glycerin, glycerine)

Supplied as a 0.2µM filtered solution.

General Info

Function

Key regulator of the exon junction complex (EJC), a multiprotein complex that associates immediately upstream of the exon-exon junction on mRNAs and serves as a positional landmark for the intron exon structure of genes and directs post-transcriptional processes in the cytoplasm such as mRNA export, nonsense-mediated mRNA decay (NMD) or translation. Acts as a EJC disassembly factor, allowing translation-dependent EJC removal and recycling by disrupting mature EJC from spliced mRNAs. Its association with the 40S ribosomal subunit probably prevents a translation-independent disassembly of the EJC from spliced mRNAs, by restricting its activity to mRNAs that have been translated. Interferes with NMD and enhances translation of spliced mRNAs, probably by antagonizing EJC functions. May bind RNA; the relevance of RNA-binding remains unclear in vivo, RNA-binding was detected by PubMed:14968132, while PubMed:19410547 did not detect RNA-binding activity independently of the EJC.

Sequence similarities

Belongs to the pym family.

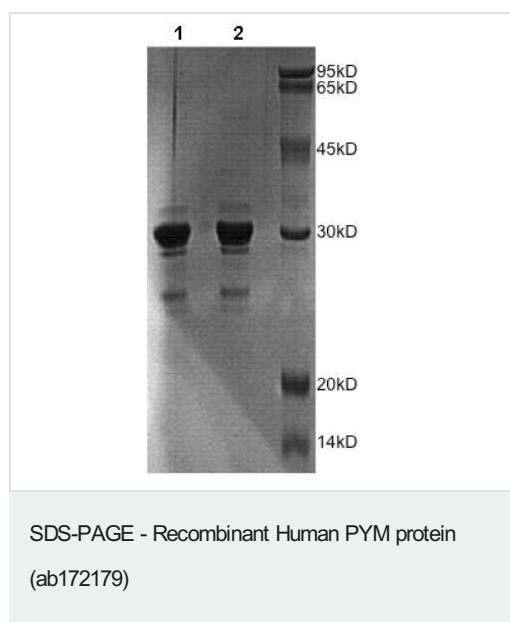
Domain

The eIF2A-like region shares sequence similarity with eIF2A and mediates the interaction with the 40S ribosomal subunit and the 48S preinitiation complex.

Cellular localization

Cytoplasm. Nucleus, nucleolus. Nucleus, nucleoplasm. Shuttles between the nucleus and the cytoplasm (PubMed:14968132). Nuclear export is mediated by XPO1/CRM1 (PubMed:14968132).

Images



SDS-PAGE gel of ab172179 under reduced (lane 1) and non-reduced (lane 2) conditions.

Our Abpromise to you: Quality guaranteed and expert technical support

- Replacement or refund for products not performing as stated on the datasheet
- Valid for 12 months from date of delivery
- Response to your inquiry within 24 hours

- We provide support in Chinese, English, French, German, Japanese and Spanish
- Extensive multi-media technical resources to help you
- We investigate all quality concerns to ensure our products perform to the highest standards

If the product does not perform as described on this datasheet, we will offer a refund or replacement. For full details of the Abpromise, please visit <https://www.abcam.com/abpromise> or contact our technical team.

Terms and conditions

- Guarantee only valid for products bought direct from Abcam or one of our authorized distributors