

Recombinant Human Rad1 protein ab97946

1 Image

Description

Product name	Recombinant Human Rad1 protein
Purity	> 85 % SDS-PAGE. ab97946 is purified using conventional chromatography techniques.
Expression system	Escherichia coli
Accession	<u>O60671</u>
Protein length	Full length protein
Animal free	No
Nature	Recombinant
Species	Human
Sequence	<b>MGSSHHHHHHSSGLVPRGSH</b> MPLLTQQIQDEDDQYSLV ASLDNVRNLSTI LKAIHFREHATCFATKNGIKVTVENAKCVQANAFIQAGIFQE FKVQEEESV TFRINLTVLLDCLSIFGSSPMPGTLALRMCYQGYGYPLML FLEEGGVVT VCKINTQEPEETLDFDFCSTNVINKIILQSEGLREAFSELD M TSEVLQIT MSPDKPYFRLSTFGNAGSSHLDPKDSDLMEAFHCNQ TQ VNRYKISLLKP STKALVLSCKVSIRTDNRGFLSLQYMIRNEDGQICFVEYYC CPDEEVPES ES
Predicted molecular weight	34 kDa including tags
Amino acids	1 to 282
Tags	His tag N-Terminus

Specifications

Our <b>Abpromise guarantee</b> covers the use of <b>ab97946</b> in the following tested applications.	
The application notes include recommended starting dilutions; optimal dilutions/concentrations should be determined by the end user.	
Applications	Mass Spectrometry SDS-PAGE
Form	Liquid

## Preparation and Storage

### Stability and Storage

Shipped at 4°C. Upon delivery aliquot and store at -20°C or -80°C. Avoid repeated freeze / thaw cycles.

pH: 8.00

Constituents: 0.0154% DTT, 0.316% Tris HCl, 10% Glycerol (glycerin, glycerine), 1.16% Sodium chloride

## General Info

### Function

Component of the 9-1-1 cell-cycle checkpoint response complex that plays a major role in DNA repair. The 9-1-1 complex is recruited to DNA lesion upon damage by the RAD17-replication factor C (RFC) clamp loader complex. Acts then as a sliding clamp platform on DNA for several proteins involved in long-patch base excision repair (LP-BER). The 9-1-1 complex stimulates DNA polymerase beta (POLB) activity by increasing its affinity for the 3'-OH end of the primer-template and stabilizes POLB to those sites where LP-BER proceeds; endonuclease FEN1 cleavage activity on substrates with double, nick, or gap flaps of distinct sequences and lengths; and DNA ligase I (LIG1) on long-patch base excision repair substrates. Isoform 1 possesses 3'->5' double stranded DNA exonuclease activity.

### Tissue specificity

Expressed in testis, uterus, bladder, spleen, ovaries, lung, brain and muscle (at protein level).

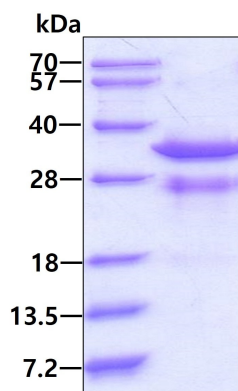
### Sequence similarities

Belongs to the rad1 family.

### Cellular localization

Nucleus.

## Images



15% SDS-PAGE showing ab97946 at approximately 33.9kDa (3µg).

SDS-PAGE - Recombinant Human Rad1 protein  
(ab97946)

**Please note:** All products are "FOR RESEARCH USE ONLY. NOT FOR USE IN DIAGNOSTIC PROCEDURES"

### **Our Abpromise to you: Quality guaranteed and expert technical support**

---

- Replacement or refund for products not performing as stated on the datasheet
- Valid for 12 months from date of delivery
- Response to your inquiry within 24 hours
  
- We provide support in Chinese, English, French, German, Japanese and Spanish
- Extensive multi-media technical resources to help you
- We investigate all quality concerns to ensure our products perform to the highest standards

If the product does not perform as described on this datasheet, we will offer a refund or replacement. For full details of the Abpromise, please visit <https://www.abcam.com/abpromise> or contact our technical team.

### **Terms and conditions**

---

- Guarantee only valid for products bought direct from Abcam or one of our authorized distributors