

Product datasheet

Recombinant Human Rag A protein ab161103

1 Image

Description

Product name	Recombinant Human Rag A protein
Expression system	Wheat germ
Protein length	Full length protein
Animal free	No
Nature	Recombinant
Species	Human
Sequence	MPNTAMKKKVLMLMGKSGSGKTSMRSIIFANYARDTRRLGA TIDVEHSHV RFLGNLVLNLWDCGGQDTFMENYFTSQRDNIFRNVEVLIY VFDVESRELE KDMHYQSCLEAILQNSPDAKIFCLVHKMDLVQEDQRDLI FKEREEDLRR LSRPLECACFRTSIWDETLTKAWSSIVYQLIPNVQQLEMNL RNFAQIIEA DEVLLFERATFLVISHYQCQEQRDVHRFEKISNIIKQFKLSC SKLAASFQ SMEVRNSNFAAFIDIFTSNTYVMVMSDPSIPSAATLINIRN ARKHFEKL ERVDGPKHSLLMR
Amino acids	1 to 313
Tags	GST tag N-Terminus

Specifications

Our **Abpromise guarantee** covers the use of **ab161103** in the following tested applications.

The application notes include recommended starting dilutions; optimal dilutions/concentrations should be determined by the end user.

Applications	Western blot ELISA
Form	Liquid
Additional notes	This product was previously labelled as RRAGA.

Preparation and Storage

Stability and Storage

Shipped on dry ice. Upon delivery aliquot and store at -80°C. Avoid freeze / thaw cycles.

pH: 8.00

Constituents: 0.31% Glutathione, 0.79% Tris HCl

General Info

Function

Has guanine nucleotide-binding activity but undetectable intrinsic GTPase activity. Required for the amino acid-induced relocalization of mTORC1 to the lysosomes and its subsequent activation by the GTPase RHEB. This is a crucial step in the activation of the TOR signaling cascade by amino acids. Involved in the RCC1/Ran-GTPase pathway. May play a direct role in a TNF-alpha signaling pathway leading to induction of cell death. May alternatively act as a cellular target for adenovirus E3-14.7K, an inhibitor of TNF-alpha functions, thereby affecting cell death.

Tissue specificity

Ubiquitously expressed with highest levels of expression in skeletal muscle, heart, and brain.

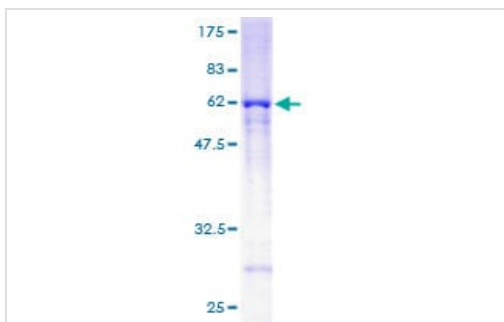
Sequence similarities

Belongs to the GTR/RAG GTP-binding protein family.

Cellular localization

Cytoplasm. Nucleus. Lysosome. Predominantly cytoplasmic. May shuttle between the cytoplasm and nucleus, depending on the bound nucleotide state. Colocalizes in vivo with adenovirus E3-14.7K mainly to the cytoplasm especially near the nuclear membrane and in discrete foci on or near the plasma membrane.

Images



SDS-PAGE - Recombinant Human Rag A protein
(ab161103)

ab161103 on a 12.5% SDS-PAGE stained with Coomassie Blue.

Please note: All products are "FOR RESEARCH USE ONLY. NOT FOR USE IN DIAGNOSTIC PROCEDURES"

Our Abpromise to you: Quality guaranteed and expert technical support

- Replacement or refund for products not performing as stated on the datasheet
- Valid for 12 months from date of delivery
- Response to your inquiry within 24 hours
- We provide support in Chinese, English, French, German, Japanese and Spanish
- Extensive multi-media technical resources to help you

- We investigate all quality concerns to ensure our products perform to the highest standards

If the product does not perform as described on this datasheet, we will offer a refund or replacement. For full details of the Abpromise, please visit <https://www.abcam.com/abpromise> or contact our technical team.

Terms and conditions

- Guarantee only valid for products bought direct from Abcam or one of our authorized distributors