

Product datasheet

Recombinant Human RCN1/RCN protein ab98241

1 Image

Description

Product name	Recombinant Human RCN1/RCN protein
Purity	>= 80 % SDS-PAGE. Purity > 80% by SDS-PAGE. ab98241 was purified using conventional chromatography techniques
Expression system	Escherichia coli
Accession	<u>Q15293</u>
Protein length	Full length protein
Animal free	No
Nature	Recombinant
Species	Human
Sequence	MRGSHHHHHHGMASMTGGQQMGRDLYDDDDKDRWG SELEKPTVRKERVVR PDSELGERPPEDNQSFDHEAFLGKEDSKTFDQLTPDE SKERLGKIMDR IDNDGDGFVTTEELKTWIKRVQKRYFDNVAKVWKDYDRD KDDKISWEEY KQATYGYLGNPAEFHDSSDHHTFKKMLPRDERRFKAAD LNGDLTATREE FTAFLHPEEFEHMKEIVLETLEDIDKNGDGFVDQDEYAD MFSHEENGP EPDWVLSEREQFNEFRDLNKGKLDKDEIRHWILPQDYD HAQAEARHLVY ESDKNKDEKLTKEEILENWNMFVGSQATNYGEDLTKNHD EL
Predicted molecular weight	40 kDa including tags
Amino acids	30 to 331
Tags	His tag N-Terminus

Specifications

Our **Abpromise guarantee** covers the use of **ab98241** in the following tested applications.

The application notes include recommended starting dilutions; optimal dilutions/concentrations should be determined by the end user.

Applications	SDS-PAGE Mass Spectrometry
Mass spectrometry	MALDI-TOF
Form	Liquid
Additional notes	This product was previously labelled as RCN1

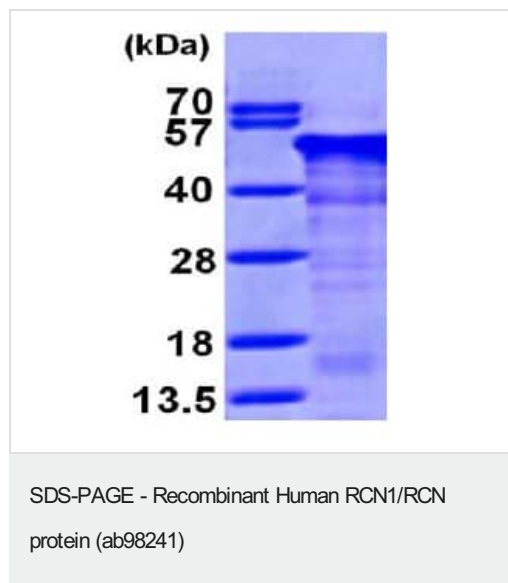
Preparation and Storage

Stability and Storage	Shipped at 4°C. Store at +4°C short term (1-2 weeks). Upon delivery aliquot. Store at -20°C or -80°C. Avoid freeze / thaw cycle. pH: 8.00 Constituents: 0.0154% DTT, 0.316% Tris HCl, 10% Glycerol (glycerin, glycerine), 0.58% Sodium chloride
------------------------------	---

General Info

Function	May regulate calcium-dependent activities in the endoplasmic reticulum lumen or post-ER compartment.
Sequence similarities	Belongs to the CREC family. Contains 6 EF-hand domains.
Cellular localization	Endoplasmic reticulum lumen.

Images



15% SDS-PAGE analysis of 3µg ab98241

Please note: All products are "FOR RESEARCH USE ONLY. NOT FOR USE IN DIAGNOSTIC PROCEDURES"

Our Abpromise to you: Quality guaranteed and expert technical support

- Replacement or refund for products not performing as stated on the datasheet
- Valid for 12 months from date of delivery
- Response to your inquiry within 24 hours

- We provide support in Chinese, English, French, German, Japanese and Spanish
- Extensive multi-media technical resources to help you
- We investigate all quality concerns to ensure our products perform to the highest standards

If the product does not perform as described on this datasheet, we will offer a refund or replacement. For full details of the Abpromise, please visit <https://www.abcam.com/abpromise> or contact our technical team.

Terms and conditions

- Guarantee only valid for products bought direct from Abcam or one of our authorized distributors